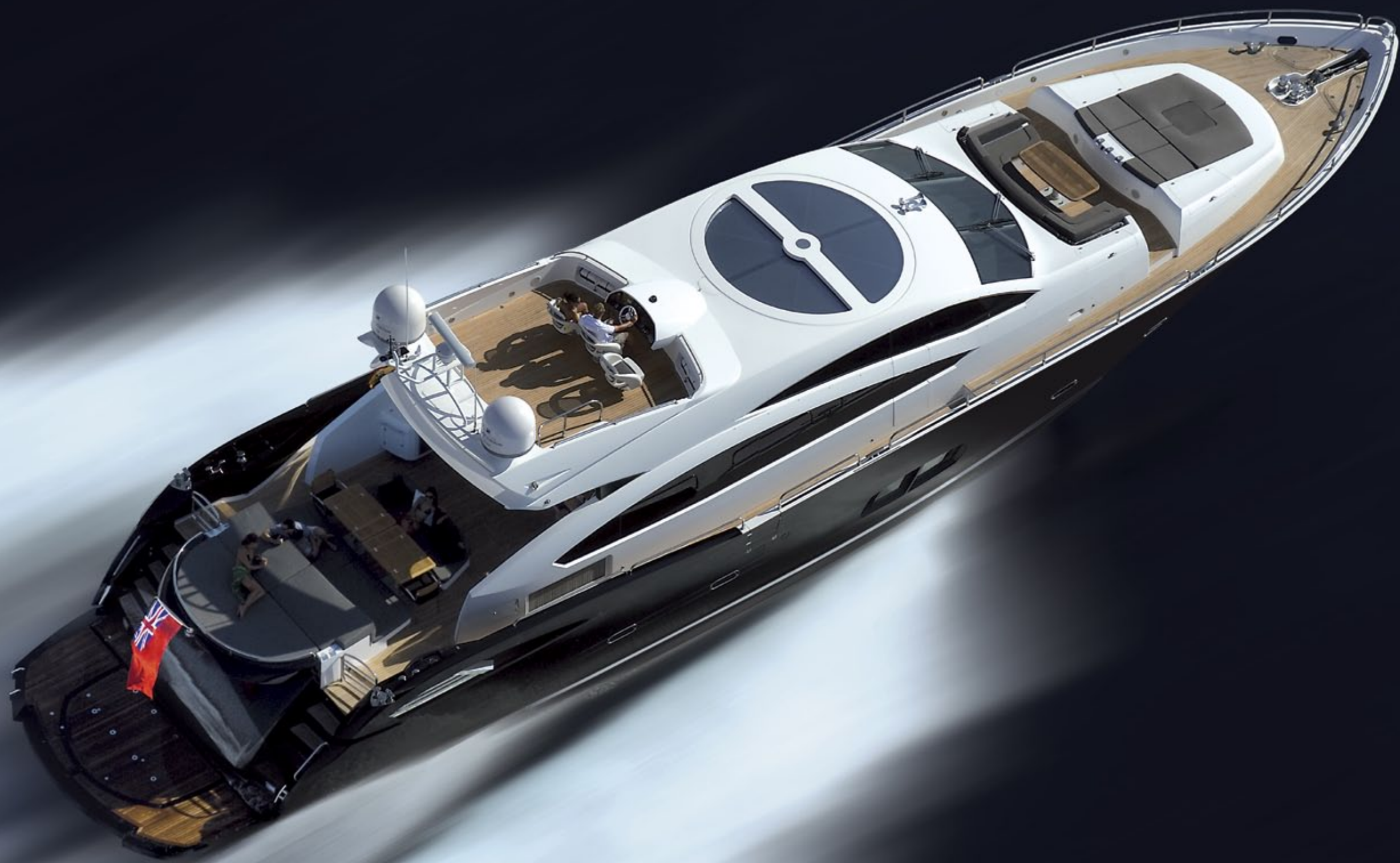
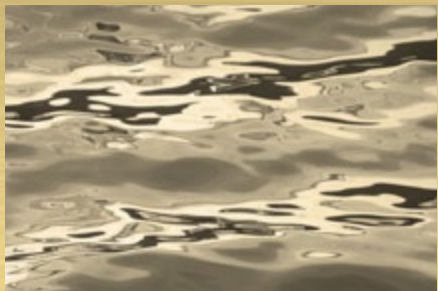


PREDATOR 92 SPORT







PREDATOR 92 SPORT

PERFORMANCE MOTORYACHT

Style: Performance motoryacht

Accommodation: Up to 8 guests and 4 crew members

Tender and toys: Platform and garaged

Drives: Surface drives / Shafts

Performance: Up to 42 knots

This, the Predator 92 Sport, is perhaps the Predator that most clearly sets the pace, with its sleek sports flybridge streamlined into a powerful athletic profile that simply screams performance. And this she achieves with the line's race bred heritage and sea friendly handling whether sporting the race style Arneson drives and 5850 PS for 42 knots, or Sunseeker's own unique take on tunnels and conventional shafts and 5300 PS for more economic speeds.

Either way, a thrilling ride but with that Sunseeker extra that so few other constructors achieve, the inclusion of first class comforts, not just in styling but in actual fabrication, fit and furnishing with practical, welcoming interiors designed for living not just visiting.

Inside she's clearly a big boat with vast saloon running through on a single level to race style helm station with guest accommodation below. The galley and crew quarters are accessed from an aft stairway within the saloon.

SPECIFICATIONS

PREDATOR 92 SPORT

STANDARD SPECIFICATION

1 Construction

Gel coat including stripes
Vinylester skin coat with powder bound mat
Stitched multi axial single skin hull bottom
Balsa and PVC foam cored hull topsides skinned with stitched multi axials
PVC foam cored deck
Longitudinally stiffened with foam formers over laminated with stitched multi axials
Transversely stiffened with GRP ringframes, marine ply and sandwich bulkheads
Superstructure PVC foam cored and skinned with stitched multi axials
Superstructure stiffened with foam formers over laminated with stitched multi axials

2 Deck

Fittings all in 316 stainless steel and chromed bronze
Pair stainless steel bow cleats and fairleads
Two pairs of stainless steel spring cleats with chafing bars
Pair stainless steel stern cleats and fairleads
Stainless steel pulpit and cockpit rails
Stainless steel bow roller with anchor stop and devil's claw
Stainless steel bow plate
Single electric windlass (Lewmar V8) 24v, starboard side, foredeck control only
Single electric capstan (Lewmar V8) 24v, port side, foredeck control only
Anchor 80kg claw-type (galvanised)
Anchor chain 100 metres/328 feet (12mm diameter, galvanised)
Automatic fresh water chain wash
Fresh water deckwash with outlets forward and aft
Chain locker and fender stowage
Curved direct glazed safety glass windscreen
Pantograph windscreen wipers and washers
Fuel filler on port and starboard sides
Fresh-water filler
IMCO navigation lights
Remote controlled spotlight at bow
Low-level courtesy lights on side decks 24v
Bow seat and sunbathing pad
Built in U shaped seating area foredeck
Table for U shaped seating area at foredeck
Skylight from VIP stateroom
Teak-laid sidedecks

3 Aft cockpit

Teak-laid self draining cockpit floor
Stairs to flybridge on starboard side with teak treads
Aft bench seating
Aft facing bench seat
2 x teak tables with folding leaves on manual adjustable bases
Aft sunpad
Wetbar on port side with sink
Refrigerator in wetbar
Icemaker in wetbar
Chilled coolbox in wetbar
Electric ceramic griddle AC in wetbar
Stainless steel stern safety gates
Engine room access hatch
2 x stern capstan winches (Lewmar C4) 24v and fairleads
Overhead cockpit lights 24v
Low-level courtesy lights 24v
Pair marine speakers connected to deck saloon
AV system with Bose PMCI remote
Ensign staff and socket
Battery switches in locker
Fire extinguisher in locker
Sliding patio doors leading to deck saloon

4 Bathing platform and stern garage

Hydraulic bathing platform (650 kg maximum capacity)
Stairs to aft cockpit with teak treads
Fold out stainless steel swimming ladder
Hot and cold hand-held swimming shower
Fresh water marina connection
Telephone marina connection
Dockside AC connection 1 X 100 amp Glendinning
Cablemaster
Hydraulically opening garage door with access to stern garage
Lights inside garage
2 x winches and recovery systems
Euro spec only: Hydraulic telescopic gangway

5 Flybridge deck

Stairs leading from aft cockpit
Self draining cockpit with non slip finish
Stainless steel aft safety rails
Low-level flybridge lighting 24v
Pair of marine speakers connected to CD radio in deck saloon
Deckwash outlet
Radar arch structure

6 Flybridge helm position

3 x Individual helm seats
Hydraulic steering
Duplicate engine throttle controls
Combined depth and speed display (Raymarine ST60+ Tridata)
VHF radio handset (Raymarine RAY240 DSC dual-station VHF)
Autopilot (Raymarine ST6002)
Magnetic compass
Rudder indicator
Trim tab control
Horn control
Radio CD waterproof remote keypad
Waterproof plug and socket 12v

7 Boat covers

Windscreen sun screen
Flybridge instrument cover

8 Deck saloon

Sofa seating area
Coffee table
2 x side tables in seating area
Bar peninsular unit
Flatscreen television on rise and fall (40")
DVD/CD/radio surround sound entertainment system (Bose 28)
iPod docking station connected to AV system
Control head for flybridge CD/radio system
Air-conditioning
Side windows with blinds
Drinks cabinet with glassware storage for eight (8 x champagne, 8 x whisky, 1 x decanter)
Stainless steel framed sliding patio door to aft cockpit with curtains and tie back
Halogen overhead lighting 24v
Double AC sockets
Telephone point
Table lamp
Dining table
Eight free-standing dining chairs
Sensor connected to fire detection system
Fitted carpet
Skylights in forward overhead area
Side opening door to port side deck
Side opening door to starboard side deck
Staircase aft leading to crew quarters
Staircase forward leading to accommodation area

9 Lower helm position

Three helm seats
Chart stowage area
Double AC sockets
Telephone points x 2
Console with dash panels
Hydraulic power steering
Carbon fibre effect steering wheel
Radar/Chartplotter with GPS (2 x Raymarine E120W colour displays)
Autopilot (Raymarine ST6002)
Depth and speed displays (Raymarine ST60+ Tridata)
VHF radio handset (Raymarine RAY240 DSC dual-station VHF)
Magnetic compass
Horn control
Monitoring panel including generators control
Monitoring panel for fire detection system
Trim tab controls
Rudder indicator
Analogue engine instrumentation
Fresh water gauge
Fuel gauge
12v socket
Remote spotlight control
Windscreen wipers with washers
Screen demister
Fire extinguisher

10 Lower deck lobby

Staircase leading from deck saloon
Halogen overhead lighting 24v
AC socket
Bilge access hatches
Doors to guest cabins
Fitted carpet
Sensor connected to fire detection system
Feature downlighting
Feature corner glass

11 Forward VIP stateroom

Double berth
Foam mattress for berth
Drawers in berth
Bedside lights
Dressing table
Stool for dressing table
Air-conditioning
Flatscreen television (40")
DVD/CD player with speakers
Halogen overhead lighting 24v
Fixed portlights
Skylight with blind
Double AC sockets
Telephone point x 2 (port bedside and dressing table)
Fitted carpet
Sensor connected to fire detection system
Doors to en suite and lobby

12 Forward VIP en suite

Tecma toilet 24v
Vanity top and flooring
Washbasin
Taps and accessories (toothbrush and glass holder, soap dispenser, towel rails and towels)
Hot and cold water
Separate shower compartment
Acrylic shower door
Air-conditioning outlet
Extractor fan
Mirror
Shelved cupboard
Halogen overhead lighting 24v
Opening porthole with mosquito screen and venetian blind
Shaver socket 240/110v
Door to stateroom

13 Port guest cabin

Two single berths
Foam mattresses for berths
Stowage under berths
Bedside lights
Bedside unit with storage
Wardrobe
Air conditioning
Halogen overhead lighting 24v
Opening portholes with mosquito screen and blind
Double AC sockets
Flatscreen television (19")
DVD/CD player with two speakers
Telephone point (beside bedside unit)
Fitted carpet
Sensor connected to fire detection system
Doors to en suite and lobby

14 Port guest en suite

Tecma toilet 24v
Vanity top and flooring
Washbasin
Taps and accessories (toothbrush and glass holder, soap dispenser, towel rails and towels)
Separate shower compartment
Acrylic shower door
Extractor fan
Air conditioning outlet
Mirror
Shelved cupboard
Halogen overhead lighting 24v
Opening porthole with mosquito screen and venetian blind
Shaver socket 240/110v
Door to guest cabin

15 Starboard guest cabin

Two single berths
Foam mattresses for berths
Stowage under berths
Bedside lights
Bedside unit with storage
Wardrobe
Air conditioning
Halogen overhead lighting 24v
Opening portholes with mosquito screen and blind
Double AC sockets
Flatscreen television (19")
DVD/CD player with two speakers
Telephone point (beside bedside unit)
Fitted carpet
Sensor connected to fire detection system
Doors to en suite and lobby

16 Starboard guest en suite

Tecma toilet 24v
Vanity top and flooring
Washbasin
Taps and accessories (toothbrush and glass holder, soap dispenser, towel rails and towels)
Separate shower compartment
Acrylic shower door
Extractor fan
Air-conditioning outlet
Mirror
Shelved cupboard
Halogen overhead lighting 24v
Opening porthole with mosquito screen and venetian blind
Shaver socket 240/110v
Door to guest cabin

17 Master aft stateroom

Double berth
Foam mattress for berth
Drawers in berth
Bedside units with storage
Bedside lights
Dressing table
Footstool for sofa/dressing table
Sofa
Air-conditioning
Halogen overhead lighting 24v
Table lamps x 2
Fixed and opening portholes (with mosquito screens) with blinds
Double AC sockets
Telephone points x 2 (dressing table and starboard bedside)
Flatscreen television (40")
DVD/CD/Radio entertainment system with two speakers and sub woofer (Bose 321)
Fitted carpet
Sensor connected to fire detection system
Doors to en suite, walk in wardrobe and lobby

18 Master walk-in wardrobe

Hanging rails
Shelves
Full-length mirror
Halogen overhead lighting 24v
Fitted carpet
Door to stateroom

19 Master en suite

Tecma toilet 24v
Bidet
Vanity top and flooring
Washbasin
Hot and cold water
Taps and accessories (toothbrush and glass holder, soap dispenser, towel rails and towels)
Separate shower compartment
Acrylic shower door
Extractor fan
Air conditioning outlet
Mirrors
Halogen overhead lighting 24v
Opening porthole with mosquito screen and venetian blind
Shaver socket 240/110v
Door to stateroom

20 Galley and crew mess

Stairs leading from deck saloon
Safety flooring
American style fridge, freezer with icemaker AC
Four ring ceramic hob AC
Hob extractor AC
Slimline dishwasher AC
Washer/dryer AC
Stainless steel sink
Tap with hot and cold water
Rubbish bin
Chinaware with stowage (8 settings)
Cutlery (8 settings)
Storage consisting of cupboards, drawers and top-box lockers
Halogen overhead lighting 24v
Lighting under top box lockers
Double AC sockets
Telephone point
Fire extinguisher
Fire blanket
First aid kit
Sensor connected to fire detection system
Sofa seating area
Table with folding leaf
Flatscreen television (19")
CD/DVD player with two speakers
Doors leading to crew cabins
Euro spec only: Microwave/oven AC
US spec only: Oven AC
US spec only: Small microwave AC

21 Aft port crew cabin

Twin bunk berths with foam mattresses
Air conditioning
Halogen overhead lighting 24v
Double AC socket
Telephone point
Bedside lights
Opening porthole with mosquito screen and curtains
Radio/CD player with two speakers
Fitted carpet
Sensor connected to fire detection system
Doors to galley/crew mess and crew en suite

22 Forward port crew cabin

Twin bunk berths with foam mattresses
Air-conditioning
Halogen overhead lighting 24v
Double AC socket
Telephone point
Bedside lights
Opening porthole with mosquito screen and curtains
Radio/CD player with two speakers
Fitted carpet
Sensor connected to fire detection system
Doors to galley/crew mess and crew en suite

23 Crew en suite

Tecma toilet 24v
Washbasin
Shower cubicle
Mirror
Vanity unit
Halogen overhead lighting 24v
Shaver socket 240/110v
Doors leading to crew cabins

24 Engine compartment and ancillaries

Soundproofing throughout
Fuel filters/water separators to engines
Fuel filters/water separators to generators
FM200 manual/automatic fire extinguishing system combined with engines, generators and fans shutdown
2 x extractor fans AC
Automatic bilge pumps combined with high level alarm
Strainers to all raw water inlets
Sensor connected to fire detection system

25 Electrical system

Euro spec only: 2 x 25kW @ 50Hz slow speed Kohler generators with underwater silent exhaust
US spec only: 2 x 28kW @ 60Hz slow speed Kohler generators with underwater silent exhaust
Dockside AC connection 1 x 100 amp Glendinning cablemaster
24v and 12v DC electrical system with full circuit breaker protection
2 x generator batteries 12v circuit
4 x domestic batteries 24v circuit
8 x engine batteries 24v circuit
Alternator split charging system
Remote battery switches controlled from locker in cockpit
95 amp battery charger for 24v circuit
20 amp battery charger for 12v circuit
2 x 2 kW immersion heaters for each calorifier
AC sockets throughout the boat
Fire detection system with monitoring panel beside lower helm

26 Underwater gear

5 blade NAB bronze propellers
Bronze (MB2) P brackets
90mm Temet 25 propeller shafts
Self aligning shaft seal with spare seal
High performance bronze rudders and struts
Seacocks on all underwater fittings
Full cathodic bonding system to zinc anodes
Hydraulic bow thruster (30hp sequential operation)
Hydraulic stern thruster (30hp sequential operation)
Hydraulic trim tabs
Antifouling

27 Systems

Hydraulic power steering 24v
Electric toilet system with integrated macerator (Tecma 24v) with two switch control
Toilets discharging overboard or to black-water tank
Black waste water tank discharging to dockside or overboard
Washbasins, showers, air conditioning fans units discharging to grey water sump
Aluminium fresh water tank with electric sending unit
Integral GRP fuel tank with electric sending unit
Water pressure system (24v)
Hot-water circulating pump AC
2 x 150 litre calorifiers, each with 2 x 2kW immersion heaters
Chilled water air-conditioning system (reverse cycle) AC
Automatic bilge pumping to all watertight compartments combined with high level alarm (24v)

28 Miscellaneous and supply items

Retractable boat hook
6 x docking lines
(6 x 15 metre, 20mm diameter, black)
1 x tender line
(1 x 10 metre, 10mm diameter, black)
8 x fenders
(F7, 15 inches x 41 inches, white)
8 x fender lines
(8 x 3.5 metre, 10mm diameter, black)
Stainless steel flagstaff with line
Pennant mast with pennant flag
Mosquito screens for all openable portlights
12 x towel sets
First aid kit
Fire blanket
Deckwash fitting and hose reel
Vacuum cleaner

PRINCIPAL CHARACTERISTICS

PREDATOR 92 SPORT

PRINCIPAL CHARACTERISTICS

Length overall – (incl. pulpit and transom platform)	28.16m	92'5"
Beam – (maximum)	6.34m	20'10"
Fuel capacity	8,500 litres	2,245 US gal.
Fresh-water capacity	1,500 litres	396 US gal.
Black-water capacity	435 litres	115 US gal.
Propulsion	Twin fixed-pitch propellers or triple Arneson surface drives	
Generators – standard	2 x 25kW @ 50Hz 230v single phase (Euro) 2 x 28kW @ 60Hz 120/240v single phase (US)	

TWIN SHAFT VERSION

Draft – (@ full load incl. props)	2.09m	6'10"
Displacement – (@ half load)	68,800kg	151,360lb
Maximum speed	up to 35 knots*	
Cruising speed	up to 23 knots*	
Range (nautical miles)	up to 400*	

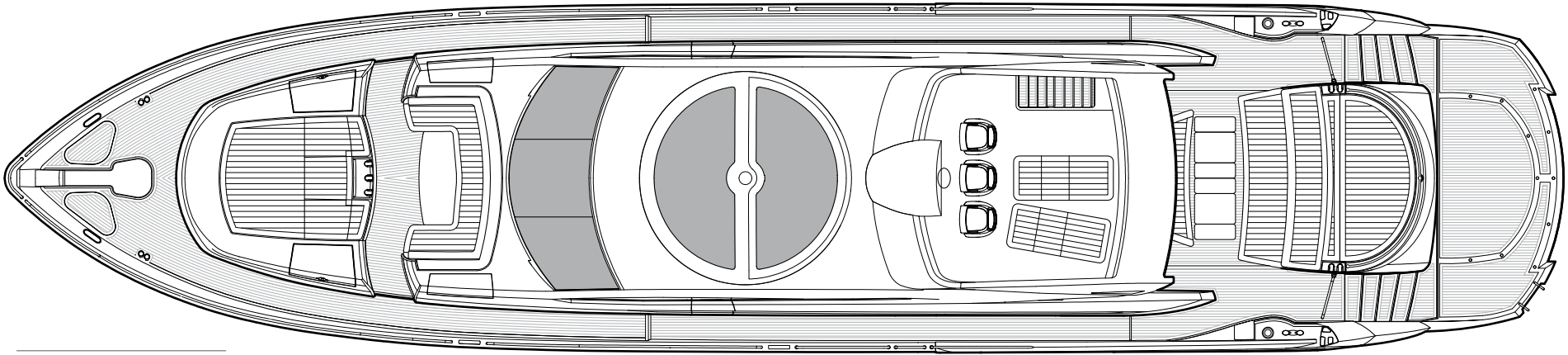
TRIPLE ARNESON VERSION

Draft – (@ full load incl. props)	1.67 – 2.00m	5'6" – 6'7"
Displacement – (@ half load)	72,800kg	160,160lb
Maximum speed	up to 42 knots*	
Cruising speed	up to 33 knots*	
Range (nautical miles)	up to 300*	

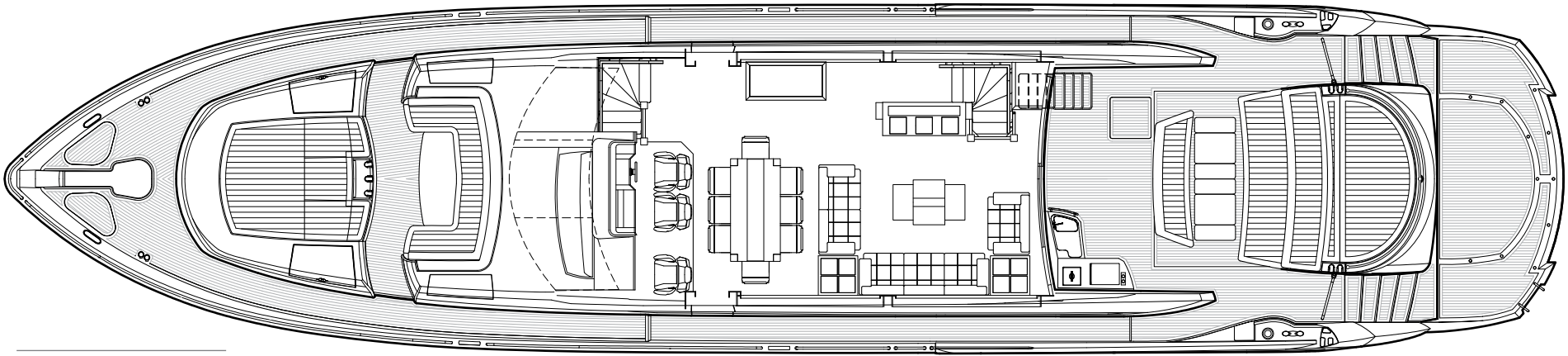
All principal characteristics and specifications are provisional and subject to final specification.

GENERAL ARRANGEMENTS

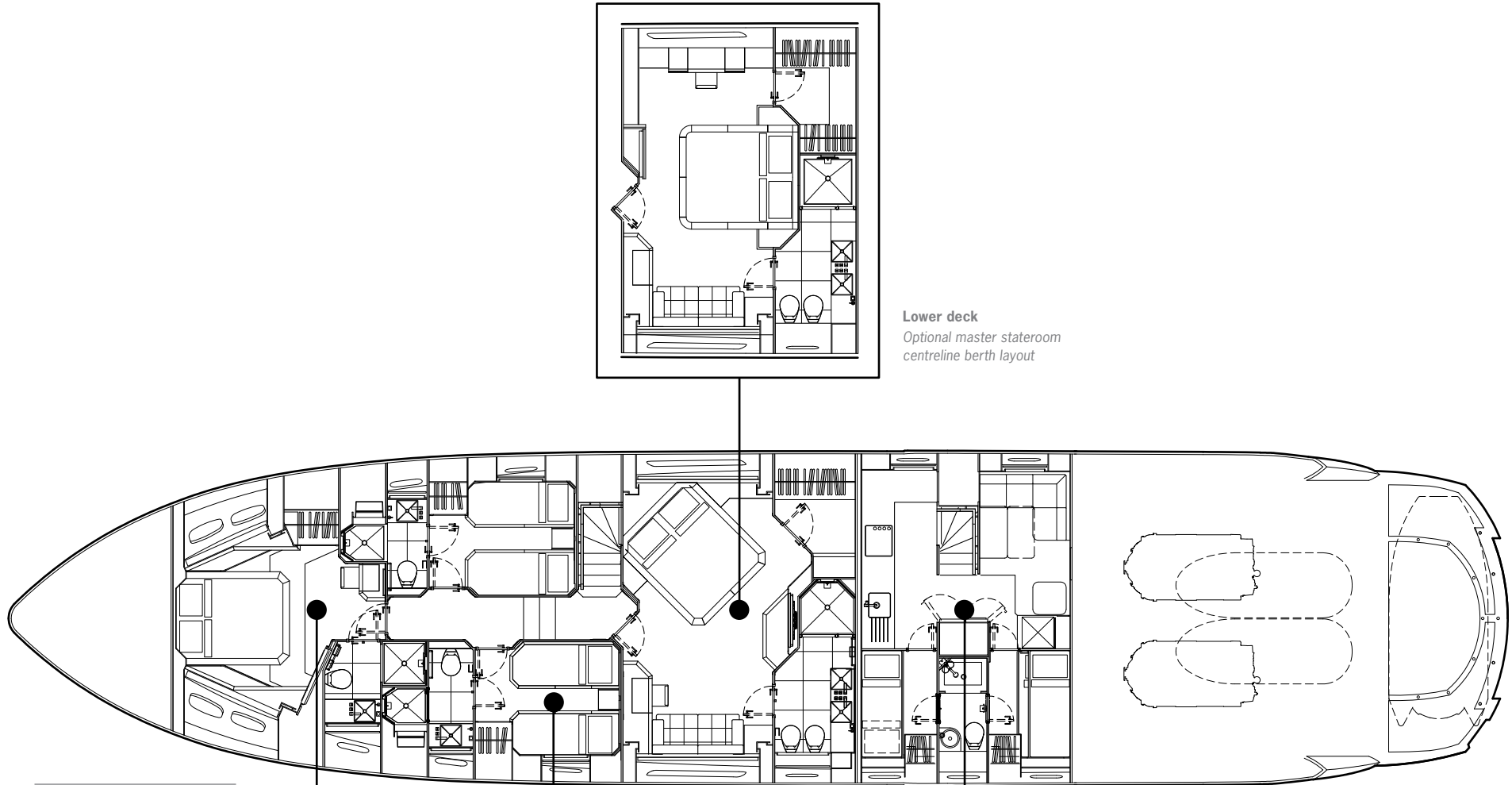
PREDATOR 92 SPORT



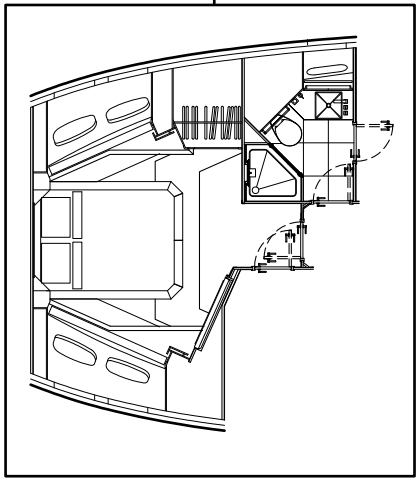
Flybridge



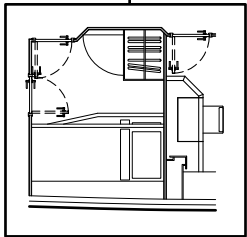
Main deck



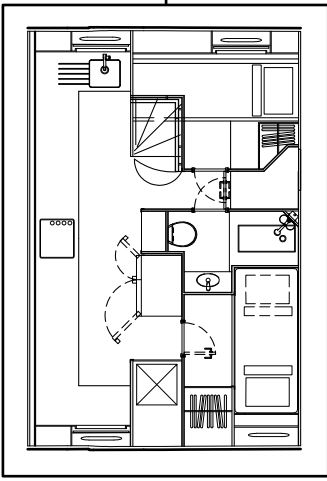
Lower deck



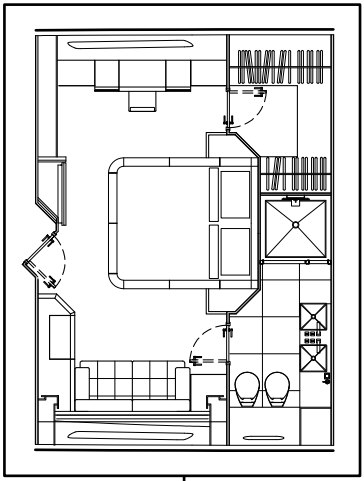
Lower deck
Optional day head layout



Lower deck
Optional port Pullman and enlarged master layout



Lower deck
Optional crew/galley layout



Lower deck
Optional master stateroom
centreline berth layout



Awards

Sunseeker's success over the years is clearly underlined by the following list of national and international awards and achievements.

2011	Asia Boat Awards	Best brand presence in Asia	2004	Sydney Boat Show 2004	Best Overall Display
2011	European CEO corporate lifestyle awards	Best luxury brand	2004	Sydney Boat Show 2004	Best Marina Display
2011	Showboats Design Awards Florida	Naval architecture motor yacht 'Evil Zana' Predator 130.	2003	Australian Marine Awards	Manhattan 56, Award for Excellence
2010	World Superyacht Awards	Predator 130 'Evil Zana' – finalist	2003	Australian Marine Awards	Predator 68, Best Imported Non-Trailable Yacht
2010	Quintessentially Awards	Yacht charter of the year	2002	Entrepreneur of the Year Award	Robert Braithwaite MBE
2010	Sydney Boat Show	Boating Industry Association of NSW – Best Marina Display 2010	2001	Best Power Design Award	105 Yacht, The Superyacht Society
2010	Sydney Boat Show	Boating Industry Association of NSW – Best Overall Display	2001	Best Power Interior Award	105 Yacht, The Superyacht Society
2010	Asia Boating Awards	Predator 60 – Best Production Motor Yacht 51 to 80 feet	2001	President's Award	Southern California Marine Association
2009	Sydney Boat Show 2009	Display of Excellence	2000	Queen's Award for Enterprise	Continuous innovation and development
2009	Croatia Boat Show 2009	Predator 92 Sport – best in class	2000	The Times Exporter of the Year	Times Export Awards
2009	Croatia Boat Show 2009	30 Metre Yacht – best in class	2000	Robb Report Award	Best of the Best, Boating and Sailing
2009	Croatia Boat Show 2009	Best boat show stand	1999	Robb Report Award	Best of the Best, Boating and Sailing
2008	UK Motor Boat of the Year Awards 2008	Manhattan 60	1999	Motorboat of the Year	Predator 75, BT British Nautical Awards
2007	European Powerboat of the Year	Superhawk 43	1998	Superyacht Design Award	Manhattan 74, Superyacht Design Awards
2007	Asia Pacific Boating Awards	90 Yacht, Best of the Best	1998	Editor in Chief Awards	Yachts Magazine
2007	Modern Boating Magazine 2007	Portofino 47, Imported Powerboat of the Year	1997	Lifetime Achievement Award	Robert Braithwaite MBE, RYA Awards
2007	Australian Marine Industries Federation Awards	Predator 62, Imported Powerboat of the Year	1996	Motorcruiser of the Year Award	RYA British Nautical Awards
2007	Nominated by The Superyacht Society	37 Metre Yacht 'The Snapper'	1996	Exporter of the Year Award	DCCI Export Awards
2007	Queen's Award for Enterprise	International Trade	1995	Boat Builder of the Year Award	RYA/BMIF British Nautical Awards
2007	Robert Braithwaite is honoured with CBE	The Queen's Birthday Honours List	1994	Queen's Award for Export Achievement	Queen's Awards for Industry
2006	Nominated for three Superyacht Awards	Predator 108 'SHIVER'	1992	Best in the World Award	Renegade 60, Boating Magazine
2005	Australian Marine Industries Federation Awards	75 Yacht, Non-Trailable Boat Award	1992	Robert Braithwaite is honoured with MBE	The Queen's Birthday Honours List
2005	Australian Marine Industries Federation Awards	Portofino 46, Commendation	1990	Exporter of the Year	SW International Business Awards
2005	Modern Boating, Power Boat of the Year Awards	Predator 68, Imported Powerboat of the Year	1989	Queen's Award for Export Achievement	Queen's Awards for Industry
2005	Boats.com Marine Industry Web Awards	Manufacturers Category for www.sunseeker.com	1987	Queen's Award for Export Achievement	Queen's Awards for Industry



Sunseeker International Limited has CE Approval which is compulsory for all boats with a LOA of 24m and below when sold in the EU.



QUINTESSENTIALLY BRITISH

*Every attempt has been made to give accurate information, but performance and range figures are estimates given as a guide only. Dirt or growth on the hull, tuning of the engines, size, make of engines fitted, damage to propellers, the temperature of the air and water, the weight of fuel, water, stores, number of people, propeller pitch, quality of fuel and other matters, can all affect a boat's performance and range. For these and other reasons we can give no performance, range or other guarantees, and neither such guarantees nor anything contained herein constitutes an offer of contract or any representation or agreement, or may otherwise be relied upon. The photographs and artist's impressions in this brochure are from existing models in the Sunseeker range. There may be items shown in these photographs and artist's impressions that are not included in the standard inventory of the models shown. Specifications contained in this brochure are provisional only and should not be relied upon and may refer to models only intended for sale in a particular territory and not generally. No guarantee is given that any model will be available in any territory; however by contacting us we can advise you of models that are likely to be available in each territory. In some examples herein we have referred to measurements, specifications or other details applicable to a particular territory and no guarantee is given that these are applicable to your territory. Actual specifications will be provided when a sales order or enquiry is placed with us or our approved Sunseeker distributor. Specifications for models sold in different markets may vary and specifications and models may be changed or withdrawn at any time without prior notice. The individual specification for each vessel will be agreed as part of the sale contract between the purchaser and the Sunseeker distributor. Distributors are independently owned and operated entities, and therefore Sunseeker distributors are not owned by Sunseeker International Limited or any subsidiaries or other related entity of this company nor are they their agents. Therefore they have absolutely no authority to commit Sunseeker International Limited, or any subsidiary or other related entities of Sunseeker International Limited to any pledge, contract or agreement in any form or by any means unless first accepted in writing by Sunseeker International Limited. For ease of reference we have, in some cases, referred to "we" or "Sunseeker" and these terms should be taken to mean Sunseeker International Limited.