

Bud Macintosh Schooner

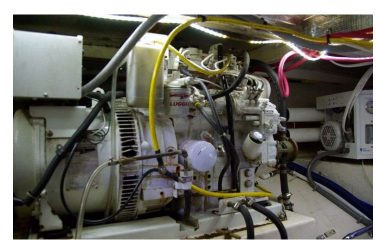
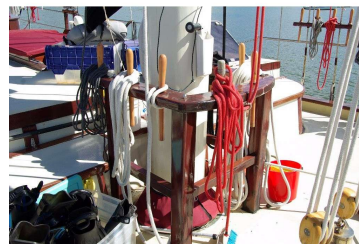
For Sale \$2,850,000 Asking is USD 1.9m

features	DETAILS
Launched	2015
Manufacturer / Design	Bud Macintosh
Model	Gaff Rigged Schooner
Stock #	7878-A
DESIGN & CONSTRUCTION	
Exterior Colour	White
Builder	Richmond Boat Works
LOA	29 m (approx)
LWL	21 m (approx)
LOH	23 m (approx)
Beam	6.5 m (approx)
Draft	3.5 m (approx)
Hull Type	Mono Hull
Construction	Cold moulded Douglas Fir (5-5.5"), glassed. Planks pre-saturated with marine grade epoxy resin
Transom	Traditional. 15mm (6") planks.
ENGINE	
Engine Details	Cummins 400 turbo 6CTA8.3-12
Engine Hours	1000 (approx)
Engine Type	Diesel
Engine Year	1996
Engine Comments	Maintained as per manufacturer's specifications. Maintenance records. New injectors.
Drive	50mm (2") straight shaft
Number of Engines	Single
Max Speed	10 Knots (approx)
Crg Speed	5 Knots (approx)
Fuel Cap	2270 Litres (approx)
Fuel Tank	2 steel

RIGGING & SAILS	
Rig	Gaff rigged schooner
Rigging	16mm/19 strand stainless steel wire with Norseman mechanical terminal fittings ans stainless steel chainplates.
Reefing	2-point reefing
Spars	Solid timber masts and booms
Sails	Tanbark sails. 1 main, 1 foresail, 2 jibs, 2 staysails, 1 fisherman's, 1 topsail.
Winches	4 winches (2 electric)
INTERIOR	
Berth	15: 4 doubles and 7 singles
Headroom	2-2.5 metres m
Toilet	5
Cooking	Oven, 3 burners plus 1 BBQ
Cabin No.	5
ACCESSORIES	
Safety Equipment	EPIRB, GPS
Dinghy	ABB centre console 3.7 metres with 30hp Nissan. Also 3 metre Anchilles 9.9hp and 3.3 outboards
Navigation Gear	Raymarine chartplotter, 2 radars, nav screen with world charts. Full panel
Capstan	1 capstan on windlass

OTHER FEATURES

Stunning 29 metre gaff-rigged schooner, launched 2015. This finely crafted vessel is a contemporary classic with many modern features. She was built in San Francisco Bay with charter and adventure tourism in mind. Below decks, 4 double cabins each with ensuite and other amenities, a large well equipped galley and comfortable saloon offer all the luxury one can expect while on deck there's alfresco dining and plenty of space to relax. Construction is cold-moulded Douglas Fir with solid timber spars. Inventory and modern systems include: Cummins 6CTA8.3-12 Turbo, 2electric hot water systems, 5 showers, 2 fridges, 4 solar panels, 13Kw genset and Victron inverters, full instrumentation, 110 and 240v shore power, electrics and gas certified, Aqua Whisper 150l/hr water-maker, bowthruster, Lofrans Ercole horizontal windlass with dual gypsies and single capstan drum, 2 Danforth and 1 Rocna anchors, 137 metres 16 mm chain and 2 Mermaid reverse cycle air conditioners. A 1996-2002 63ft Jeanneau would be considered as part payment. For specs, please call Vinings Opu office - 09 402 6093.



The above information is believed to be correct but is not guaranteed. We are acting as Brokers passing along information received from the boats owner or his Agent. No representations about the boats physical condition are made.

Sjo-Opu

