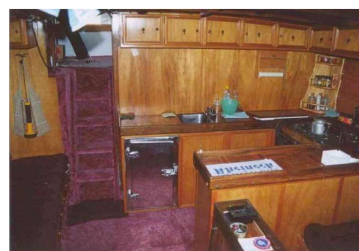
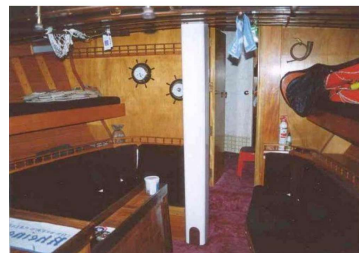


Athol Burns 54ft Pilothouse

For Sale \$179,000

| features | DETAILS |
|-----------------------|--|
| Launched | 1966 |
| Manufacturer / Design | Athol Burns |
| Model | 54ft Pilothouse |
| Stock # | VY5160 |
| DESIGN & CONSTRUCTION | |
| Builder | Lowe |
| LOA | 16.6 m (approx) |
| Beam | 4.27 m (approx) |
| Draft | 2.13 m (approx) |
| Hull Type | Round bilge, full keel |
| Construction | Hull 1-3/4" Planked Kauri, 15" x 6" ironbark keel, 3" x 2-1/2" ribs @ 7" centres, deck 1-1/2" Matai over Kauri ply with 1" teak on top |
| ENGINE | |
| Engine Details | 88hp 6cyl JK6M Lister diesel |
| Gearbox | Lister 3:1 reduction |
| Max Speed | 8.5 Knots (approx) |
| Crg Speed | 6 Knots (approx) |
| Fuel Cap | 2450 Litres (approx) |
| Fuel Tank | (Steel, 4 tanks) |
| Water Cap | 900 Litres (approx) |
| Water Tank | 2 x Steel |

| RIGGING & SAILS | |
|---|--|
| Rig | Ketch |
| Rigging | Galvanised plough wire |
| Reefing | Slab main |
| Spars | Box section Oregon - main 53' & mizzen 34' |
| Sails | Nalder sails; Main, mizzen, jib & staysail, storm jib & trisail |
| Winches | 2 x sheet & 4 x halyard |
| INTERIOR | |
| Berth | 9 |
| Toilet | 2 x Marine flush (holding tank) |
| Cooking | 5 Burner kero stove |
| ACCESSORIES | |
| Safety Equipment | 6 Bilge pumps, 3 liferings, danbuoy, epirb, 7 x lifejackets, flares (oos), RFD 8 man liferaft, spotlight |
| Dinghy | - |
| Navigation Gear | 2 x Compasses, TMQ autopilot & remote, 16 mile radar, vhf, ssb, depth sounder, log, nav lights |
| Ground Tackle | 5 Anchors, 60 fathoms chain & 2-1/4" nylon warp |
| Capstan | Electric aft, hydraulic fwd |
| OTHER FEATURES | |
| Hot & Cold pressure water (hot off engine), shower, stereo system, 20cu ft deepfreeze fridge (engine compressor), clock & barometer, galley gear, Kauri interior joinery, 2 station steering, main saloon 14' x 12' has 5 berths, aft cabin with 3 berths and head, fwd cabin 2 berths, 3 battery systems, 2 boom tents, jetty warps, boarding ladder, fenders, 2 x boathooks, 4 blade prop, 34 ton displacement, 5.5 ton lead on keel, 2000 mile range motoring at 7 Kts (1000 RPM), Electric capstan aft, hydraulic capstan fwd NZ Reg Ship, has been Cat 1 | |



The above information is believed to be correct but is not guaranteed. We are acting as Brokers passing along information received from the boats owner or his Agent. No representations about the boats physical condition are made.

Wes-Opu

