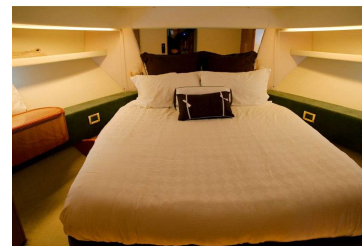


# Azimut 58, 2000

For Sale \$795,000

features	DETAILS
Launched	2000
Manufacturer / Design	Azimut
Model	58
Stock #	9200
DESIGN & CONSTRUCTION	
Exterior Colour	White
Builder	Azimut-Benetti Group
LOA	17.8 m (approx)
Beam	4.8 m (approx)
Draft	1.2 m (approx)
Hull Type	Mono Hull
Construction	Fibreglass (GRP)
Transom	Walk Thru with boarding platform and passerelle
ENGINE	
Engine Details	MTU 8V 183 TE 93, 767 hp x 2
Engine Hours	1350 (approx)
Engine Type	Diesel
Engine Propulsion Type	Inboard
Engine Year	2000
Drive	V Drive 1.92 to one ratio
Transmission	Twin Disc MG 5114 RV, 1:1.92 VDrive
Number of Engines	Twin
Max Speed	32 Knots (approx)
Crg Speed	28 Knots (approx)
Fuel Cap	2600 Litres (approx)
Water Cap	900 Litres (approx)

INTERIOR	
Berth	2 double; 2 twin plus 1 crew - total of 4 cabins
Toilet	Heads x 4
Stereo Type	Fusion AV 700i, 4 zone, Speakers and Subwoofer Amplifier, Blue Tooth Streaming Kit
Cooking	Ceran 3 Burner Cook Top, Moulinex Symbio Microwave/Grill Oven, Bosch Dishwasher
Cabin No.	4
ACCESSORIES	
Safety Equipment	Kanard EPIRB, Auto Fire System for Engines/Generator, PFD's, Liferaft (OOD)
Dinghy	Zodiac 3.1 Tender, 2014 with 9.9 hp Yamaha OBM (2014)
Navigation Gear	Raymarine Depth Sounder, Digital Radar, Lg/Speedometer, Autopilot etc with integrated twin iPad to give a total glass bridge feel.
Ground Tackle	40 kg Rockna, approx 80 m chain; salt water anchor wash
Capstan	Lofrans capstan with up & down foot switches
OTHER FEATURES	
<p>Nomad is an immaculate example of the prestigious Azimut 58 Flybridge Motor Yacht. Current owners have spent \$100,000 on additions and upgrades since she arrived in New Zealand in 2014. Nomad has all you expect in an Azimut plus much more. Some of the features include: saloon with dining, lounge and entertainment center with cheery cabinetry and pearl detail; galley includes Corian style counter tops, Moulinex Symbio microwave/grill oven &amp; dishwasher; helm station has new Raymarine MDF package including digital radar, Chirp Downvision Fishfinder with twin integrated iPads for "total glass bridge feel"; accommodation includes guest cabin with two single berths, guest bathroom which also serves as a day head, master suite with en-suite head and separate shower, VIP cabin with head and separate shower; cockpit includes Italian 6 seater teak cockpit dining table with 4 folding bamboo chairs. Other features worth noting are bow and stern thrusters, Kohler 17.5 kw generator (1,640 hrs), Mastervolt 1,500 v inverter, air conditioning (7 stations), passerella that doubles as a hydraulic dinghy davit, crew accommodation with head and shower, start batteries (Sept 2018), antifoul and anodes (Oct 2017).</p>	



The above information is believed to be correct but is not guaranteed. We are acting as Brokers passing along information received from the boats owner or his Agent. No representations about the boats physical condition are made.

Nom-Bay

