



Discover a whole new world of adventure  
WORLD PREMIERE 2020

## Long range cruising is the ultimate escape

Riviera's Sports Motor Yachts have two very different personalities ...created for those who dream big... who want the power and performance of a passagemaker but with all the cruising comforts of a luxury motor yacht.

This new 64 model has it all including walk around side decks, foredeck lounge and entertaining zone, covered mezzanine dining, aft galley, utility cabin or optional crew accommodation, stand up engine room, fully enclosed flybridge with internal staircase and very generous four stateroom/three bathroom accommodation. Riviera has then wrapped these features in a truly unique exterior design that offers very sporting looks. The sporting aspect of this exciting yacht also extends to her performance and her smooth quiet and efficient ride is very stately in all weather and sea conditions. Finally her large and uncluttered cockpit is near the waterline and therefore opens up a whole world of adventure from sports fishing to diving to paddle boarding or kayaking.

"Owners have embraced this new and innovative design and we now have Riviera Sports Motor Yacht owners cruising the Mediterranean, South-east Asia, the Caribbean, the South Pacific and the Whitsundays."

"Proudly built in Australia for our often challenging conditions, our Sports Motor Yachts offer a standard of craftsmanship that truly sets them apart."

"We believe our new 64 SMY represents the state-of-the-art in cruising excellence."



Rodney Longhurst - Owner Riviera









## **Riviera 64 Sports Motor Yacht: Redefining style, luxury and performance**

Our new Riviera 64 Sports Motor Yacht is the latest addition to our ultra-luxury cruising family. With signature sports looks, sports performance and sporting cockpit, renowned Riviera luxury appointments and superior offshore, extended cruising capability this blue-water yacht has it all. A smooth and quiet ride at speed redefines the class and exceeds expectations.

Designed by 4D Designs in collaboration with the Riviera design team and built in-house to our exacting standards on Australia's Gold Coast, this beautiful new series of sports motor yachts was inspired by a wish list from our global family of experienced Riviera owners seeking to strike out further for longer to celebrate true long range luxury cruising the Riviera way. Now you and your loved ones can escape the everyday for a weekend or for an extended period to the most alluring ports within your reach.

Onboard your Riviera Sports Motor Yacht, you will fall under an exotic spell in the absolute lap of luxury, revelling in adventure, exploring, diving, snorkelling, kayaking, fishing, creating and sharing truly memorable moments with family and friends – for as long as your schedule allows or heart desires.

## Welcome aboard - the wide blue beyond launches from here

The Riviera Sports Motor Yacht family are uniquely specified craft that share a single vision of cruising in absolute luxury. The generous cockpit is near the waterline which opens up a whole world of sporting opportunities from sports fishing to diving to paddle boarding or kayaking. The mezzanine is the entertaining centre offering privacy and shelter from the harsh sun and weather.

So come and experience the cockpit for yourself. Step easily from the dock onto the spacious boarding platform and enter via either of the outward opening transom doors. The deck itself is an image in teak; wide and beautiful.

In typical Riviera fashion, a wealth of practical, well considered features are built into this large, welcoming cockpit space including an alloy plate in a reinforced section of the floor so you can easily fit a game chair. or outdoor table. The cockpit is self draining and all the

hatches have gas struts for easy access and heavy duty lock downs. There is an enormous volume of storage space including large lockers in the transom, side coaming lockers and deep fish bins in the floor.

Either side of the teak inlaid steps leading up to the mezzanine you'll find everything you need for relaxed open-air entertaining. There's a fridge/freezer and insulated ice-box as well as a barbecue station with sink and bin chute. The lids lift up and stay up on gas struts, with LED lighting and a double moulded finish to make cleaning easy.

Picture the whole family now: it's dusk at anchor in the islands. Refreshments have just been served in the cockpit. A pod of dolphins cruise by, as happy in their element as you are in yours...







## Remarkable assurance and entertaining to the fore

It's clear that passenger assurance is a priority; wide side decks with high coamings illuminated in soft blue LED light, the sure-footed grip of non-skid surfaces and the reassuring support of 316 marine grade stainless steel handrails everywhere they should be.

The foredeck is a versatile space at anchor or underway – to launch or retrieve the tender, for whale watching, sightseeing, entertainment or relaxation. Practically speaking the foredeck boasts plentiful storage lockers to port and starboard discreetly hidden from view. The bowsprit has been to aid anchoring and streamline the bow visually.

The foredeck is where most owners choose to securely store their tender with effortless unloading courtesy of a 450kg low profile boom davit and electric winch, located starboard.

Time for a break? At anchor the foredeck transforms into a fabulous entertaining area with supremely comfortable fold away lounges creating a U-shaped 8 seater relaxation station complete with generous ice boxes for cool drinks and a dedicated four speaker sound zone with smartphone interface. There's even the option of a sun shade awning. Glorious.

## The sheer magic of the mezzanine

A beautiful space, offering protection from harsh sun and weather, the mezzanine is the entertaining centre of your cruising yacht. Two teak inlaid steps lead up from the centre of the cockpit and now you're in the lap of luxury. To appreciate the full glory of this clever design, open the tinted glass door, then open out the large tinted glass awning window, both framed in highly polished stainless steel. Now the mezzanine connects and flows through to the saloon and galley.

There are two supremely comfortable L-shaped lounges either side with large storage lockers below. Forward on the port side is an icemaker with drawer storage whilst the L-shaped starboard lounge wraps around a highly polished folding teak table. The easy proximity to the galley means snacks and meals are never far away.

In concert with the golden coloured teak decking at your feet and soft concealed lighting above you'll savour the central mezzanine ambiance day and night.

Completing the picture of this relaxed luxury lifestyle is a portside, LED TV with two-speaker system that folds down from above for those important sporting moments that must be seen and shared live.

You'll love relaxing and entertaining on the mezzanine - one of the many outstanding design features that elevate Riviera's Sports Motor Yachts to a class of their own.





## Far more than a traditional galley

By any meaningful measure – size, layout, standard of cabinetry, décor and appointments – the galley of your Riviera Sports Motor Yacht could easily pass for a fine designer kitchen. This ultra modern galley is flooded with natural light and is located in exactly the right place, midway between the saloon, mezzanine and cockpit. So here in this social and yes, superbly appointed hub, expect lots of company from your guests and the best kind of kitchen ergonomics from our talented Riviera design team.

A complete set of premium brand stainless steel appliances are all within easy reach, beautifully integrated into the handcrafted Riviera joinery of mirror varnished walnut and solid surface benchtops. Additional storage lockers with positive locking hardware are built in overhead, along with large pull-out pantry drawers all on commercial grade runners.

Helping you create gourmet meals in no time are a combination oven and microwave with grill, 3-element induction cooktop with potholders and rangehood. Long range cruising demands a lot of refrigeration which is why your galley has a full height refrigerator to starboard with two freezer drawers below and another two fridge drawers opposite and most important ... a wine cooler. And you'll appreciate the size of the dishwasher when it's clean-up time. We set out to create an inspired space to enjoy preparing food, cooking and socialising. And that's exactly what we've done!









## Settle into the large and luxurious saloon

The further afield your travels take you the more you will luxuriate in all the refinements and comfort of your saloon. At different times of the day, wherever the compass points you, it will serve as your favourite retreat – a place to sit, converse, dine, conduct business, bring family together, entertain honoured guests and always unwind.

The large forward windscreen and sliding saloon windows reveal a constantly moving panorama of sky and sea, natural and exotic. Here our designers have captured a wonderful ambiance, always peaceful and quiet through the skilful integration of sound dampening fabric and leatherette panelling and cocooned in the comfort of reverse cycle air conditioning.

Ahead of the galley to starboard is the L-shaped leather lounge dining area with a polished timber table – cleverly designed to fold at both ends and manually slide athwartships.

To port, your guests will stretch out and relax on the supremely comfortable designer lounge with a matching ottoman that doubles as a coffee table with the flip of a cushion. The saloon transforms into a media room at the press of a button with a 50-inch LED TV rising into view forward of the galley. There's a Blu-ray player and home theatre sound system hidden in the adjacent cabinet powering five concealed surround sound speakers and two more in the cockpit.

What else will impress? Frankly everything: including the handcrafted internal saloon staircase leading to the flybridge and the space-saving portside pantograph door giving you quick easy access to the side and foredeck.

## Four stateroom, three bathroom design

Where flexibility meets absolute luxury ... the Riviera 64 Sports Motor Yacht has been designed to fulfill your desires to go further and stay away for longer. All in absolute comfort without compromise. As you would expect the accommodation deck expresses this guiding philosophy in eloquent and luxurious terms with in-built design personalisation.

The 64 Sports Motor Yacht boasts a four stateroom design with full beam master suite. There's also the option for an aft crew cabin with separate access or you can use this space as a utility room for all your watersports equipment storage, a workshop or dedicated laundry.

The master stateroom is presidential in every sense and your master bathroom is pure luxury; designed to make you feel totally at home, wherever in the world you may be. Riviera's designers have created an ensuite that goes beyond what you might expect. A beautifully handcrafted vanity cabinet, solid surface benchtop, designer full-sized shower and more, the effect is both appealing and contemporary.

And perhaps one of the nicest touches is a classic, ocean going, opening porthole that reinvigorates your being with fresh tangy sea air. Of course an alarm system to the helm ensures portholes are always shut when underway.









## A presidential master stateroom design

Looking after your needs masterfully ... the keynote is pure luxury, an invitation to get away from the everyday and stay away as long as possible. Here, in your palatial master stateroom, you will want for absolutely nothing no matter how far reaching the journey.

The master stateroom spans the full beam and your luxury ensuite bathroom is located aft on the starboard side creating a truly practical and spacious retreat. The king-sized island bed is pure heaven and features a plush headboard in concert with lush deep pile carpet. An elegant array of LED lighting overhead makes for a warm welcome. Boutique bedside tables, grain-matched with leather inlays and a highly polished timber drawer unit to starboard add that 5 star feeling. An elegant chaise longue to port completes the luxe style.

Naturally both the master and ensuite feature reverse cycle air conditioning. However, large hull picture windows framing either both sides, fill the space with natural light and a special feeling of being at one with your surrounds.

A feeling accentuated on balmy days by fresh fragrant air from the opening portholes.

And when it comes to storage we know you plan on being away for extended periods. Hence your king sized island bed hinges up on the port side as if weightless on a pair of gas struts, providing easy access to a handy storage area perfect for suitcases and spare bedding. The finely-crafted cedar-lined hanging lockers feature shoe shelves, 'his' and 'hers' full length hanging space and a thoughtful Riviera extra ... a safe for your valuables.

Relax and unwind. Your 43-inch LED TV with soundbar is standing by waiting to entertain.

## Honoured guests enjoy the very accommodating VIP stateroom

The Riviera Sports Motor Yacht embodies luxury on an a grand scale. When guests are introduced to their VIP stateroom they naturally think you are treating them to the master suite. They can easily be forgiven for thinking so, given the private entry, private ensuite, a walk-around queen-sized bed and stunning cedar-lined Riviera cabinetry – including a hanging locker and shelving with auto LED lighting to starboard and a generous storage locker to port. Guests will enjoy the sparkle of the water and the colour and movement of the world outside through stylish tinted glass panels along both sides of the cabin. The VIP ambiance has been skilfully crafted with plush pile carpet, sound dampening fabric panels, reverse cycle air conditioning and high quality entertainment courtesy of the LED TV and sound system.

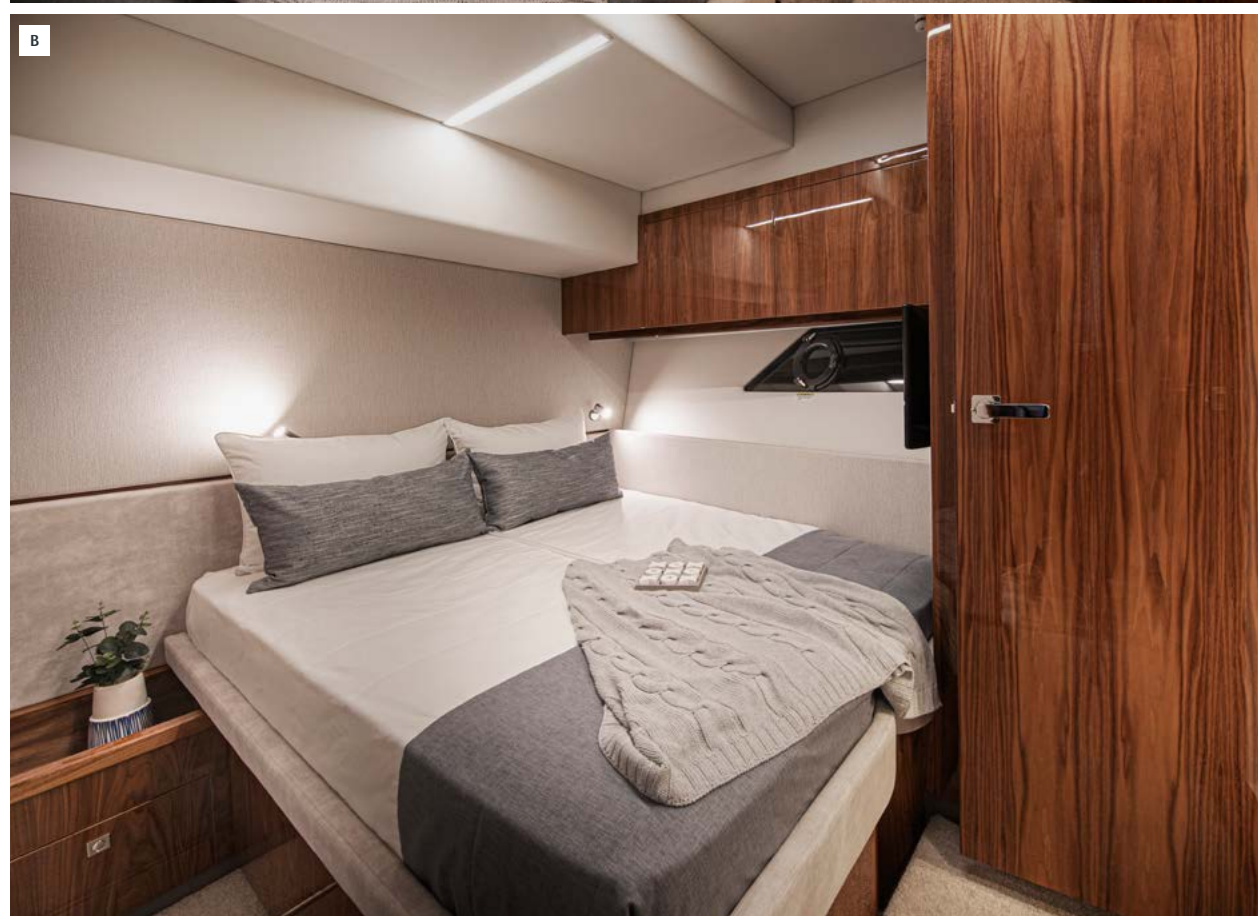
The adjoining VIP ensuite is a wholly contemporary designer space boasting clean lines and five star décor. Your guests feel pampered by peerless Riviera appointments including a handcrafted vanity cabinet, stylish basin, full-sized shower with frameless glass door, even the luxury of a tinted hull window with opening porthole.





## A very clever guest stateroom portside

The guest stateroom to port has a unique and inspired touch of bedroom flexibility. Simply press a button and the inboard single berth will smoothly slide across to form a beautiful restful double. There's ample storage, reverse cycle air conditioning, deep pile carpet underfoot and LED lighting overhead. Guests also appreciate the LED TV and entertainment centre, cedar-lined hanging locker and hull window with opening porthole. This stateroom shares a combination two-way entry day head, and as with the VIP ensuite, guests are always pleasantly surprised by the space, luxuries and design flair – a frameless, full sized shower, designer vanity, solid surface benchtop and large mirrors.



**A and B** Port guest stateroom offers versatility as twin single berths slide together at the touch of a button to create a double.



## With even more guest accommodation to starboard

The fourth cabin enjoys natural light from the tinted hull window and fresh sea air at anchor, courtesy of an opening porthole. There are two adult sized Pulman style beds, bedside table, plush carpet, cedar-lined hanging locker with LED lighting, reverse-cycle air conditioning and private entrance door. Guests share the combination ensuite of the third stateroom via the day head entry.

When the finest materials meet superior flair and commitment, true luxury is created. That's exactly what you and your guests will experience on the accommodation deck of this unique yacht.





## The sensational flybridge

It's time to explore the flybridge. Ascend the beautiful walnut treads of the internal staircase to a whole new level of luxury.

There is so much that is exciting and innovative about the flybridge of your sports motor yacht - it is a story that needs to be told in two parts: the four sided, enclosed internal flybridge area and the exterior aft flybridge deck.

Inside. Light and space beyond anything you've ever experienced on a command deck, courtesy of wrap around tinted glass. It's a feeling like being on top of the world.

Something else is immediately apparent, or should we say completely absent - engine noise - especially at speed. The flybridge of your Riviera Sports Motor Yacht is extremely quiet, even when this astonishing craft is in full flight - and that ambience extends throughout the mezzanine, saloon and accommodation deck. Strategically located stainless steel grab rails make moving around this space, even at speed, safe and easy.

Enjoy the plush comfort of the L-shaped designer lounge complete with matching ottoman coffee table. There's a drawer refrigerator nearby for cool drinks as well as a fold-out double bed to provide additional accommodation for overnight guests.

Feel the urge for entertainment, either on a personal or celebration party scale? Standing by - housed in its custom made, highly crafted timber cabinet - is the 32-inch LED TV entertainment centre with iPod interface with six speaker sound system.

Outside. The clever design of the large rear awning window

has made flowing inside-out flybridge living possible - an upstairs equivalent of the signature flowing saloon, mezzanine and cockpit areas below. Underway this is the place to be out in the fresh air, at one with sky and sea. At anchor, it serves as a splendid private breakfast retreat or boutique entertaining area.

Picture yourself enjoying conversation around the folding teak feature table, resplendent on its gleaming stainless steel pedestal. The nearby wet bar, equipped with fridge drawer, ice maker, sink and bench top for easy preparation, ensures a constant supply of snacks and drinks to keep the party flowing.

The aft deck is also a place where the latest technology driving these yachts is also on display. It provides excellent visibility for docking or sport fishing by providing fingertip joystick control with electric steering and state of the art electronic and engine systems. Docking your Riviera Sports Motor Yacht into even the tightest marina berth is just like reverse parking your car.

True Riviera ease.

## Technology-enabled lifestyle and operation

Riviera's enthusiastic adoption of technology to enhance both onboard lifestyle and ease of operation is evident right throughout this flagship, not least in the flybridge and helm areas. Two outstanding examples: a touch button electric sunroof housed in the flybridge headliner - with heat film tinted glass - opens the space, and the senses, to blue sky and the natural elements. Next, putting your skipper and crew in single-glance control are cameras to the saloon, bow anchor, cockpit and engine room - with direct feeds to your helm navigation screens, and potential for future electronics' integration. These are but two examples of Riviera-style technology application. Effortless, easy and considered.









## The pure joy of being in command

The priceless feeling of being in charge of an exquisitely crafted piece of machinery, every facet in harmony performing precisely as it should, is now something you can experience offshore, every time you slide behind the wheel of your Sports Motor Yacht.

Look at all that cutting edge, touchscreen technology on the helm dash and at your side ... all of it fingertip control, all designed to harmonise perfectly with everything below in the engine room. Being skipper here is very rewarding and just so easy.

The Sports Motor Yacht collection is shaft-driven with power provided by a choice of highly spirited, famously reliable twin MAN V8 or V12 engines. Few cruising experiences compare with the pure joy and thrill of being in command of one of these craft. And you'll be surprised how quickly (you or your crew) will feel in total control as if skippering a motor yacht of considerably smaller size.

Seating and steering: Slide into the fully adjustable helm and companion chairs, made for extended time at the helm with folding arm, foot rests, and deeply comfortable hand-stitched leather. The sports inspired steering wheel feels, well, perfect to the touch.

The instrumentation: To port, Riviera signature timber cabinetry house vital electronics with circuit breaker protection, an intercom to the galley and engine room. At your side, to starboard, the EJS joystick is at hand, as are Twin Disc Quickshift controls and main helm electronic steering.

On the dash in front, below the massive curved windscreen with its three wiper system, exactly where you need them, reside the world's most advanced, easiest-to-operate-and read touchscreen navigation, radar and electronic engine controls.

You will note the comprehensive range of factory-fitted, custom electronic packages encompassing everything from radar to underwater lights, to help you personalise your dream long range cruising experience.





## **Dedicated laundry, utility room or crew cabin**

The mezzanine access to the engine room also connects through to the versatile aft crew cabin or utility space.

This space can also be accessed from the master stateroom ensuite and offers you a range of choices. You can use it to accommodate crew, or deploy it as a very practical utility room to store all your diving, fishing and water sports equipment. From the cockpit you can pass down all your rods and reels, fishing gear, wetsuits, snorkelling or diving gear through to the utility room and hose it all down on the self-draining floor. That keeps all the sand and mess outside the saloon or accommodation decks.

If you would prefer to use this space to accommodate crew, the aft crew cabin option features a standard of appointments you expect from Riviera; a private separate entrance via the mezzanine engine room hatch, reverse cycle air conditioning, single berth bed, storage locker, opening porthole, shower, head and vanity.

Another popular option for those with large families planning long range escapes is to use this space as a dedicated laundry with a separate washing machine and dryer and plenty of bench space for sorting and folding.

Riviera 64 Sports Motor Yacht



Optional teak cockpit floor



Optional tender and davit



Utility design



Optional crew design

## Preliminary Specifications

Length Overall <small>(inc. swim platform and bow sprit)</small>	21.23 m	69' 8"
Hull Length (Lh to ISO8666) *	19.41 m	63' 8"
Beam <small>(inc. gunwale)</small>	5.80 m	19' 1"
Maximum Draft <small>(inc. props)</small>	1.68 m	5' 6"
Dry Weight <small>(approx. depends on engines &amp; options) **</small>	42,980 kg	94,755 lbs
Fuel Capacity ***	6,500 L	1,717 US gal
Water Capacity ***	750 L	198 US gal
Holding Tank Capacity ***	500 L	132 US gal
Sleeping Capacity	8 persons + 1 crew	
Cockpit Area	9.10 m <sup>2</sup>	97.95 ft <sup>2</sup>
Mezzanine Deck	7.60 m <sup>2</sup>	81.81 ft <sup>2</sup>
Total	16.70 m <sup>2</sup>	179.76 ft <sup>2</sup>
Standard Engine		
MAN V8 1300 x 2	956 kW	1,300 hp each
Engine Option		
MAN V12 1550 x 2	1,140 kW	1,550 hp each

\*Specifications may vary on a regional basis.

## Specification clarification

\* Length of the hull (Lh) to ISO8666: Includes all structural and integral parts (ie. the moulded length of the hull). It excludes parts that can be removed in a non-destructive manner without affecting the structural integrity of the craft, (eg. pulpits, outdrives, driving platforms, rubbing strakes).

\*\* Dry weight represents the estimated minimum weight of a yacht with standard engines and options, no fuel or water on board, no equipment or provisions and no personnel. The stated dry weight may be exceeded.

\*\*\* Denotes net tank capacity. For useable capacity do not rely on more than 90% of tank capacity. Actual capacity will vary according to yacht trim and sea state. Speeds are subject to normal weather conditions, fuel and/or water levels, passengers and equipment loads.

## Our care for your information

Due to the constant refinement of specifications and design by Riviera Australia, the information in this document may change without notice. Specifications may vary with time and by region. Some images, illustrations or wording in this brochure may include options or custom details.

Please note that as safety equipment specifications or standards vary by country, this aspect of your purchase will need to be completed by yourself and or your Riviera representative.

Please refer to your Riviera representative for specific warranty cover and the latest detailed list of inclusions and options prior to purchase.

[RivieraAustralia.com](http://RivieraAustralia.com)