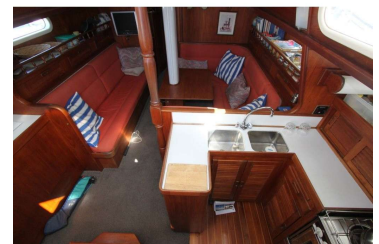


Young 43

For Sale \$115,000

features	DETAILS
Launched	1977
Manufacturer / Design	Jim Young
Model	43
Stock #	9321
DESIGN & CONSTRUCTION	
Exterior Colour	White
LOA	13.1 m (approx)
Beam	3.78 m (approx)
Draft	1.8 m (approx)
Hull Type	Round Bilge, Fin Keel
Construction	GRP Balsa Cored
Transom	Enclosed
ENGINE	
Engine Details	100 hp Yanmar 4JH2-UTE
Engine Hours	2900 (approx)
Engine Comments	Fresh Water Cooled
Drive	Shaft, 3 Blade fixed Propellor
Fuel Cap	600 Litres (approx)
Fuel Tank	Stainless Steel
Water Cap	600 Litres (approx)
Water Tank	Stainless Steel

RIGGING & SAILS	
Rigging	Stainless Steel
Reefing	In Mast Furling Main & Headsail Furler
Spars	Alloy
Sails	Mainsail & Genoa
Winches	2 x Cockpit - 2 x Mast
INTERIOR	
Berth	6
Headroom	Full m
Toilet	2 x Marine with Lectrasan
Cooking	Mariner Princess Gas -2 Burner, Grill & Oven
Cabin No.	2
ACCESSORIES	
Safety Equipment	2 x Horseshoe lifebuoy, 4 x Lifejackets, 3 x Auto Electric Bilge Pumps, 2 x Fire Extinguishers, Gas remote shutoff
Navigation Gear	Compass, VHF Radio, Depth Sounder, Autohelm 7000 autopilot
Ground Tackle	1 x CQR Anchors & 75m x 10mm Chain plus spare anchor
Capstan	12 volt
OTHER FEATURES	
Popular centre cockpit NZ made cruising yacht.	
Bow thruster, Diesel air heater. Hot & Cold pressure water, hot off engine, shower, fridge (compressor), TV/DVD, CD stereo, 2 x 12v start & 3 x 12v house batteries, 20amp Ctek battery maintainer, 2 x fenders, 9kg gas bottle, boarding ladder.	



The above information is believed to be correct but is not guaranteed. We are acting as Brokers passing along information received from the boats owner or his Agent. No representations about the boats physical condition are made.

She-Wai

