

Contact: Heath Walters  
0417 200 804  
hwmsg@gmail.com



**FOR SALE \$260,000**

**TURN-KEY SYDNEY TO HOBART RACER**



**PEKLJUS**

A Radford 50 Pekljus was originally built to Cat 0 by McIntyre Marine for a Don McIntyre Around the World Solo challenge which never eventuated. It has since been converted to a competitive comfortable ocean cruiser racer.



Engineered to take on the Southern Ocean. Her hull is Divinycell core sandwiched between hand-laid glass impregnated with isothalic resins with vinyl-ester tie layers. The deck is balsa cored, the keel is a stainless steel foil with a lead bulb through bolted athwart-ships. The keel is designed for easy removal for transport.



Set up for short handed sailing and fast passage this bullet-proof yacht provides a turn key opportunity for ocean racing and cruising alike.

Cat 1 compliant Pekljus has competed in five Sydney to Hobart races. Division winner in 2005, second in 2018. Pekljus won its division the Sydney to Gold Coast race in 2019 in addition to placing in numerous club events.



The extensive sail wardrobe provides options for all racing and cruising conditions. Pekljus is extremely well maintained and perfect for the growing Short Handed Division with its electric winches, full navigation equipment and water ballast.

Contact: Chris Links  
0410 681 997  
clnsmg@gmail.com

# Specifications

Design:	Pekljus Radford 50
Launch Year:	2004
Designer:	Graham Radford
Builder:	McIntyre Marine - Australia
Location:	Newport, NSW Australia
Length:	50' 0" – 15.2m
Beam:	3.66 m
Draft:	3.25 m
Displacement:	10200kg
Keel / Ballast:	Bulb on Duplex Stainless Fin
Hull Material:	Composite Vinylester and corecell laminate
Deck Material:	Balsa Core Fibreglass Composite
Engine:	33hp Yanmah



# Specifications

Max Speed under motor: 9 knots

Covers: Boom Cover, cockpit cover, wheel Cover

Deck Gear: Full Harken fit out

Water (Potable) Capacity (l): 450l

Drive Type: Sail Drive

Engine room: Enclosed

Fuel Tank: 120L Stainless Steel

Propeller: 3 blade folding Gori

Steering system: Aluminium wheel with integrated Raymarine  
Auto pilot B&G quadrant

Accommodation: Six bunks with two removable pipe cots

Showers: One

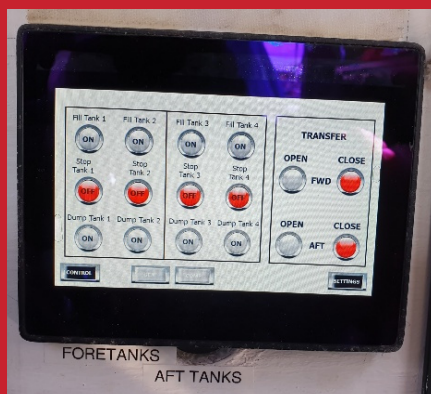
Toilet: JABSCO electric toilet sea water flush

Refrigeration: Opening 12V Built in fridge

Sink: Single Stainless Steel sink

Galley: Microwave, NESPRESSO coffee machine, Pie warmer

Anchor/Winch: 2 x Anchor with chain and warp



Northshore Marine Group  
4/16 Mitala Street  
Newport NSW 2106  
Dealer: 2PS19805

# Specifications

- Bilge Pump:** Electric and manual
- Deck Gear:** 2 x Harken electric cabintop winches, 2 x Harken Electric primary winches and 2 x Harken 57 mainsheet winches, x Spinlock Jammers
- Mast/Rigging:** Aluminum twin swept spreader rig. Aluminum boom. 1x19 wire. Bow sprit with integrated tack lines, self tacking jib system (currently not fitted)  
1 x Harken Mk111 and 1 x Harken mkIV structural furlers. Hydraulic Backstay adjuster.
- Electrics:** Fisher Panda Generator. Inverter/charger, Lithium Ion house batteries, AC panel. 12V LED interior lighting. LED Nav lights.
- Electronics/Navigation:**  
Raymarine GPS chart plotter, integrated Sat phone. GPS antenna on deck, AIS Class B transponder linked to chart plotter.  
Garmin Instruments, Auto Pilot, B&G control unit & Flux Gate Gyro Compass. Compass at helm.
- Safety:** AYF Cat 1 compliance
- Radio:** HF, VHF. Antenna for VHF, FM and AIS
- Feature:** Air conditioning



# Sail Inventory

(Updated 06/07/21)

## **Upwind Sails**

Code 1 jib/Genoa twa 35 to 90 tws 5 knot to 15 knot  
Panelled Carbon laminated sail.

Code 1.5 Jib twa 40 to 90 tws 12 to 18 knots  
Panelled Carbon Laminated Sail

Code 1.5 Jib  
Ex TP52 Norths 3Di - 66m<sup>2</sup>

Code 2.5 Jib  
Ex TP52 Norths 3Di - 64m<sup>2</sup>

Code 3 blade twa 40 to 90 tws 18 knot to 25 knot  
Carbon Millenium String sail with white taffeta.

Code 4 Heavy weather jib. twa 35 to 90, tws 25 to 35 knots  
Carbon D4 String Sail. Black Tafetta, Strop at top – not full hoist

Storm jib twa 45 to 90 tws 35 to 60 knots  
Orange Dacron, with hanks.

Code 0 Upwind, twa 45 to 120 tws 10 knot to 20 knot  
Carbon String Sail. On furler, free flying. Uses 2 to 1 Halyard and 2 to 1 tack line.

Downwind Code 0, lightweight. Carbon and Technora Panelled. Flown from end of sprit.

Ex TP52 Jib - J2. For twilights etc. String Sail

## **Mainsails**

Regatta Offshore Mainsail – Carbon D4 String Sail. Black Taffeta

Workhorse Offshore Mainsail – Carbon String Sail, White Taffeta.

Storm Trisail twa 35 to 90 tws 50 to 60 + knots. Orange Dacron

## **Downwind Sails**

A2 twa 120 to 170 tws 10 knot to 18 knot. White, biggest chute on boat. 260 m<sup>2</sup>

A2.5 Heavier cloth than A2. 120 to 170tws (140 to 150 twa). 8 to 20 knots  
240m<sup>2</sup>

A3(A) twa 120 to 160 tws (125-138 twa) 18 knot to 25 knot depending on sea way. Blue. 230 m<sup>2</sup>

A3(B) Norths, Practice Chute. White

A4 twa 120 to 160 (138-160twa) 20 knot to 30 knot tws depending on sea way.  
Blue 207 m<sup>2</sup>

A5 (A) twa 120 to 160 (120-130twa) tws 25 knot to 35 knot. White 170 m<sup>2</sup>

A5 (B) Also white. Not full hoist. 155 m<sup>2</sup>

Genoa Staysail twa 80 to 120 tws 15/18 to 25 knots. Carbon String sail.  
On furler. Set at midpoint on foredeck.

Spinnaker staysail twa 130 to 170 tws 15knot to 25 knot.

## **Other Sails**

Blast Reacher (recut Code O) twa 80, to 120 tws 15/18 to 25 knots

Paneled Code Zero laminate. On furler.

Dacron Delivery Genoa

Dacron Delivery Main

Dacron Delivery Staysail.



Northshore Marine Group  
4/16 Mitala Street  
Newport NSW 2106  
Dealer: 2PS19805

Heath Walters  
0417 200 804  
[hwnsmsg@gmail.com](mailto:hwnsmsg@gmail.com)

Chris Links  
0410 681 997  
[clnsmsg@gmail.com](mailto:clnsmsg@gmail.com)