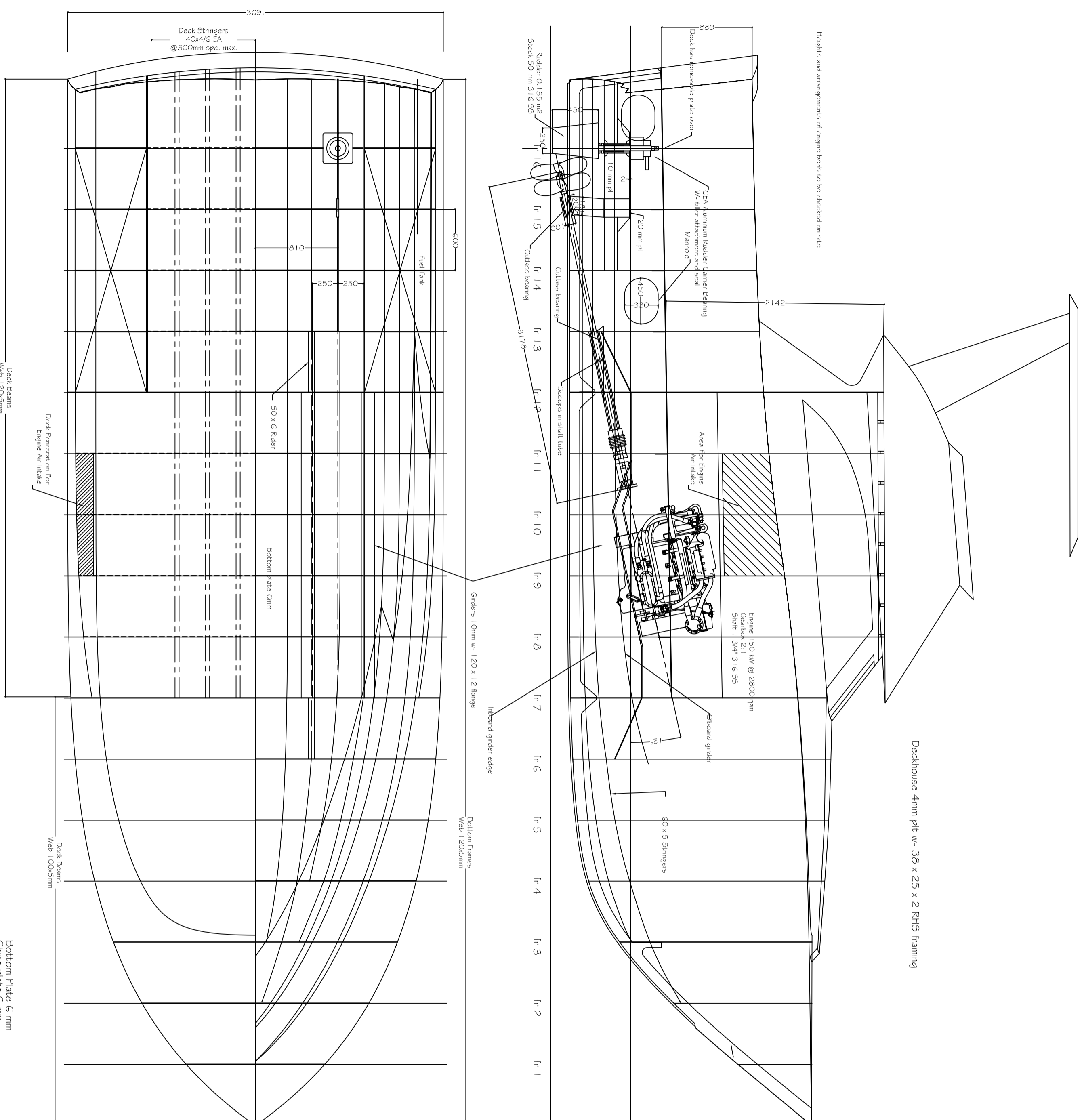


| Rev. No. | Amendment | Initial | Date |
|----------|-----------|---------|------|
|          |           |         |      |

Scanlings designed to comply with the requirements of USL Code for 2C vessel

- Bottom plate 6 mm
- Chine plate 6 mm
- Side plates 5 mm
- Frames 120 x 5 FB @ 600 spacing
- Bottom stringers 60 x 5 FB



Hull Plan

Deck Plan

Original Drawn by:  
Sirius Design and Marine Pty Ltd

|               |             |                       |      |
|---------------|-------------|-----------------------|------|
| SHEET TITLE : |             | Hull Construction 1   |      |
| VESSEL :      |             | Project 168: SDM 10.5 |      |
| DWG No.:      | P168-02-001 | SCALE :               | 1/30 |
| DATE :        | 26/02/03    | DRAWN :               | SDM  |
|               |             | DESIGNED :            | SDM  |

Shed 2, Brisbane Ship Lites, 28 Wynna Court, Hemmant  
Brisbane, 4174, PH: 07-3348 6035, FAX: 07 3348 6047  
Email: scalliedesign@opervnet.com.au