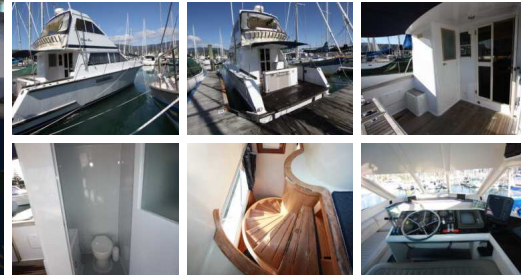


\$295,000.00



Specifications

Construction

Year	1994
Make	Pelin
Model	Eclipse
Style	Launch
Stock Number	9863

Exterior	Double Diagonal Kauri Glassed
Builder	Oliver Boat Builders, Tauranga
Loa Approx	13.72
Beam Approx	4.27
Draft Approx	.91
Hull Type	Mono
Transom	Walk-Thru

Engine

Tankage

Enginemake	Twin Caterpillar 311hp
Engine Year	1994
Engine Fuel	Diesel
Drive System	Shaft
Comment	Recent Full Motor Service, Including Turbos, Each Engine Has 1000 CCA Start Batteries, 400 Amp Hour 12v Capacity

Fuel Capacity Approx	1400
Fuel Tank	2 Stainless Steel
Water Capacity Approx	500
Water Tank	2 Stainless Steel

Interior

Accessories

Berths	Accommodation For 6, Port Side Double Cabin With Ensuite, Double And 2 Single Berths Forward
Headroom	Full
Toilet	2 Marine Toilets With Holding Tanks, Cockpit Toilet And Shower
Cooking	Force 10 Gas 3 Burner Oven And Grill, Microwave
Cabin No	2
Saloon	Large Seating Area, Bar, Tv, Stereo System

Safety Equipment	Bilge Pumps, Lifejackets, Flares, EPIRB
Navigation Gear	Compass, VHF Radio, AP50 Autopilot, JRC Radar, Furuno Fishfinder, GPS Chartplotter, JRC Colour Sounder
Ground Tackle	50lb Plough On 65m Of 10ml Chain, 40lb Plough On 200m Warp, Danforth & Stainless Grapel
Capstan	Electric



1994 Pelin Eclipse

1994 Pelin Eclipse Launch, built by Oliver Boat Builders Tauranga, double diagonal Kauri timber glassed construction, twin 311hp Caterpillar diesel engines (1994). 50lb and 40lb Plough anchors, chain, warps, electric capstan. Interior features 2 cabin layout, double master cabin with ensuite, double and 2 single berths in forward cabin, 3 marine toilets with holding tanks (1 in cockpit), 3 showers including cockpit shower. A well equipped galley with Iceco 12v fridge, hot water system, microwave, Force 10 gas 3 burner grill and oven, galley gear, bar, Uniden TV, stereo system, clock, barometer. Other features: 15000w inverter, game rigged, live bait tanks, internal access to flybridge, dual station, large sliding windows, windscreen wipers, windscreen cover, large cockpit, 2nd fridge and freezer in cockpit, walk-thru transom onto large boarding platform, boarding ladder, 3.2m RIB, 4hp 4 stroke Yamaha O/B. Flybridge cover and clears are being replaced. Vessel berthed in Nelson, berth available, Sole agency.