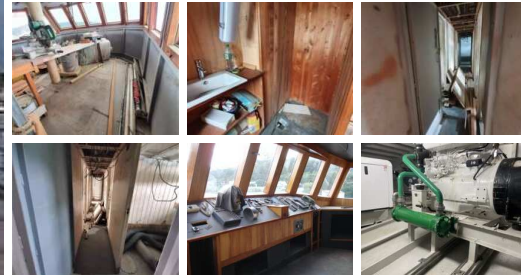


MV Explorer - Steel 26m Passenger Vessel

\$750,000.00



Specifications

Construction

Year	1980
Make	Launch
Style	Steel 26m
Stock Number	9879

Exterior	Welded Steel
Loa Approx	35.97
Beam Approx	7.04
Draft Approx	1.17
Hull Type	Displacement
Transom	Curved Step Down Transom

Engine

Tankage

Enginemade	Detriot
Engine Model	8V71
Engine Year	1981
Engine Fuel	Diesel

Fuel Capacity Approx	5000
Water Capacity Approx	9000

Interior

Accessories

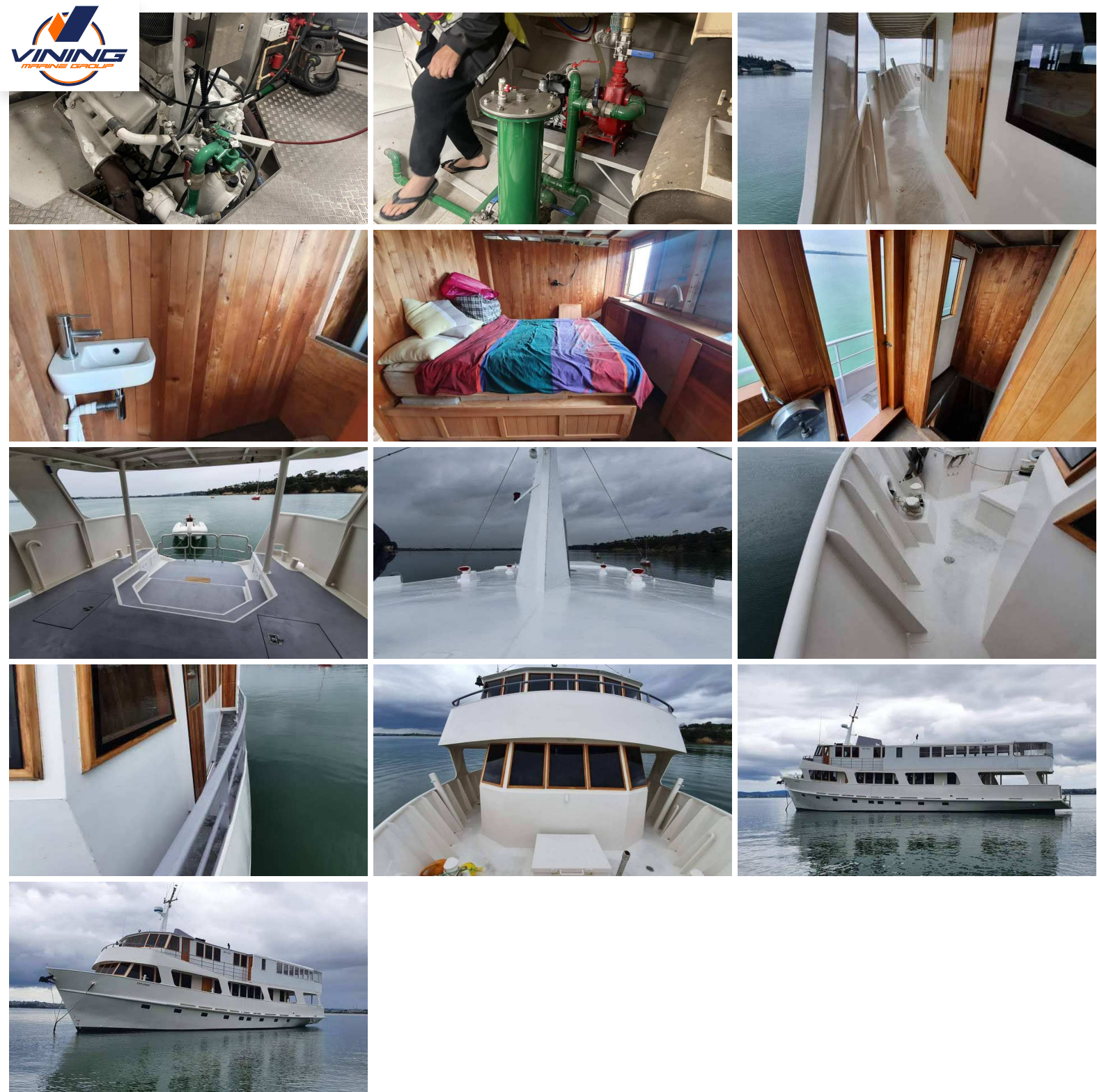
Berths	20 Passengers, 7 X Doubles, 1 Bunk Room With 2 Beds. Crew Accom 1 Bunk Room 4 Beds
Headroom	Full
Toilet	6
Cooking	Full Commercial Galley
Cabin No	9

Safety Equipment	GPS Enabled Flares, Life Rafts, Life Rings, Life Jacketsm Fire Alarms On All Floors, CO2 Fire Extinguisher System In Engine Room, Generator Room And Battery/Pump Room. High Pressure Salt Water Delivery System At All Levels To Survey Requirements. VHF Marine Radio ICOM, C403 And ICOM M8
Navigation Gear	Furuno GPS GP32, Radar, SSB ICOM EC-78, Furuno FCV 581 Colour Fish Finder, 6" Saura Mag Compass, Auto Pilot
Ground Tackle	16mm Galvanised Anchor - 100 Meters To Survey Requirements
Capstan	Hydraulic Nissan

Talk to the Listing Broker
Contact The Listing Broker

Dave Vincent

021 0271 1365
davev@viningmarine.co.nz
Opuia & Northland



MV Explorer - Steel 26m Passenger Vessel

MV Explorer; Ideal Home on the water. In current survey for 100 day or 20 overnight. Separate Accommodation decks and Entertainment/lounge decks lending herself to being an exceptionally good business opportunity or equally a live-aboard with income to own and operate. MV Explorer is in excellent condition with all the hard work completed - this includes full sand blasting inside and out with an Altex two pot epoxy paint system applied for long life, new electrics including wiring to Maritime NZ Electrical Survey specs, new plumbing including a full Stainless steel salt water fire system to all levels, full John Guest 'Speed fit' plumbing in hot and cold water to all levels, all new PVC black water and drainage systems installed. (lots more great features full inventory available on request) The vessel currently moored in Upper Harbour Auckland NZ has completed her out of water checks (May 2021) having had a cleaned bottom with all new antifoul paint, all anodes checked and replaced if required plus all propellers and water intakes cleaned, and prop speed coatings applied. A new purchaser now has the opportunity to contribute to the final internal layout plans and material designing, finishing schemes etc to take the vessel to the next level. Listing Broker-Dave Vincent 021-027-11365