



2023 HUDSON BAY 34 OB

AVAILABLE DECEMBER 2022



clippermotoryachts.com

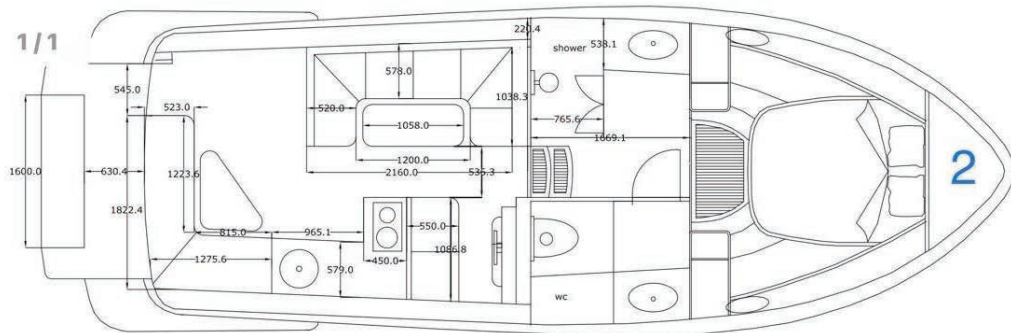
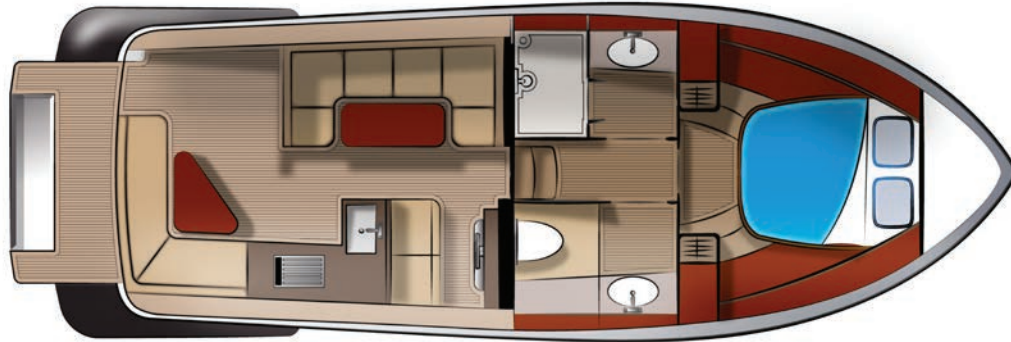
HUDSON BAY 34 OB

SIDE PROFILES



HUDSON BAY 34 OB

FLOOR PLANS



SPECIFICATIONS

Length overall (incl. swim platform & bow roller)	11.3m	37ft
Beam OA	3.3m	10ft 8in
Maximum Draft	0.9m	3ft
Displacement	5,500kg	5.5T
Fuel Capacity	600 litres	158 gallons
Water Capacity	300 litres	80 gallons
Holding Tank Capacity	150 litres	40 gallons
Standard Engines	None	
Bow Thruster	Included	
Generator	Onan 4kva	

Note: Specifications are estimates only and are subject to change



HUDSON BAY 34 OB

THE BUILD



HUDSON BAY 34 OB



HUDSON BAY 34 OB

OVERVIEW

Our new outboard powered THIRTY FOUR is superbly designed in the "down east lobster style" of sedans with a modern flair. She will turn heads at any marina or anchorage and is powered by twin outboards of your choosing.

Included for your comfort is a 4kw generator and air conditioning along with a full Raymarine electronics package, Corian benchtops and ultra-leather upholstery.

A shaded saloon and cockpit area on one level with the outdoor galley for ease of entertaining and a large L shaped cockpit seating plan.

Full owners cabin forward with double bed and hanging lockers with additional storage and hull side windows

An exceptional mix of contemporary layout and features along with a timeless elegance makes the Hudson Bay THIRTY FOUR a unique new motor yacht to own.

STANDARD SPECIFICATIONS

CONSTRUCTION

- White superstructure hull color

ENGINE and MECHANICAL INSTALLATIONS

- Engine guages
- Heavy engine room insulation
- Engine room ventilation
- Emergency manual bilge pump
- Hydraulic steering
- Hand-made steering wheel
- Waste water system
- Bow thruster 60 kgf – Vetus, Side power or Maxpower
- Raymarine or Simrad 12" GPS, plotter/fishfinder
- Air conditioning in cabins and saloon

Tank capacities are total volume, usable capacity will vary due to boat trim and sea state. Do not rely on more than 90% of tank volume being usable

MAIN DECK

- Mast with navigation lights
- Teak or walnut table
- Teak or walnut cockpit floors
- L shaped seating with teak cockpit table fixed
- Anchor - stainless steel 18kg +35m galvanized chain
- Open cockpit upholstery
- Self draining cockpit

- Shower recessed with transom
- Swimming platform with ladder
- Bimini in stern with stainless steel extendable awning
- Stainless steel equipment
- 3rd shower in cockpit near door

ELECTRICAL and NAVIGATION EQUIPMENT

- LED lighting throughout
- 4kva genset with remote start panel
- 12 volt electric systems
- Electric pressurised hot/cold water system
- 3 x 120 amp/h batteries – maintenance free
- 220 volt shore connections with battery charger
- 3 x automatic electrical bilge pumps
- 4 speakers
- 2 x windshield wipers with water spray (one part glass)
- Navigation lights
- Hot water boiler – 12 volt
- Waste water pump
- Compass
- Horn
- Anchor windlass 1000w including chain counter
- Dashboard with full equipment



HUDSON BAY 34 OB

SALOON/GALLEY

- Square stainless steel sink – Corian flush cover
- Corian table top
- 2 Burner electric cooktop
- 42L refrigerator – Waeco
- Microwave

ACCOMMODATION and INTERIOR LAYOUT

- Master cabin with queen bed
- Head with electric toilet and stainless steel sink
- Corian counter top in head
- 4 x portholes in stainless steel
- Cabin and cockpit upholstery Silvertex and Ultra leather
- Aniegre cabin floors
- Sunroof above saloon and master cabin

FIRE FIGHTING EQUIPMENT

- Automatic/manual engine room fire fighting system
- Three portable hand held extinguishers
- Fire blanket in Galley

MISCELLANEOUS

- Zinc anodes on rudders, propeller shafts, transom and trim tabs
- Mooring lines x 3
- Fenders x 3
- Safety equipment including EPIRB, life jackets, flares and V sheet
- Black boot stripe approx. 130mm with 25mm gap to black antifouling
- Antifouling
- Owners manual

Clipper Motor Yachts Australia Pty Ltd reserves the right to alter prices and specifications subject to currency exchange rates. Please check with Clipper Motor Yachts Australia Pty Ltd to confirm current validity. Clipper Motor Yachts Australia Pty Ltd will not be liable "in contract or otherwise" for any loss resulting from the inaccuracy of any information contained in this document. Safety equipment – each state or Territory has different safety equipment standards it is important to ensure the requirements in your jurisdiction are met prior to the vessel being used. Appropriate deposits paid to Clipper Motor Yachts Australia Pty Ltd at time of order will establish firm pricing. [5297 5/2022]

** All prices quoted etc are ex Clipper Motor Yachts Australia office at The Boat Shed at The Boat Works Marina, 199 Beattie Rd. Coomera, Queensland, Australia.

**** Denotes tank capacity. For useable capacity do not rely on more than 90% of tank capacity. Actual useable capacity will vary according to boat trim and sea state.





SHOWROOM : The Boat Shed at The Boat Works Marina, 199 Beattie Rd. Coomera Qld 4209

CLIPPER MOTOR YACHTS : Brett Thurley : 0419 788 000 : brett@clippermotoryachts.com

Pete Foster : 0452 262 877 : peter@clippermotoryachts.com

CLIPPERMOTORYACHTS.COM