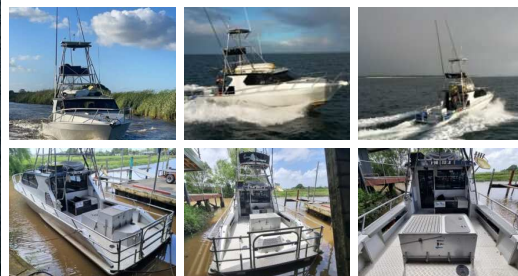


11m Chris Knight Game Fisherman's Dream

\$380,000.00



Specifications

Year	2016
Make	Custom Built
Model	11m
Style	Launch
Stock Number	9989
Comment	This Vessel Has Some Very Interesting Ideas But To Find Them Out You Will Need To View The Boat.

Construction

Hull Construction	Alloy
Builder	Chris Knight
Loa Approx	11
Beam Approx	3.3
Draft Approx	0.7
Hull Type	Mono
Transom	Open

Engine

Enginemake	Volvo Penta
Engine Model	D6-400DP
Engine Year	2015
Hours Approx	1000
Engine Fuel	Diesel
Drive System	Duo-Prop Stern Leg
Comment	Serviced 100hrs Ago

Tankage

Fuel Capacity Approx	1000
Fuel Tank	Alloy
Water Capacity Approx	230
Water Tank	Alloy

Interior

Berths	4
Headroom	1.98
Toilet	1 X Electric With Shower With Hot Water Cylinder
Cooking	2 Burner With Oven + Grill, BBQ
Cabin No	1
Saloon	Electric Fridge And Freezer, Coffee Table, Fusion Radio, LED Lighting

Accessories

Safety Equipment	EPIRB, VHF Radio, Horn, Life Jackets, Duckboard, 1 X Electric + 1 X Manual Bilge Pumps, Flares, First Aid Kit
Navigation Gear	Furuno Chart Plotter, Fish Finder, Compass, Depth Sounder, GPS, Furuno Autopilot
Ground Tackle	Rocna Anchor With 10m Chain And 100m Rope, Anchor / Deck Wash
Capstan	Yes, With It's Own Battery

Talk to the Listing Broker
Contact The Listing Broker

Peter Rosoman

021 0293 7769
pete@viningmarine.co.nz
Opua, Bay of Islands



11m Chris Knight Game Fisherman's Dream

This 11m overall alloy fishing machine was designed and built by Chris Knight of Knight Engineering "Awanui" for his own personal use and launched in 2015 for fishing the far north and 3 Kings area. She is powered by a single 400hp D6-400DP Volvo Diesel motor (only 1,000hrs) Fitted with a Volvo Duo Prop Stern Leg. This gives a cruising speed of 22knots with a top speed of 30knots. There is comfortable accommodation for 4 passengers with a large working platform and open transom for ease of boarding those 1,000lb Blue and Black Marlin and lots of Stripies that cruise the King bank, Middlesex Reef and the 36 Mile grounds. Not forgetting bottom fishing for which she is equipped with an electric line hauler for persuading those huge Bass, Bluenose and Hapuka up from the deep. A large electric freezer compartment allows for keeping the catch in top condition to feed your friends and family upon your return. This vessel has some very interesting ideas but to find them out you will need to view the boat. If you seriously like fishing the outer reaches then this boat will suit you. (Please note: Any fishing tackle shown in any photos is NOT included in this sale.)

Features

- 2 house + 1 start battery,
- Solar panel,
- Underwater lights
- Rod holders,
- Live bait tank,
- Dual helm control,
- Flybridge awning,
- Electric line hauler,
- Electric reel plugs, Game poles,
- Tuna tower + tubes
- Southern Pacific dingy + 2hp Yamaha outboard

