

 NAUTITECH



COMING
SOON

48

DON'T MISS YOUR DREAM!

When ultimate comfort is combined with elegance and the pleasure of sailing, your travels become a true dream. For this new model, Nautitech raises the standards of comfort and sensations even higher.

THE NAUTITECH TEAM



CHEDAL-ANGLAY



NEW HORIZON

48

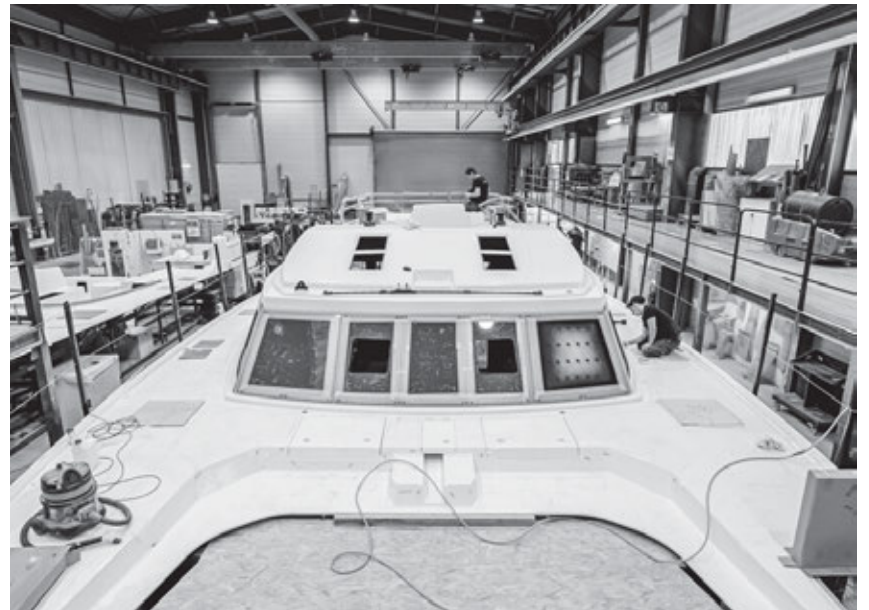




FRENCH SAVOIR-FAIRE

A combination of performance and design, this new model represents French style and know-how. To bring together expertise and unforgettable sailing experiences, we have created a design with unique and distinctive elements which will open up new horizons.







GABARIT
EAU
NOIR

GABARIT
Moulin
LANCE

GABARIT
PANNEAU POINT
AVANT

NE PAS JETER
SI POSSIB'

GABARIT
TRUCK
SIFKAN
NE PAS JETER
COOPER

PANNEAU
POINT AVANT





**A Constant
search for
excellence
to design
an exceptional
yacht.**

The choice of
materials and expert
design knowledge
bring an elegant and
signature to each
living space.







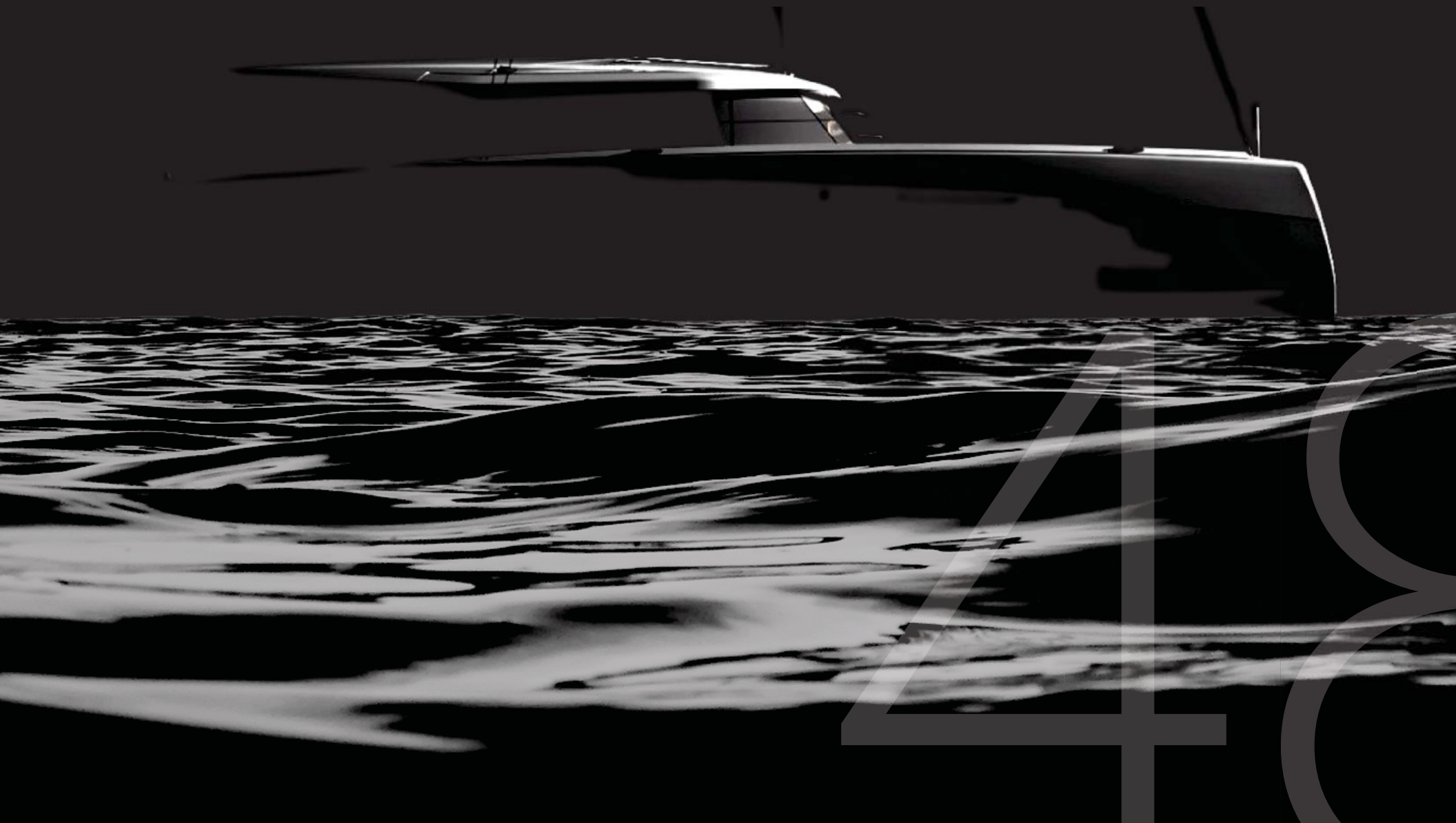


A WORLD
OF POSSIBILITIES

CONSTANTLY REINVENTING

The signature of a yacht whose only limits is your own imagination.

The desire to capture the emotion of sailing in all its purity to create a deep and intense symbiosis between sailor and catamaran.



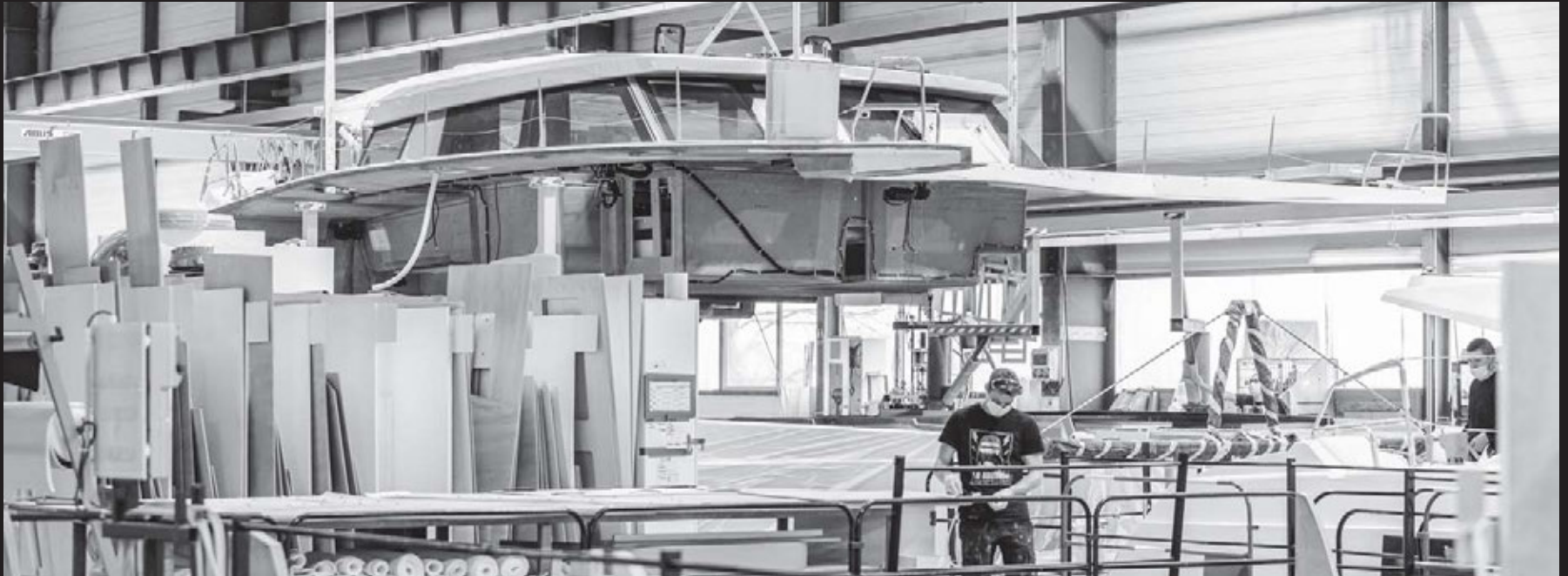


| SAIL THE WORLD BEYOND YOUR DREAMS!





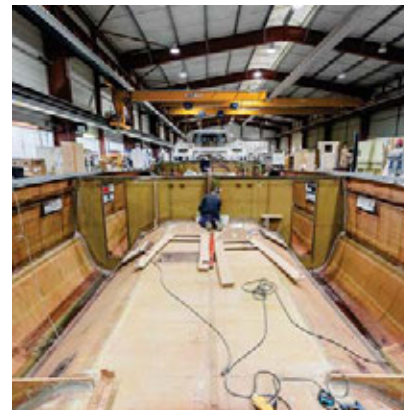
AN ARCHITECTURE IN MOTION



Achieving a balance between volume and light, comfort and performance. Guided by the materials and shapes, we have created a modular yacht that can be adapted to its owners and their sailing program.







Nautitech creates multihull sailing boats that combine strength, design, and performance. The tone is set for this new model, it is a relationship between creativity and technology. Designers, architects, engineers, and technicians are working in close collaboration to create a unique model, in the image of its owners. Its signature is found in the curve of the hull, its finesse, attention to detail and the optimisation of space.





AWAKEN YOUR SENSES


It is the search and realization of a catamaran that will transform your voyage.

The sound of the waves as they pass the hulls, the wind as it meets the sails, the feel of softwood under your fingers, the smell of leather and sea spray.

Designed with ideal proportions, this new yacht will awaken all your senses.







48 FEET

of elegance and comfort

QUALITY AS A GUIDING PRINCIPLE

From design to manufacture, all choices have been guided by the desire to offer a top-of-the-range boat where the term "Quality" takes on its full meaning.



As for manufacturing, we use our know-how in terms of infusion to guarantee watertightness and robustness without fault to our ships. The mastery of the manufacturing process and the attention to details are Nautitech's true assets and a guarantee of quality, durability and above all safety.





Exterior design by Marc Lombard Yacht Design Group

UNMATCHED SAILING SENSATION

The shape of the hulls has been studied in order to offer thinner hulls to limit the wet surface, which, coupled with a high bridge deck clearance height give the boat an incomparable comfort at sea.

An optimized hydrodynamic bottom and thin hulls below the waterline combined with a stepped hull chines to widen the hull and provide space above the waterline. The hull with its inverted bow and forward rake ensures a balance boat

The double helm station is a signature feature of the Open Line and the sailor's choice. These two ideal helming positions provided unobstructed view of the sails trim, helming and still being part of the entertainment area





SUBTLE DETAILS FOR A PERFECT HARMONY

A modern and elegant atmosphere created in collaboration with the designer Christophe Chedal-Anglay. The 48 Open is available in standard light walnut and optional oak finishing to match with all tastes.

A HIGH-RANGE STANDARD TO OFFER A SOPHISTICATED INTERIOR

An iconic bar in the heart of the living area. Close to the mast and located at the center of gravity of the boat, it is where people will join together, discuss the route, and probably "elevate their dream" with enthusiasm. The place that naturally attracts everyone on board.



AN ELEGANT SUITE WITH INCOMPARABLE FINISHING QUALITIES

| Enjoy the comfort from this spacious and luxurious owner suite with its own integrated dressing.





2 cabins 2 heads
& Smartroom® FLEXIBILITY



Owner's suite
3 cabins 3 heads



4 cabins 4 heads

My SmartRoom®

The starboard front area has been designed to meet your sailing schedules. Whether in the Utility version, designed for owners who are setting sail for a long adventure, or in the Flexibility version, the SmartRoom® is there to meet your needs for an even more personalised approach to your dream.



3 cabins 3 heads
& Smartroom® FLEXIBILITY



3 cabins 3 heads
& Smartroom® UTILITY

5 LAYOUTS
ARE AVAILABLE,
THE CHOICE
IS YOURS!



MAIN DIMENSIONS

48 OPEN

Length overall	14,6m	47'9
Beam	7,97m	26'2
Draft	1,55m	5'1
Air Draft	22,95m	75'4
Displacement (mlc)	13,5t	729 768 lbs
Engines, standard	2 x 60 HP	D2-60 Volvo
Engines, option	2 x 75 HP	D2-75 Volvo
Fuel tank capacity	2 x 300L	2 x 79 US gal
Fresh water tank capacity	2 x 300L	2 x 79 US gal
Mainsail, standard	85m ²	915 sq ft
Self-tacking Solent, standard	42,5m ²	455 sq ft





48

www.nautitechcatamarans.com
Stay tuned and register to our dedicated
48 OPEN newsletter