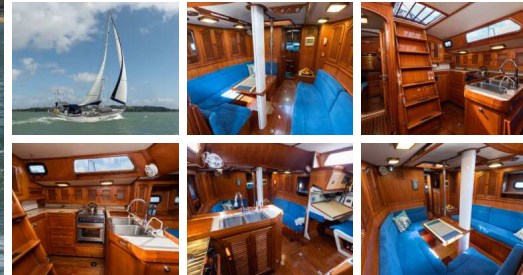


**\$245,000.00**



### Specifications

### Construction

Year	1981
Make	Robert Perry
Model	Lafitte 44
Style	Cutter Rigged Canoe Stern
Stock Number	10059
Comment	Elegant Comfort, Ocean Beating, Well Appointed Capable Cruiser

Hull Construction	GRP
Builder	Lafitte Yachts/Chung Hwa Taiwan
Loa Approx	13.5
Beam Approx	3.86
Draft Approx	2.1
Hull Type	Monohull, Cruising Fin And Skeg Hung Rudder
Transom	Enclosed

### Engine

### Tankage

Enginemade	Yanmar
Engine Model	4JH5E
Engine Year	2012
Hours Approx	3780
Engine Fuel	Diesel
Drive System	Shaft
Comment	Well Maintained And Cared For, Serviced Every 150hrs, Last Service 70hrs Ago

Fuel Capacity Approx	460
Fuel Tank	2 X Stainless Steel
Water Capacity Approx	300
Water Tank	2 X Stainless Steel

### Interior

### Accessories

Berths	5 (+ 2 In Saloon)
Headroom	1.98
Toilet	1 X Electric Flush, 1 X Manual
Cooking	Stove, 3 Burner Hob, Grill And Microwave
Cabin No	3
Saloon	1 X With Table Seating 4 To 6

Safety Equipment	Raymarine AIS, Radar, ICOM SSB With Modem, Standard Horizon VHF With AIS, Horseshoe Rings, Throw Lines, Danbuoy, Flares (OOD), Life Raft (OOD) EPIRB (X 2), 2 X Electric Bilge Pumps (Auto) + Manual Bilge Pump
Navigation Gear	Raymarine Chart Plotter, Radar, Depth Sounder, GPS And Boat Speed And Wind Instruments
Ground Tackle	Rocna 25kg With 100m Of 10mm Chain New 2017, Mantus 30kg 30m Chain And 60M Warp
Capstan	Lofrans Togress New 2017

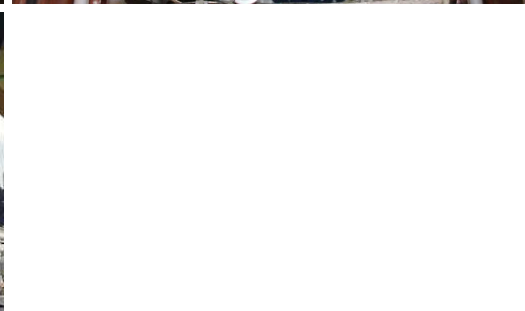
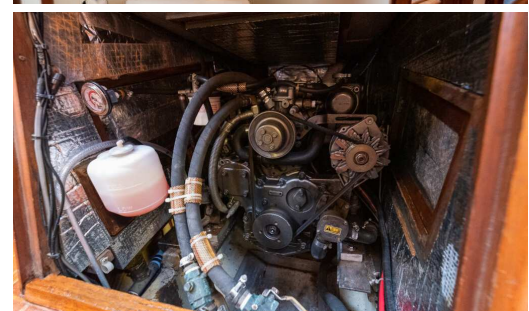
### Rig

Rig Details	Masthead Cutter Rigged, Alloy Mast With Twin Spreaders
Rigging	Stainless Steel Rigging In Good Condition Throughout New 2018
Reefing	Mainsail With Third Reef And Harken Furler On Forestay
Spars	Forespar Alloy Telescoping
Sails	Mainsail Very Good New 2018, Headsails Very Good New 2018, Gennaker Good Little Used 14 Years, Storm Jib Unused 10+ Years. Cutter Rig With Detachable Inner Forestay With Hanked On Staysail Little Used New 2018 Spare 90% Genoa

**Talk to the Listing Broker**  
Contact The Listing Broker

**Rob White**

027 332 2535  
whangarei@viningmarine.co.nz  
Whangarei



## Lafitte 44 Blue Water Cruiser

**Price Reduction, Now \$245,000** Designed by the renowned Robert Perry, Three Sheets is a prime example of one of Bob Perry's quality cruising designs. She has the space below to amaze any offshore sailor or inshore live-a-board, the headroom to handle the tallest of sailor and the quality of interior joinery that isn't found in many of today's yachts. The sailing ability of Perry designs are never under question. The Lafitte 44 was built as an upgrade on the smaller Perry designs of the time while at the same time incorporating the strength of build to handle the elements of the open sea. Her condition today reflects this quality build. "We specified each and every joiner-work detail on the boat," said Bob Perry. "Lafitte would use only the best components and no expense was spared to make the boat top quality." Three Sheets had a complete refit in Turkey in 2018, new electronics and a host of upgrades including a water maker. Following the refit Three Sheets crossed the Atlantic to the Windies, spent some time there before travelling through the Panama Canal and across the Pacific to New Zealand where she now is berthed. Expertly prepared for blue water crossings, solar and wind generator supported by a portable petrol generator, this beautiful Lafitte 44 has everything needed, including a wealth of spares, to undertake her next adventure. Spacious, comfortable, and well appointed, Three Sheets is ready for new owners. Tax and Duty paid in New Zealand, the asking price includes everything on the inventory list, much of it near new, recently serviced and in great condition. Berthed at Marsden Cove this is a desirable blue water cruiser.

## Features

Radar, AIS and WiFi enabled Raymarine Chartplotter coupled with SSB and Pactor Modem, VHF and Iridium Go aerial, fully prepared for big journeys. Honda Generator available in support of the wind generator and solar panels. The water maker is there for the longer journeys. Dinghy with cover and outboard with crane. Lots and lots of spare parts and lots of tools.