

# Oceanis



## OCEANIS 37.1 A LEGACY OF HARMONY

LE GRAND LARGE, GIVRAND, JULY 2023



The new 37 footer capitalizes on the innovations of the seventh generation of Oceanis cruisers, which it finishes. The eighth model launched by BENETEAU since 2017 completes the line – a market gold reference.

The Oceanis 37.1 will be premiered at the Cannes Yachting Festival next September. Visitors will see a remarkably versatile, harmonious cruiser. It is easy to sail and to use, and also very comfortable... A true Oceanis!

Renewing a model is always a challenge, particularly when it is one of the best sellers on the market, which the Oceanis 38.1 was in its 9 years on the water. The brief Marc Lombard and Nauta Design were given contained two key features: Greater volume and improved performance! While retaining the ease of use that has been a hallmark of the Oceanis cruisers since they were first launched in 1986.

### PRESS CONTACT

Luc JOËSSEL  
Tel. +33 (0) 6 61 92 78 58  
l.joessel@beneteau.fr

[WWW.BENETEAU.COM](http://WWW.BENETEAU.COM)



**BENETEAU**

# Oceanis

## INTELLIGENTLY DESIGNED

The Oceanis 37.1 interior is remarkable, something you would not guess from its elegant profile. The generous space in the saloon is nearly as large as a 40 footer! The hull is flared with a rib that maintains fluid lines below water and achieves greater power and stability. It also improves the hull rigidity, controlling the weight well, and providing greater volume inside the bow.



The Oceanis 37.1 cruiser's saloon is offset to port, and has plenty of room with a sofa for relaxing and a comfortable table for six. It faces the lengthwise galley, where the crew can go about their business without getting in the way. The guests are not disturbed by the passageway to the fore cabin, where you will find a resting space with a breathtaking view of the horizon through the large portholes integrated in the hull side. In the two-bathroom version, the bed is positioned against the starboard hull and is of generous proportions. And what about the stern? It offers top levels of comfort. In the standard version, there is a king-size double bed and a vast sail locker aft of the bathroom, which can be accessed from inside or out. And we find good-sized bedding even in the 3-cabin version.



### PRESS CONTACT

Luc JOËSSEL

Tel. +33 (0) 6 61 92 78 58

[l.joessel@beneteau.fr](mailto:l.joessel@beneteau.fr)

[WWW.BENETEAU.COM](http://WWW.BENETEAU.COM)

# Oceanis



**BENETEAU**



The sensation of space continues around the central table in the vast and extremely open cockpit over 3 metres long. Bathing at anchor is a must! Once the helm seats have been lifted, the wide walkway opens onto a lowered bathing platform, guaranteeing safety and perfect for a pleasant swim.

## A REALLY CONTEMPORARY CRUISER

The outdoor space is very open, with an absence of backstay – a layout used successfully on the Oceanis 30.1 and 34.1. The rig is tall (in-mast furling system on option) and promise excellent performances from the Oceanis 37.1. In the standard version with a self-tacking jib, focus has been put on making things easier, while sailors who enjoy lively boats will love the First Line version with the square-top mainsail and furling genoa (22% additional area). To retain easy handling shorthanded, all the rigging is brought back to the two aft winches. Only the halyards remain grouped around the coachroof. All the instruments, including a 7-inch plotter can be found on the starboard helm console.



### PRESS CONTACT

Luc JOËSSEL

Tel. +33 (0) 6 61 92 78 58

[l.joessel@beneteau.fr](mailto:l.joessel@beneteau.fr)

[WWW.BENETEAU.COM](http://WWW.BENETEAU.COM)

# Oceanis



## SUSTAINABLE AND STYLISH

Iroko, a great alternative to teak coming from Africa, is used for the cockpit decking using a new assembly process, called Iro-Deck and perfected by BENETEAU. Each of strip of plywood decking is made up of several laminated layers, which guarantee a uniform colour, excellent sustainability and rule out the risk of cracks, which are frequent on solid wood decks. The Oceanis 37.1 meets the challenges of the times extremely well, and this can also be seen in its engine power. For a cruising programme on inland waterways carbon-free sailing is popular, which is why the Oceanis 37.1 is available with an electric motor with a 12 kW pod and 10 kWh batteries. Enough for a cruising range of 2 hours at 5 knots between two charges, all emission-free and in eco-friendly silence.



The Oceanis 37.1 will be world premiered at the Cannes Yachting Festival, from 12 to 17 September 2023, and premiered in the USA at Annapolis Sailboat Show, from 12 to 15 October 2023.

It will also be on show at the Grand Pavois in La Rochelle and at the boat shows of Genoa and Barcelona.

### PRESS CONTACT

Luc JOËSSEL

Tel. +33 (0) 6 61 92 78 58

[l.joessel@beneteau.fr](mailto:l.joessel@beneteau.fr)

[WWW.BENETEAU.COM](http://WWW.BENETEAU.COM)

# Oceanis



## PROVISIONAL SPECIFICATIONS

Length overall	11,93 m	39'2"
Hull length	10,99 m	36'1"
Waterline length	10,83 m	35'6"
Beam width	3,92 m	12'10"
Deep draught (cast iron)	2,10 m	6'11"
Deep ballast weight	1 800 kg	3,967 lbs
Shallow draught (cast iron)	1,63 m	5'4"
Shallow ballast weight	1 970 kg	4,342 lbs
Air draught	16,60 m	54'6"
Light displacement	6 864 kg	15,128 lbs
Fuel tank (standard)	130 L	34 US Gal
Fresh water capacity (standard)	355 L	94 US Gal
Engine power (standard)	40 CV	40 HP
Mainsail (standard)	37 m <sup>2</sup>	398 sq/ft
Furling mainsail (option)	31 m <sup>2</sup>	333 sq/ft
Self-tacking jib (standard)	23 m <sup>2</sup>	248 sq/ft
Furling genoa (110 %)	30 m <sup>2</sup>	323 sq/ft
Code 0	53 m <sup>2</sup>	570 sq/ft

## EC CERTIFICATION A8/B10/C10

## ARCHITECT / DESIGNER

Naval architect: MARC LOMBARD YACHT DESIGN GROUP

Deck and interior design: NAUTA DESIGN

### PRESS CONTACT

Luc JOËSSEL

Tel. +33 (0) 6 61 92 78 58

[l.joessel@beneteau.fr](mailto:l.joessel@beneteau.fr)

[WWW.BENETEAU.COM](http://WWW.BENETEAU.COM)

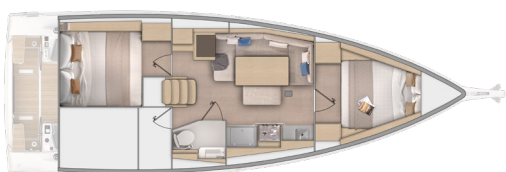
# Oceanis



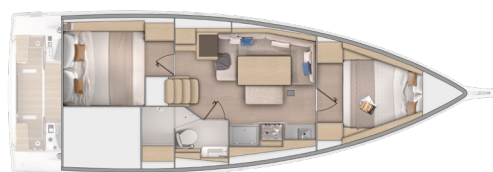
Profile



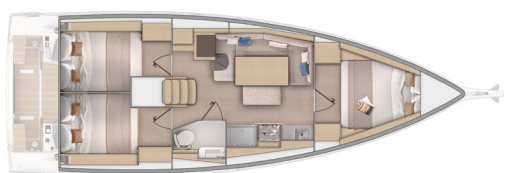
Deck



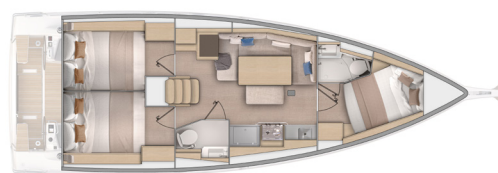
2 cabins / 1 head - Standard



2 cabins / 1 head - Shower



3 cabins / 1 head



3 cabins / 2 heads

## PRESS CONTACT

Luc JOËSSEL

Tel. +33 (0) 6 61 92 78 58

[l.joessel@beneteau.fr](mailto:l.joessel@beneteau.fr)

[WWW.BENETEAU.COM](http://WWW.BENETEAU.COM)