

AZIMUT
Grande

—S10—

AZIMUT
Grande



—S10—



SHAPED BY ITALIAN CREATIVITY

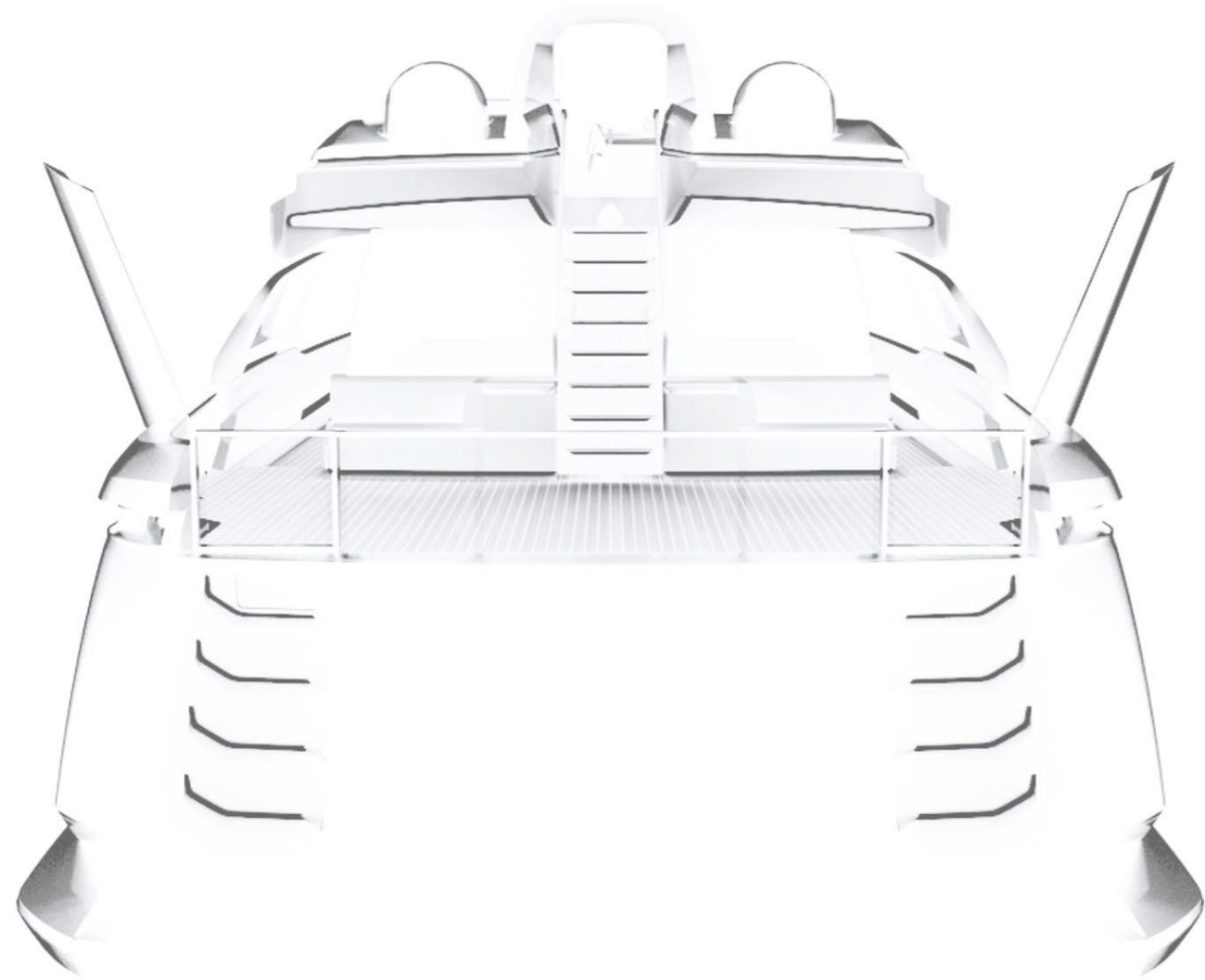
Completely revolutionising the open concept, the Azimut Grande S10 is the culmination of visionary thinking and design. From its sleek, sensual exterior lines to spacious, comfortable interior zones and the generously-proportioned external lounging areas, every detail has been inspired by a simple wish: to enable you to experience the joy of the yachting lifestyle, totally at one with the sea.

The exterior lines, designed by Alberto Mancini, contain surprising elements drawn from unconventional sources of inspiration when it comes to nautical design, whilst Francesco Guida's interiors harmoniously combine classic and contemporary style.

With abundant use of carbon fibre combined with state-of-the-art technology, the Azimut Grande S10 is the embodiment of striking modernity and represents yet another step in Azimut Yachts' relentless quest for innovation.



THE WONDER OF VISIONARY THINKING



With his archetypal eclectic approach, Alberto Mancini has drawn inspiration from delightfully different sources to create features which have never been seen before in yachts of this kind.

Taking cues from a modern villa, he has designed terraces leading down to the water, creating a three-deck layout with a surprisingly ample external area where your eye can freely roam the horizon.

He then translates the megasailer concept to deliver a type of patio, reminiscent of old sailing ships, which is discreetly located slightly forward and reached by low steps down from the deck.

Last, but most definitely not least, you will see the influence of car design in the shapes and choice of materials and the boat's sporty personality.

CREATIVITY HAS NO BARRIERS

Versatility and spaciousness are to the fore of the Grande S10 with the main deck delivering a unique living area concept for a sport boat of this size, in the form of a dedicated sun lounging area. This flows into a covered patio with two comfy sofas, which in turn leads to a dining room, the heart of the boat's innovative layout. During the day it can be completely opened up to merge into the outdoor zones, extending right through back to the sundeck. At its other end, a sliding door divides it from the indoor lounge for guests who prefer an air-conditioned environment. Once evening falls, this door can be opened up to create a large single space for dining and relaxing.



Cockpit view

GRANDE

S10





Access to the flybridge is via a stairway in carbon positioned at the centre of the yacht, almost as though it were its spine. Illuminated with LED strips to subtly accentuate the distinctive material and form, the stairs are a striking, sophisticated design element.

Let the beauty surround you



More generally appreciated for its technical performance, carbon fibre has been incorporated as a distinctive stylistic feature in the Grande S10, accentuating the sensation of dynamism and strength.

The designer has used it not only in the frame of the side fashion plates but also in the extreme front of the bow, which he terms the "gun barrel" due to its particular shape. This distinctive stylistic element also features a teak insert and LED strips.

Artful use of space is seen in the bow lounging area sunbeds which contain underneath storage for fenders.





The flybridge, connected to the main deck by a carbon stairway, is totally given over to conviviality and entertainment, loosely divided into two zones.

The first, with its roomy, comfortable sofas, is perfect for lounging, while the second is a versatile informal dining area with a wet bar, mobile barbecue and two tables which can be joined together to create a single large eight-seater.

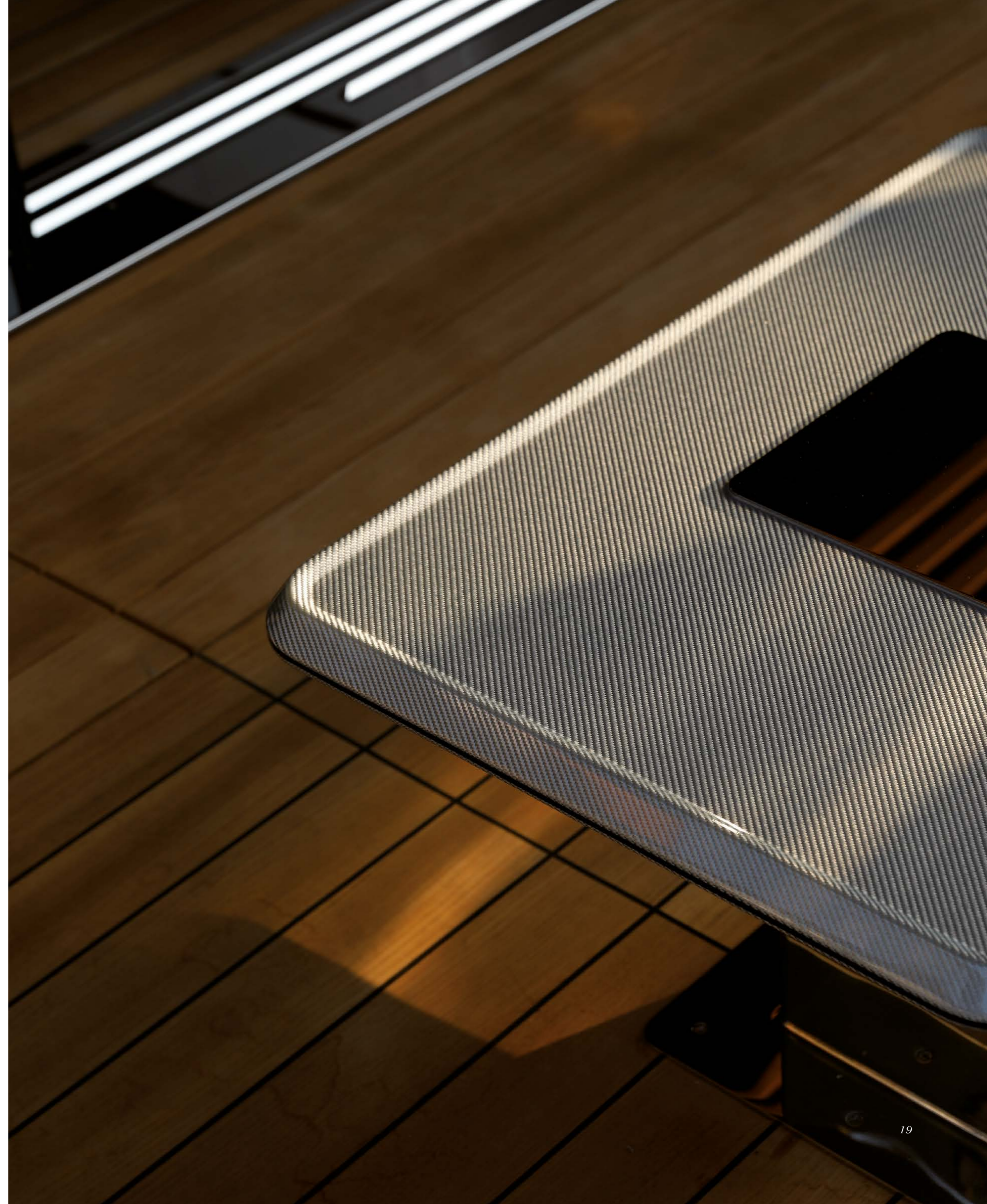
An optional fibreglass hard top is also available.

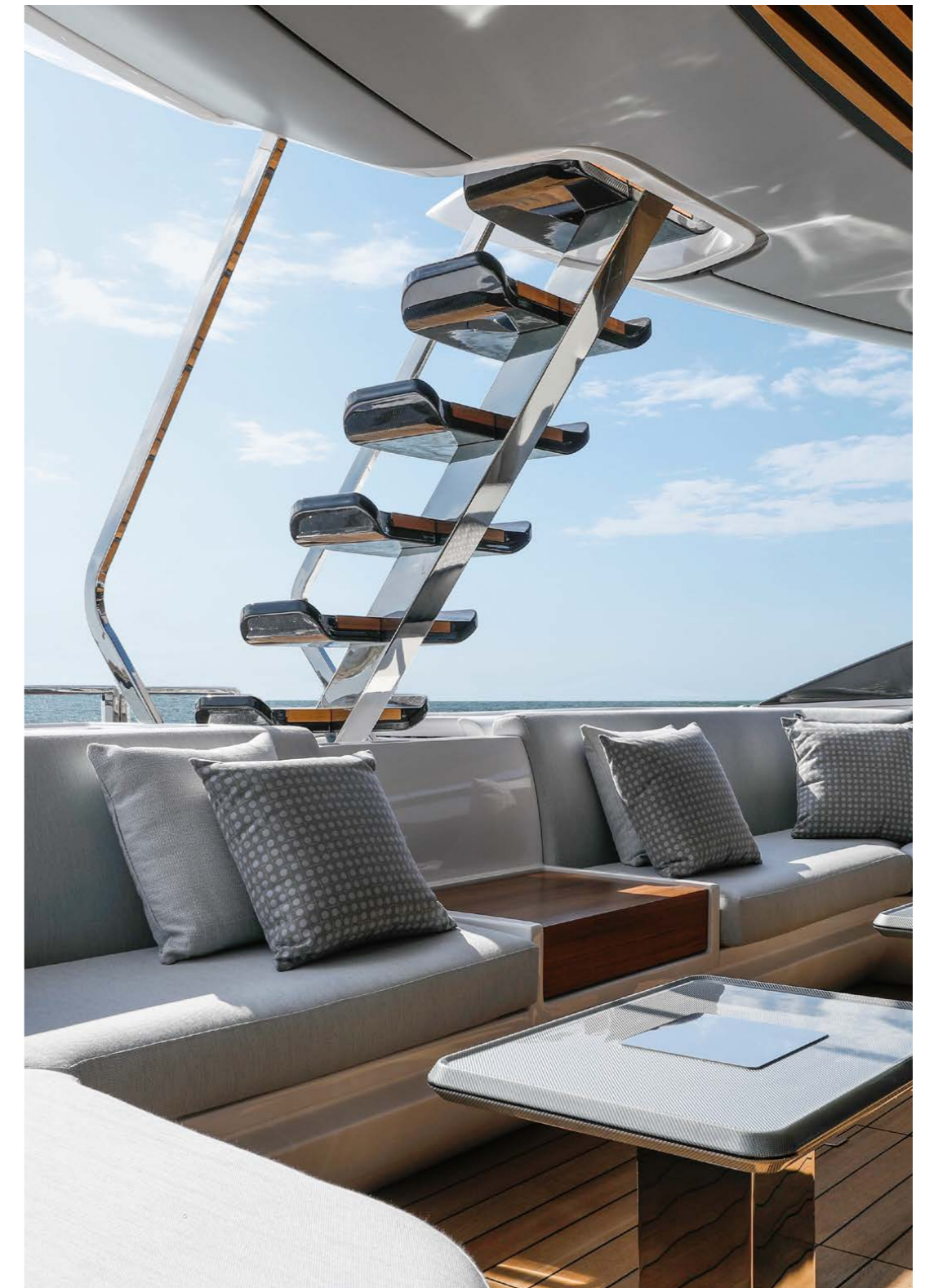
An extraordinary connection with the sea



The spacious 17-square-metre cockpit can be furnished with loose furniture, enabling it to be transformed from a daytime relaxation area to a dance floor in the evening.

The stern-facing transparent parapet makes this space a veritable terrace overlooking the sea, elevating the connection with the water. Creativity and innovative design are also behind the full-beam platform, a never-before seen feature in this category, which is comfortably reached by a series of recessed teak stairs.





Aft cockpit view









THE CHARM
OF
MODERNITY







ARCHETYPAL **ITALIAN**
PURITY OF **DESIGN**
CHARACTERISES BOTH THE
EXTERIORS AND INTERIORS
OF THIS BOAT WHICH
SURPRISES AND **DELIGHTS**.
THE INTERIOR DÉCOR
HARMONIOUSLY PAIRS
PRESTIGE WOODS WITH
WHITE LACQUER TO
CREATE AN AIRY, **LIGHT-
FILLED** AMBIENCE WITH
SPORTY UNDERTONES.







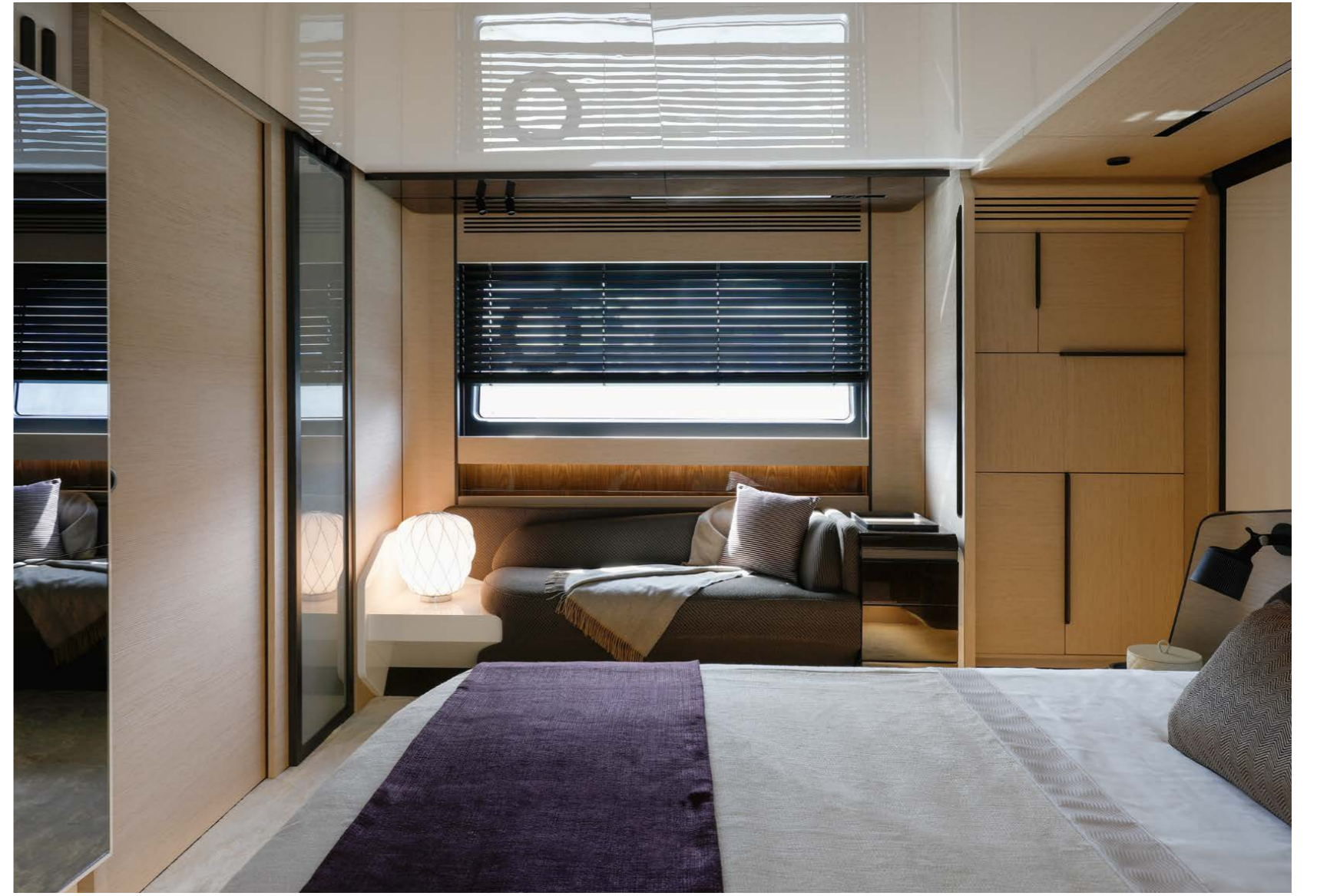
LUMINOSITY
AND
ELEGANCE

*Simple
lines create
a timeless
elegance*





Owner's suite detail



THE ESSENCE
OF EXCELLENCE





View of the owner's suite



The décor artfully combines elegant wood and white lacquer to create an airy, subtly sporty ambience.



VIP cabin view



Portside and guest cabins view





Owner and guest privacy, a key consideration in the design of the Grande S10, is preserved through the positioning of the stairs to the galley with its convenient serving hatch and crew quarters. Leading down from the stern area of the main deck, the stairs can be accessed from both the internal dining area and the lateral walkway. The crew area consists of two cabins and a laundry cabin which can accommodate an extra bed.





The bridge was produced in partnership with Simrad-Naviop and has a single ultra-wide screen displaying key monitoring and navigation information, a mix of video sources and clusters of content. Accessing this information is easy with a choice of commanders or two touch screens duplicated by a pair of physical joggers for extra redundancy and safety.



CARBON TECH

Azimut Yachts is a pioneer in the extended use of carbon fibre, introducing it across all its collections and understanding its potential in terms of enhanced performance on the water and unprecedented on-board comfort. The use of carbon fibre not only enables increased volumes and additional surfaces within the same weight ranges, but also delivers outstanding levels of both static and dynamic stability, with a decrease in roll momentum of between 3 and 15%. The Azimut Grande S10 uses pure carbon on its flybridge, superstructure, radar arch, transom and platform.

DECK	—
SUPERSTRUCTURE	—
FLYBRIDGE	—
RADAR ARCH	—
HARD TOP (opt)	—
TRANSOM/PLATFORM	—

— Carbon fibre
— Hybrid Carbon Glass







TECHNICAL FEATURES

*Elegance meets
cutting-edge technology*



MAIN TECHNICAL DATA

Length overall (incl. platform)	28.72 m (94' 3")
Beam max	6.34 m (20' 10")
Draft (incl. props at full load)	2.03 m (6' 8")
Displacement (at full load)	90 t (198416 lb)

PERFORMANCE

Engines	2 x MTU M96L - 2600 mHp
Maximum speed	up to 35 knots
Cruising speed	up to 28 knots

ACCOMMODATION

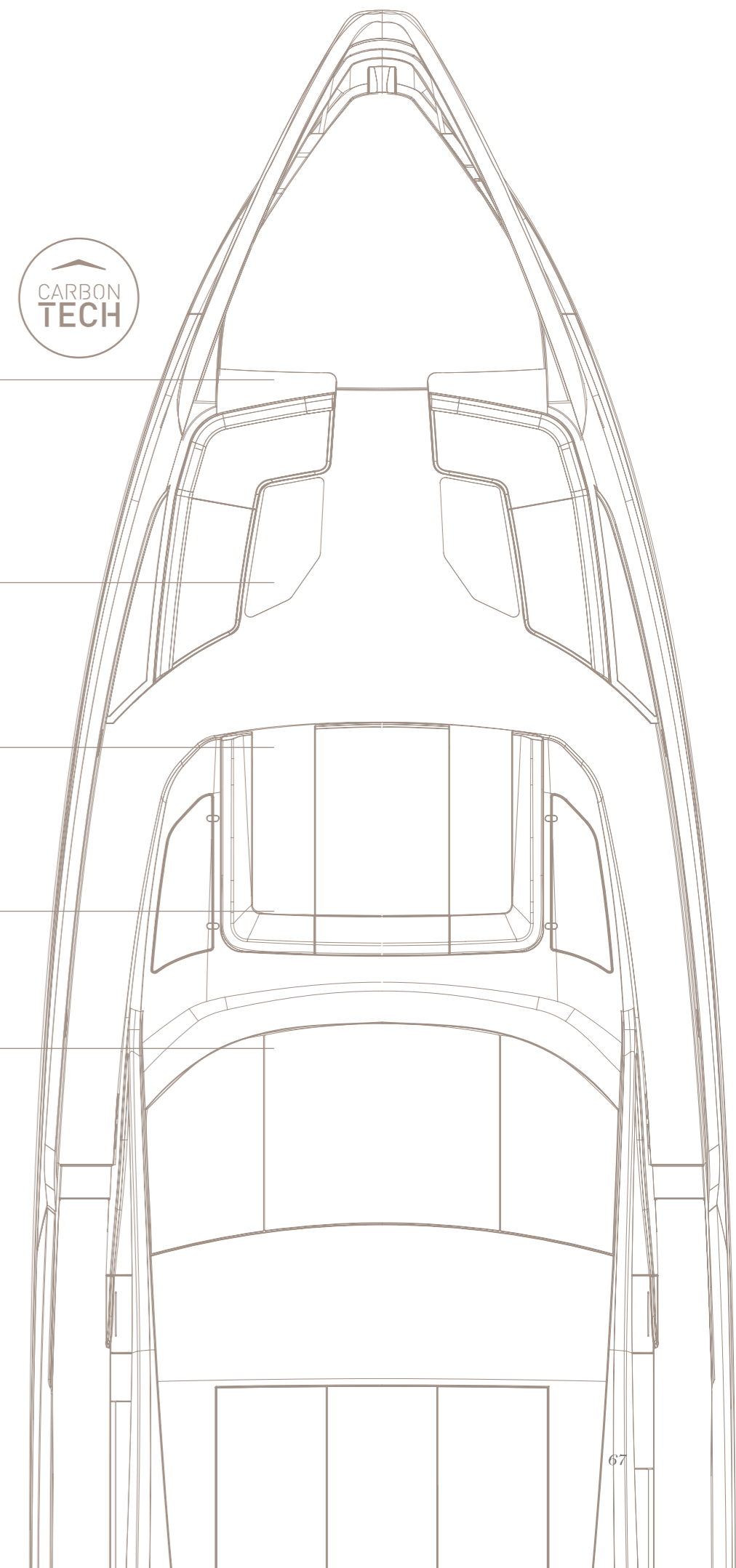
Cabins	4 + 2 crew
Berths	8 + 3 crew
Head compartments	5 + 2 crew

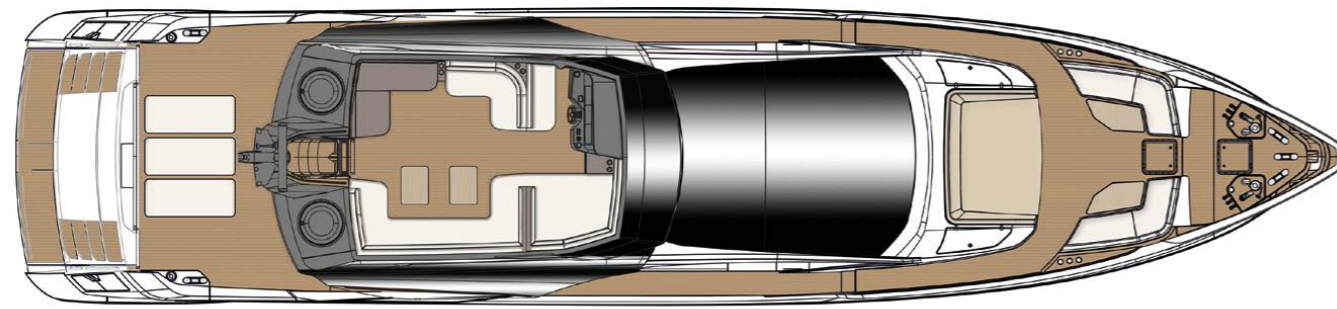
TANK CAPACITY

Fuel capacity	9500 l (2510 US Gal)
Fresh water	1750 l (462 US Gal)

PROJECT

Building material	GRP and Carbon fibre
Exterior styling & concept	Alberto Mancini
Interior designer	Francesco Guida
Builder	Azimut Yachts

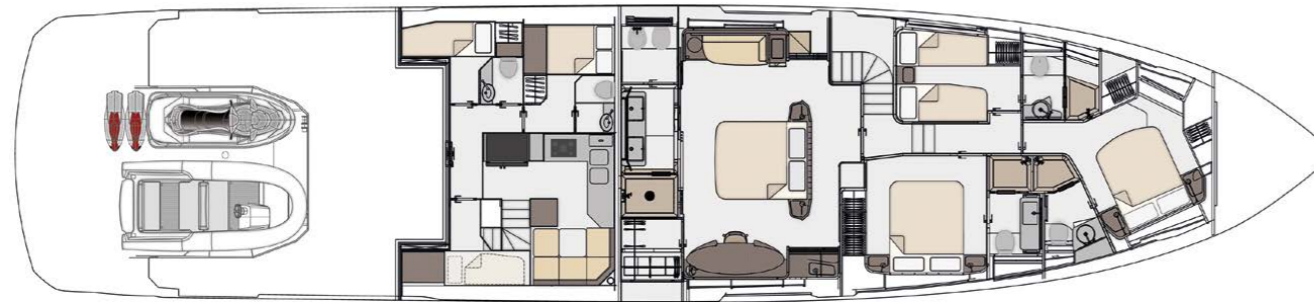




Flybridge



Main deck



Lower deck

The garage can host a tender up to 4.5 metres + 1 jet ski and two seabobs.
The recommended tender is Pirelli J45 Azimut Special Edition.

The culmination of a lifelong quest for sophisticated innovation and unwavering commitment to pushing the boundaries, the Azimut Grande S10 represents the ultimate expression of avant-garde design and technology.

THE VERSATILITY OF INNOVATION



As an alternative to the sliding dividing door between the saloon and dining area, a door which separates the wheelhouse from the living zone is available.



The saloon's ceiling features an electrochromic glass skylight, a laminated panel incorporating an electro-optical film based on SPD (Suspended Particles Device) technology. This system, which is based on an electrical field that aligns the particles in the film, filters light and UV rays so as to provide greater comfort and wellbeing.

Regulations UNI ISO 8666

The levels of performance described apply to a standard craft (with standard equipment installed) with clean hull, propeller and rudders. Moreover, it is specified that such levels of performance were achieved under favourable sea and wind conditions (1 on the Beaufort scale and 1 on the Douglas scale); in the case of diverse or less favourable sea conditions performance levels may vary considerably.

EC Approved

Owing to constant technological developments, Azimut-Benetti S.p.A. reserves the right to modify the technical specifications of its boats at any time and without prior notice.



A pioneering privately-owned company

When you choose an Azimut Grande, you become a player in an all-Italian story, the story of a shipyard with a prestigious past, a rock solid company with an image of success which gives luxury yachts an added value that lasts over time. It is a large family business that builds boats and blends fanatical attention to detail and superb Italian creativity with constant technological development. With a vast distribution network spread over the five continents, Azimut Yachts is the symbol of the very best of "Made in Italy" throughout the world. The true leader in the manufacture of luxury yachts where unparalleled style merges seamlessly with innovation.

This brochure in no way constitutes a contract of sale for the boatyard's vessels to any person or company. All information contained herein, including but not limited to technical and performance data, illustrations, and drawings, is non-binding and for purposes of illustration only. The information in this brochure refers to the boatyard's standard motoryacht models available as of the date of publication. Technical and descriptive information is valid only to the extent that it pertains to the specific vessel that is the subject of a purchase. Contract terms are valid only to the extent that they are contained in a contract of sale. This document is based on information available at the time of publication. Despite efforts to ensure the greatest possible accuracy, the information contained herein may fail to cover all details, omit technical or commercial changes that may have been made subsequent to publication, describe features that are not present, and fail to envisage all circumstances that might occur. Any illustrations, photographs, diagrams and examples shown in this brochure are included solely for the purposes of illustrating the text. Due to the different features of each vessel, the boatyard assumes no liability for actual use based on the illustrated applications.

CONCEPT AND ART DIRECTION:

Matteo Fiorini Studio

GRAPHIC PROJECT:

Giacomo Vignoni Studio

PHOTOGRAPHS:

Sara Magni

Guerrieri Visual

Printed in Italy by Tipo Stampa

August 2021

Azimut|Benetti SpA

VIA M. LUTHER KING, 9 - 10051 AVIGLIANA (TORINO - ITALIA)

Azimut Yachts - a brand of Azimut|Benetti Group

azimutyachts.com

AZIMUT YACHTS THANKS TO: Loro Piana, Mariaflora, Paola Lenti, APR.

AZIMUT
Grande