

Frers 43 - Fast Solid Cruising Yacht

\$135,000.00



Specifications

Year	1974
Make	Frers
Model	Cybils 43
Stock Number	10133

Engine

Enginemade	Yanmar
Engine Model	4JH4AE
Engine Year	2009
Engine Fuel	Diesel
Drive System	Shaft Through Hydraulic Drive

Interior

Berths	6
Headroom	1.85
Toilet	Composting Toilet With Shower
Cooking	Gas - 4 Burners, Oven & Grill
Cabin No	2
Saloon	Settees Around Central Table With Pilot Berths, 2 Sinks, Fridge + Hot Water Cylinder Heated Off Engine,

rig

Rig Details	Tall Rig With Twin Spreaders
Rigging	Stainless Steel 2011
Reefing	Electric Roller Furling On Jib And Slab On Main
Spars	Alloy With Spinnaker Pole
Sails	Fully Battened Main With 4 Reefs, Genoa, Stay Sail And Storm Jib
Winches	9

Construction

Hull Construction	GRP Airex Core
Builder	Frers & Cybils
Loa Approx	13
Beam Approx	3.8
Draft Approx	2.1
Hull Type	Mono
Transom	Enclosed

Tankage

Fuel Capacity Approx	180
Fuel Tank	1 X GRP
Water Capacity Approx	260
Water Tank	2 X Stainless Steel

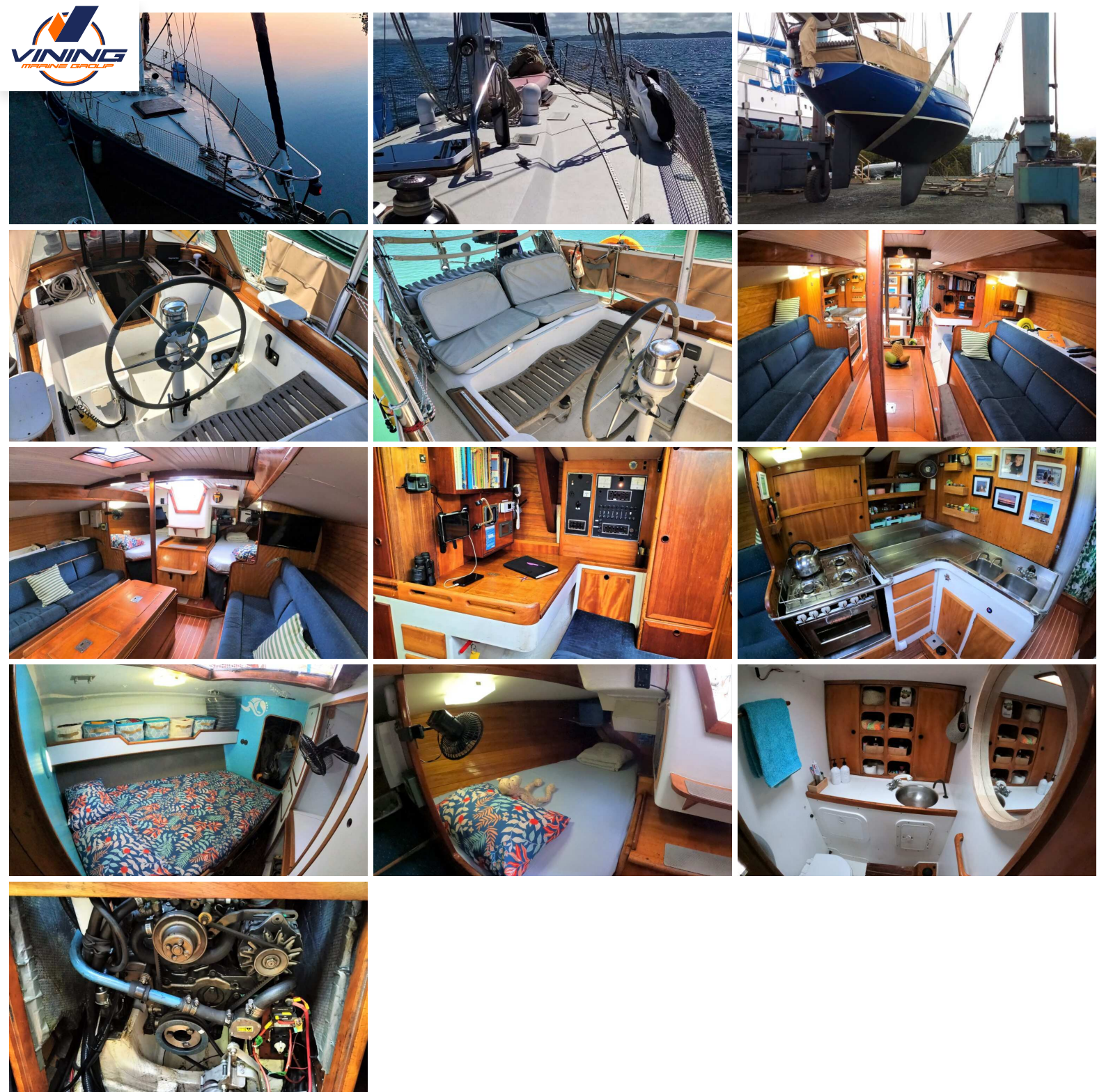
Accessories

Safety Equipment	EPIRB, VHF Radio, 6 Person Life Raft 2022, Gas Detection System, 1 Electric + 2 Manual Bilge Pumps, Off-Shore Cat 1 Flares, Drogue, First Aid Kit, 2 X Man Overboard Ring And Light, Folding Danbuoy, Swim Ladder
Navigation Gear	2022 Raymarine Chart Axiom 9 Plotter, 2022 Raymarine Quantum Radar, Compass, Raymarine Boat Speed, Wind And Depth Instruments, Autopilots, Wind Pilot
Ground Tackle	25kg Rocna With 85m Chain + Danforth With 15m Chain And 40m Rope
Capstan	Simpson Lawrence Pacific V2200

Talk to the Listing Broker
Contact The Listing Broker

Rob White

027 332 2535
whangarei@viningmarine.co.nz
Whangarei



Frers 43 - Fast Solid Cruising Yacht

A beautiful flush decked German Frers designed cruising yacht with good sailing characteristics and sea kindly motion. Strongly built in Frers own boatyard for offshore conditions. Below decks, her hardwood interior joinery enhances the feeling of strength and comfort. She has 2 large quarter berths and a master cabin forward. The saloon has seating around a centre table which houses the fridge. The 2009 55hp Yanmar engine is located under the cockpit and drive the prop through a hydraulic motor. She is fully set up for cruising with solar panels, water maker, wind pilot, bow thruster and diesel heater. The twin spreader alloy cutter rig carries a fully battened mainsail and furling genoa using a Bamar electric furler. The staysail and storm jib are hanked on an inner forestay. Over the last few years, the owners have undertaken a lot of work including mast out rig inspection and new mast step put in (2019), new rudder (2019), new chain plates (2021), new hatches (2018), new electronics package (2022), and batteries replaced (2020 and 2022). She has just returned from the islands with a family of 4 and was Cat 1 certified for the trip. This boat has lovely lines, designed and built to sail well, making both coastal and offshore passages fast and comfortable. For more information call Rob at our Whangarei Office on 0272 332 2535