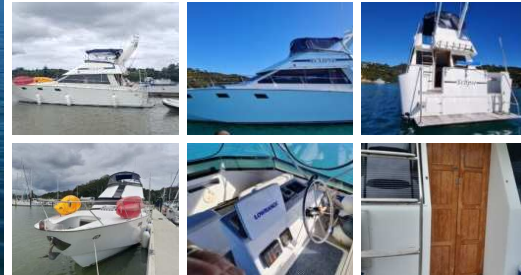


\$199,000.00



Specifications

Construction

Year	1986
Make	Carter
Model	47 Flybridge
Style	Cruiser-Fisher
Stock Number	10141
Comment	Beautifully Maintained Large Volume Family Cruiser/ Sport-Fisher

Hull Construction	Glass Over Ply
Builder	Max Carter
Loa Approx	14.6
Beam Approx	4
Draft Approx	0.9
Hull Type	Planing

Engine

Tankage

Enginemade	Volvo
Engine Model	TamD- 60 C
Engine Year	1986
Hours Approx	3000
Engine Fuel	Diesel
Drive System	Shaft
Comment	Well Maintained Moderate Hr Engines

Fuel Capacity Approx	2000
Fuel Tank	Stainless Steel
Water Capacity Approx	600
Water Tank	Stainless

Interior

Accessories

Berths	6 Plus Flybridge
Headroom	6 Foot
Toilet	Vacu-Flush
Cooking	Gas - 4 Burner Hob With Oven & Grill
Cabin No	2
Saloon	Large With Good Seating For 6

Safety Equipment	EPIRB/ Life Jackets/ Horn/ VHF/ Tender/ Bilge Pumps/ First Aid Kit /MOB Ring & Search Light/ Flares
Navigation Gear	Lowrance GPS Plotter
Ground Tackle	Chain & Rope
Capstan	Electric Remote

Talk to the Listing Broker
Contact The Listing Broker

Dave Vincent

021 0271 1365
davev@viningmarine.co.nz
Opua, Bay of Islands

Carter 47 Flybridge Cruiser

This Carter 47 was built specifically for the Designer and has a number of refinements not normally included, for example, the Tender Garage. Stepping on board via the swim platform, into the large cockpit, and up once more into the expansive saloon and Galley. The new leather and the venetian blinds are a nice touch for control of light and heat. She is well set up with Dual Helm, allowing social interaction on calm days and equally at meal times. Continuing down there is a spacious double to Port, separate Vacu-flush Heads and shower room with large Vee berth having excellent storage around and under. She has a pair of well maintained Volvo 250s with moderate hours, with the entire boat presenting in immaculate condition and with a good array of Lowrance Electronics, makes for easy navigation and fish finding. To the exterior, with good all-round safe access and to the bow with her sunken anchor well allowing for safe anchoring and an uncluttered deck in all weathers. For more Information Ph Dave- 021-027-11365

Features:

- Tender Garage
- Dinghy and 2.5HP Outboard
- Numerous spares/ Bed linen/ Cutlery etc
- Recessed Anchor well
- Solar Power

