

**CENTER CONSOLES**



**WALKAROUND CABINS**



**2013**



**EXPRESS CABINS**



**DUAL CONSOLES**







# Thank you...

...for considering a new Grady-White boat for your family! We sincerely appreciate your interest. We hope this publication introduces both our products and the unique "Grady Life" experience. But a printed catalog only scratches the surface. We have so many other rich resources of information. Our popular website includes the latest specifications, performance reports, video galleries, virtual tours, customer tips, wonderful customer photo galleries, Grady-White Clubs information, dealer locators and much, much more. Opt in for the great resources found in our publications, *Anchorline* and *Docklines*, too! See and share the experience of owners and enthusiasts on our *Facebook* page and *@GradyLife* on *Twitter*. Download our iPhone app at iTunes. As always, the best resources for information are our tops-in-the-business Grady-White dealers and other Grady customers. We urge you to talk with them!

Together, the entire Grady-White team focuses on providing exceptional enjoyment and terrific value as part of our larger goal of delivering the ultimate boating experience. It's very satisfying work, creating great new products and refining our well-proven winners, knowing that Grady-White boats will bring many lifelong memories to our customers. We come to work excited to achieve what we are striving to accomplish, and leave very satisfied at the end of the week knowing we've met the mark. That is why we invest in exciting new products such as our show-stopping, unlike-any-other *Freedom 335* as well as the spacious *Freedom 285* dual consoles, and incrementally improve

every one of our 27 models from the 18-foot center console *Fisherman 180* to the exquisite 36-foot *Express 360* cabin boat and the downright awesome *Canyon 366* center console. There is an incredible variety of superbly engineered Grady-Whites. Without a doubt there is one that's absolutely a perfect match for you.

One of the most rewarding results of Grady-White's one-to-one, long-term relationship with dealers and customers is the advent and growth of our Grady-White Clubs. We love them and so will you! Some of our Clubs began spontaneously from dealer and owner interest, some blossomed from strong leadership, and all grew from offering individuals confidence to embark with a group on excursions and special events that are just pure fun! We are amazed by the number of creative opportunities our Clubs offer. Grady-White dealers strongly support the growth of existing Grady-White Clubs and creation of new ones. Learn about our Clubs in your area and follow their activities on our website. Joining a Grady-White Club makes a fantastic boating experience even better!

For model year 2013, we continue to emphasize our innovative *Freedom Series* – eight versatile dual console models that bring a new level of "freedom" to the range of activities you can enjoy on big water. Our *Freedom Series*, like all Grady-Whites, are great riding, saltwater tough, safe and sure, and filled with features that allow you to enjoy so many activities well. Rest assured, we have not forgotten our legendary saltwater fishing heritage. Every Grady-White is a superb fishing boat. If big water fishing or cruising is your passion, there is no better choice than a Grady-White. You'll be in the best riding boat on the water. In short, you'll be exceedingly happy with your new Grady-White!

Grady-White eagerly looks to the future. We know that for quality, safety, reliability, value and the ultimate in boating satisfaction, a Grady-White will always be in a class all its own. Visit your local dealer! Happy boating!

*Eddie Smith, Jr.*      *Kris Carroll*

Chairman, CEO

President



# The Grady Life connects family and friends and makes long-term memories like no other recreational activity.

**The Grady Life experience** offers you, your family and friends the ultimate in boat ownership. Grady-White boating is all about making memories. Whether your crew is very young or teenaged, young adult or a cross-generation of parents and grandparents, no activity can match the variety and meet the needs of different age groups than boating on a Grady-White. With boats this incomparably reliable and versatile, everyone can “do their own thing” yet be together. Swimming, diving, all kinds of fishing, exploring, raft-ups, lunch or dinner cruises, camp-outs, wakeboarding and water skiing or just “sunnin’ and funnin’”—these activities just scratch the surface of what Grady owners enjoy. No other outdoor recreation compares in diversity and fellowship with the Grady Life. You will feel confident and free to enjoy many adventures, and reap enormous rewards. Our great dealers make your experience as carefree as possible!

Grady customers enjoy higher satisfaction primarily because of the company and dealers’ commitment to providing the ultimate boating experience. The values, principles and systems with which we’ve operated for over 50 years, and the resulting relationships, help assure decades-long owner loyalty.

Grady-White and Grady-White dealers aim for customer satisfaction that exceeds all expectation. Read or watch our customer testimonials online. Visit [gradywhite.com](http://gradywhite.com) often and view the Grady Life photos, or take a peek at our growing collection of fun and useful videos. Our customers love to share stories about their great Grady moments, and how well their boats perform! These reflections are not the only benchmarks of owner enjoyment. Every third-party

“We travel together to the Bahamas, do raft-ups, and gather for dining at restaurants. Right now we have three fishing tournaments including one for the ladies. We gather on sand bars, and enjoy picnicking and being together. Our Club is a very social and very rewarding experience.”

— CAROLINE AND JIM FALLON  
GULFSTREAM GRADY GROUP MEMBERS

measure ever conducted in our industry for our category has ranked Grady-White Boats at the highest levels.

There are many annual Grady-White dealer events including tournaments, cruises and fishing schools. The fabulous Grady Fest that took place for the third year in 2012 is a fantastic celebration of the boating lifestyle. Grady-White owners share camaraderie and much, much more throughout the year. There’s a tremendous online resource center found at our website that includes interesting customer tips about destinations, travel, cooking aboard, fishing, and customizing and maintaining your boat. The employees and associates of our privately held company—often with relationships that span many decades—actively keep in touch with you to hear about your great Grady days, and delight in sharing stories about your good times on and in the water!



## Grady-White: Historic highlights of a customer- and quality-focused company

**1959**

Glen Grady, Don White begin building small, tough, high quality wooden “works of art” for coastal boating that perform even in rough seas.

**1968**

Eddie Smith purchases Grady-White and completes the changeover to fiberglass production.

**1972**

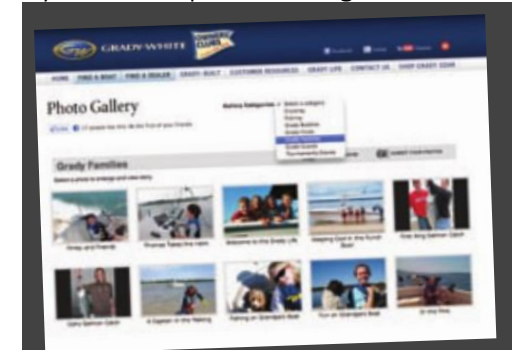
Ground breaks for what remains today one of the most modern boat manufacturing facilities in the world.

**1975**

Grady-White introduces the *Hatteras 204-C Overnighter*, the company’s first walkaround model.

Explore [www.gradywhite.com](http://www.gradywhite.com)! Better yet, visit us and see the very best in boat building.

All the details are here on every model, and so is a sampling of the fun! We’ve created [gradywhite.com](http://gradywhite.com) not only for you to learn about our boats but also we’ve put in many features to help give visitors a taste of the “Grady Life.” Quite simply, it’s a lifestyle without comparison in boating!



[gradywhite.com](http://gradywhite.com) • Grady Life photos • specifications • videos • performance reports • virtual tours • clubs • dealers • publications • much more!

**You are invited to tour our factory and meet our team of craftsmen!** There is no substitute for a visit to our factory. You will see one of the most up-to-date boat factories of its kind in the world, meet our craftsmen face to face, and learn much more about what makes a Grady-White and the Grady Life so special.

Visit our website to download driving directions to the factory. If you are flying, come to PGV in Greenville, NC. Call us ahead of time and we’ll pick you up!







# Grady-Built: The finest materials for built-in value and security

**A Grady-White is no ordinary craft.** Our 316 grade stainless steel hardware is superior to 304 grade because of the nickel and chromium in the alloy, plus molybdenum. Cast parts are passivated in acid to remove casting impurities, then buffed,



*Our patented fold away aft bench seat is a result of our process of seeking customer advice on the kinds of material and detail that work best. Hardware and fixtures are placed right where you need them.*

then passivated and buffed again. We test sample batches in our “instant ocean” salt bath. The result is hardware that’s strong and durable even after years in a saltwater environment.

Whether we utilize a traditional glass laminate or a new composite or core material depends on the application. No matter which material we select, Grady-White’s extensive in-house and on-the-water tests ensure long lasting value. Cabins are handsome, with eye-pleasing fabrics. We test all appliances including microwaves, refrigerators, satellite radios, TVs, MP3 stereo output devices and DVD players. Fixtures are the best available.

Resin transfer molded (RTM) parts such as fish box lids, hardtops and bow pulpits are solid and durable. RTM is especially preferable for fish box lids because the smooth underside surface is easier to clean than the rough glass painted surfaces found on competitors’ products.



*The helm area is ergonomically designed and comfortable for ease of function and safety. The horn is the red button so you can find it quickly. The windshield is engineered to enhance your field of vision and sight lines. Always safety first on a Grady-White!*

Gunwale mounted rod holders are impervious to UV rays, and extra durable. Rod racks are sturdy and easily accessible. Super strong, durable polyethylene trim work and toe rails are tough, low maintenance and their good looks last. Grab rails, handholds, handles, swim ladders and transom door latches are battleship-tough as are cleats and bow and stern eyes. Stainless steel drink holders are easy to clean. Durable materials give years of trouble-free use and that means a lower cost of ownership.

**1982**

Grady-White’s *Sailfish 25* ushers in the era of smaller outboard-powered offshore sportfishing boats.

**1989**

The *Marlin 28* introduces the SeaV2<sup>®</sup> hull, designed by C. Raymond Hunt Associates, delivering a soft, dry, true-tracking ride plus stability at lower speed.

**1993**

Kris Carroll, a Grady-White veteran, is named as Grady-White’s new president.

**2001**

In the first J.D. Power and Associates study of the marine industry, Grady-White ranks “Highest in Customer Satisfaction with Center Console Boats.”

Customers tell us they like different seating choices, and no other brand offers as many options as Grady-White. Whether you opt for available flip-up bolsters (pictured at left), Deluxe seating (see options pages) or choose our standard seating, everyone will be very comfortable aboard your new Grady-White!



## Grady-Built: Built by craftsmen and superbly engineered through customer input

**The people** who design and engineer Grady-Whites are avid boaters themselves. Through ongoing contact with our boat owners, we create customer-driven designs that are constantly refined and thoroughly tested along the North Carolina coast to ensure superb performance in the toughest conditions.



*Our latest plant expansion further improved the most productive, efficient and completely integrated boat building facility in the world today. This functionality assures the highest product quality and longest lasting value for our customers.*

Our production professionals are real craftsmen. Hand laid fiberglass provides an unmatched laminate structure. Only 100% hand lay-up assures a uniform thickness for strength and structural stiffness. Grady-White uses this tried and true method, fitting patterned pieces of fiberglass to deliver consistent laminate thickness on every boat. The resin for every part is metered and measured so each has an optimal glass-to-resin ratio. Stringer systems are precision cut by computerized router and then glassed in while the hull is still in the mold so your SeaV2® hull retains the correct shape. Our proven stringer grid system is consistently strong, light, phenomenally durable, and has a limited lifetime warranty. Closed cell foam sprayed in between the stringers adds strength and augments flotation.

Super strong transoms are not only solidly Grady-Built of the strongest materials, but also reinforced with an angled aluminum brace to provide sure support for today's four-stroke engines. This bracing supports the top motor hole mounts, distributing torque throughout the transom.

At the helm threshold of our cabin models, decks are joined to liners with double through bolting. Aft of the seat boxes, another through-bolted and fiberglassed system



*thickness and resin ratios. Top quality components assembled with skill result in quality, reliability and performance over the long haul.*

### 2002

*Express 330* named *Boating Magazine* "Boat of the Year." Grady-White ranks "Highest in Customer Satisfaction With Coastal Fishing Boats Two Years In A Row."

### 2003

Plant expansion provides customers with even greater quality and value. Grady-White ranks "Highest in Customer Satisfaction With Coastal Fishing Boats Three Years In A Row."

### 2005

*Express 360* introduced, setting new benchmark for boating. Grady-White ranks "Highest in Customer Satisfaction With Coastal Fishing Boats Four Times in A Row."

### 2007

*Express 305* introduced. *Canyon 336* debuts, incorporates cabin comfort in a center console. Grady-White ranks "Highest in Customer Satisfaction With Coastal Fishing Boats (17-28 feet) Six Times in A Row."



Look carefully at a Grady-White running. You can actually see three wakes coming off the hull. This is a reflection of the smooth, dry trademark Grady-White SeaV2® ride.

## Grady-Built: Our exclusive SeaV<sup>2</sup>® hull design is the ultimate in offshore performance.



### There is no ride like Grady-White's.

Often imitated but never equaled, our exclusive SeaV2® hull offers the industry's best combination of dryness, seakeeping performance and speed. Grady-White factory rigs four-stroke engines exclusively so the SeaV2 hull and fuel tank position

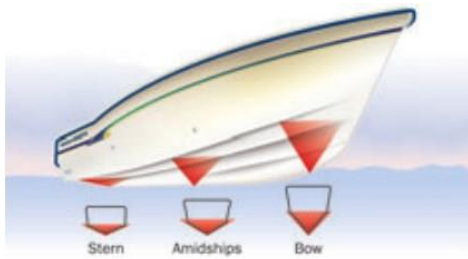
are especially well balanced for optimum performance of these new power sources. Unlike other brands, a SeaV2 hull design has no two places on the keel where the deadrise is the same. The vee continuously sharpens from the

transom to the bow stem. A SeaV2 hull design with 20 degrees of deadrise at the transom will have around 30 degrees amidships—more than even the most radical older deep vee designs. The deeper vee forward means a softer ride at sea. Less vee at the transom coupled with wide chines provide stability at rest and when trolling.

A SeaV2 hull tracks as if the boat is on rails. The series of wedges that form a SeaV2 hull have tremendous righting force providing incredible tracking in quartering seas and especially in following seas. There are no rounded shapes to behave like a ball in the water that has no upright position.

Strakes and chines knock the spray down cold. Check the spray coming off a SeaV2 hull. You can actually see three bow wakes in smooth water. Those are the individual deflectors working. This is the reason SeaV2 hulls are drier running than boats with rounded sections that blow spray past the strakes and chines and into the cockpit.

Grady-White delivers a deep vee ride with modified vee efficiency. Unlike other deep vee hulls, SeaV2 hulls provide a soft ride without fuel efficiency loss. A SeaV2 hull slices through seas effortlessly with a sharp point of entry, and the varying deadrise builds buoyancy that lifts the boat as it proceeds through waves. The result: better performance.



Like a series of sea-cutting wedges



Tracks in quartering seas

Strakes and chines knock down spray

### 2009

Grady-White celebrates 50th anniversary. Ranks "Highest in Customer Satisfaction With Coastal Fishing Boats (17-30 feet) Eight Times in a Row."

### 2010

*Fisherman 230* and *Canyon 366* debut; center consoles 28'-36' become *Canyon Series*. 2010 NVMACSI (9th in a row) continues unbroken string of every industry award for customer satisfaction.

### 2011-2012

*Freedom Series* featuring the new 28-foot *Freedom 285* gives customers the industry's largest selection of fish-and-cruise dual consoles. Grady center consoles 18'-25' now comprise *Fisherman Series*.

### 2013

Grady-White's stunning 33' *Freedom 335* is the next generation dual console, a roomy, elegant cruiser and stylish big water fishboat that's a leap ahead of the industry in boating versatility with many never-before-seen features.



# Express 360

36' Express Cabin

*"Our family of five spent a month in the Bahamas on our Express 360, and everyone was totally comfortable. We covered over 1500 miles at average cruising speeds of 25-31 mph." —Scott and Anja Brane, Clearwater, FL*



Shown with optional features

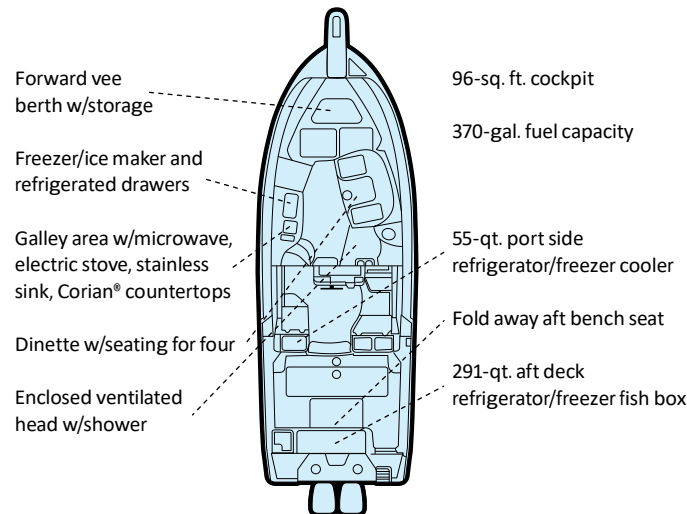


Starboard lounge seating includes innovative hideaway folding table, chart/storage area and deluxe cushioning.



Cockpit forward showing 96-sq. ft. cockpit, helm station with deluxe chair, and port and starboard lounge seating

- Beam Amidships: 13'2" (4.01 m)
- Bridge Clearance w/Hardtop: 10'6" (3.20 m)
- Center Line Length: 36'7" (11.15 m)
- Length Overall (w/pulpit): 39'3" (11.96 m)
- Hull Draft: 29" (0.74 m)
- Maximum HP: 1050 (783 kW)
- Freshwater Capacity: 65 gal. (246 l)
- Weight w/o Engines: 14,919 lb. (6767 kg)



Aft berth includes 56" x 84" sleeping area with privacy curtain, teak foot well, cherry hanging locker with cedar lining, bulk storage and six rod holders.



# Express 360



Shown with optional features



Main cabin includes teak and holly sole, seating for four at cherry dinette table, variable accent lighting, 16,000 BTU air conditioning with zone cooling, expansive forward berth with storage and privacy curtain, and cherry enclosed storage areas.

Head area includes sink with Corian® counter surface, shower area with curtain, teak grate over shower drain, full length mirror, VacuFlush® head and lighted vanity mirror.



# Factory options add to more Grady Life fun!



§ Hardtop front and side curtains for models 20' and up (330 shown). Drop curtain is available. Frame style and canvas vary per model.



§ Ivory canvas option for 225 soft top arch, hardtops, T-tops (255, 275, 283, 285, 306, 307; standard on 290, 300, 305, 330, 335, 360, 366)

With more requests for colored hulls, and taking into account the individual personalities of today's customers, Grady-White now offers three colors of hull paint and a very sharp-looking gelcoat color as factory options in addition to our classic Grady-White cream-colored hull.



§ Sand (gelcoat)

§ Sea Glass (paint)

§ Vista Blue (paint)

§ Harbor Blue (paint)

**\*Ink colors shown are approximate. See your dealer for actual color samples.**



§ Cabin model hardtop with lockable radio box(es), spreader light(s), side rod holders and overhead storage net (optional models 22'-25', standard 29'-36')



§ Freedom Series hardtop (255, 275, 285, 307; standard on 335)



§ Walkaround series vista top and side curtains (208, 226/228, 232, 258)



§ Swim platform and ladder



§ Fisherman series Bimini top (180, 209, 230)



§ Bow thruster (290, 300, 305, 306, 307, 330, 335, 336; standard on 360, 366)



§ Freedom series vista top and side curtains (192, 205, 208, 225, 255, 275, 307)



§ Bow pulpit shown with anchor windlass option



§ Cabin rod racks (holds 4)



§ Raw water livewell (209 lean bar option)



Individualize your new Grady-White to best suit the water activities that your family enjoys with quality factory options that complement your boating lifestyle. Not all options shown here. For more information on factory options available per model, ask your dealer or visit [www.gradywhite.com](http://www.gradywhite.com).



5 Platinum helm chair



5 Deluxe I helm or companion chair



5 Deluxe II helm or companion chair



5 Deluxe III helm or companion chair with flip-up bolster



5 Companion bench seat (300 shown)



5 Companion bench seat (208, 226)



5 Ski pylon (180, 192, 205, 225, 230, 255, 275, 285, 307, 335); placement varies



5 Freedom Series wet bar with electronically-operated helm seat w/flip-up bolster, fire extinguisher holder, sink, storage drawer & trash compartment (255, 275, 285)



5 Electric grill (255, 275, 285, 307); see product pages for additional grill option photos



5 366 motorized bow table. Manual bow and/or cockpit tables are available options (205, 225, 255, 257, 283, 306, 366; standard on 275, 285, 307, 335). Tables vary per model.



5 Freedom series sleeper seat with storage (192, 205, 225, 255, 275; standard on 285)



5 Optional deluxe lean bar w/backrest and flip-up bolster (209, 230; standard on 257)



5 Bow casting platform insert with cushions (209, 230, 257, 283, 306, 336, 366); sun platform insert with cushions (205, 225, 255, 275, 285, 307, 335)





## Canyon 336

33' Center Console

**Beam Amidships: 11'7" (3.53 m)**

**Bridge Clearance: 8' (2.44 m)**

**w/T-top: 9'2" (2.79 m)**

**Center Line Length: 33'6" (10.21 m)**

**Cockpit Area: 80 sq. ft. (7.4 m<sup>2</sup>)**

**Cockpit Depth: 29" (0.74 m)**

**Hull Draft: 25" (0.64 m)**

**Maximum HP: 700 (522 kW)**

**Outboard Shaft Length: 25" (0.64 m)**

**Standard Fuel Capacity: 350 gal. (1325 l)**

**Transom Width: 10'6" (3.20 m)**

**Weight w/o Engines: 9200 lb. (4173 kg)**

### STANDARD FEATURES

#### Safety

2 automatic bilge pumps (total 3000 GPH) (11356 LPH)  
Basic flotation  
Bow rail - low profile 316 grade stainless steel  
Cockpit toe rails  
Console grab rail (2)  
Fire extinguisher holder  
Nonskid fiberglass liner  
Self-bailing cockpit w/cockpit drains (6)  
Stainless steel through-hull fittings

#### Cockpit & Deck

100% hand laid hull & deck  
Anchor windlass w/remote switches at helm & windlass  
Battery charger  
Battery select switches w/extra batteries  
Cleats - flush mount (pop up)  
Cockpit bolsters  
Cockpit freshwater shower (recessed)  
Cockpit lights - LED lighting  
Cutting boards (2)  
Deck hardware - 316 grade stainless steel through-bolted  
Dockside power w/galvanic isolator  
Drink holders - stainless steel (7)  
Factory engine pre-rigging  
Fish box - 165-qt. (156.1 l) port & starboard insulated fish boxes w/ob drain  
Fish box - 291-qt. (275.4 l) aft insulated fish box w/cb drain  
Forward bolsters  
Fuel capacity - 350 gallons (1325 l)  
Hydraulic trim tabs w/indicator & retract  
Integrated outboard mounting system w/swim platform & ladder  
International lighting  
Rod holders (6)  
Rod storage racks - horizontal (6)  
Rubrail - high density PVC w/stainless steel insert  
Seating - fold away aft bench seat w/cushion

Seating - port & starboard fish box cushions  
Stem eyes - heavy-duty 316 stainless steel  
Storage - aft transom drop in box  
Storage - forward anchor locker w/rode storage  
Storage nets  
Transom door - fiberglass  
Washdown - freshwater  
Washdown - pressurized raw water w/hose (2 outlets)  
Water tank - 44-gallon (166.6 l) freshwater

#### Console

Accessory outlet - 12V (2)  
Berth  
Compass  
Console ventilator  
Drink holders - stainless steel (3)  
Head - lockable console w/stand up head area, dome light, shower, sink, bulk storage, drawers & VacuFlush® head, 10-gallon (37.9 l) holding tank and pump out  
Rod storage - vertical lockable storage for 6 rods  
Seating - molded forward console seat w/cushion (3)  
Steering - hydraulic tilt  
Steering wheel - 316 grade stainless steel  
Stereo system w/MP3/auxiliary audio connections/amplifier & fold down storage - satellite ready; speakers - console forward (2) & helm (2)  
Storage - electromechanically operated electronics enclosure  
Storage - lockable acrylic console door  
Storage - under footrest  
Storage pockets (3)  
Window - opening window w/screen  
Windshield - tempered glass windshield  
Windshield washer - freshwater  
Windshield wiper

#### Deluxe Lean Bar

Knife & pliers holders (2)  
Livewell - 45-gallon (170.3 l) insulated raw water livewell w/light, full column distribution inlet & ob drain (1100 GPH pump) (4164 LPH)  
Rigging station - lean bar station w/freshwater washdown & 104-qt. (98.4 l) cooler  
Rod holders (6)  
Seating - lean bar mounted Deluxe III helm chairs w/footrest & flip-up bolsters (3)  
Storage - lockable bulk storage  
Storage - lockable tackle drawers

#### OPTIONAL FEATURES

Air conditioning - 6,000 BTU in console w/2 outlets at helm  
Bow thruster  
Casting platform insert w/cushions  
CE certification package  
Freezer - refrigerator/freezer fish box w/digitally controlled thermostat & ob drain  
Generator - 4kW diesel, 12-gal. (45.4 l) fuel capacity  
International AC electrical conversion - 220V 50Hz  
Lighting - underwater LED (3)  
Livewell - 26-gal. (98.4 l) livewell (replaces lean bar cooler)  
Microwave  
Outrigger kit - 15-ft. (4.6 m) radial T-top mounted (requires T-top option)  
Painted hull  
Painted lean bar rod holders

Painted T-top frame (requires T-top option)  
Sirius satellite radio system  
Steering - power assist (standard w/TF300 & TF350 pkgs)  
T-top (fiberglass) w/radio box, antenna flats, dome light, storage net, fore/aft spreader lights, rod holders (5), outrigger plates & stereo speakers (2)  
Table (bow)  
Water heater - 6 gal. (22.7 l) (includes hot water cockpit shower)

#### CANVAS OPTIONS

(Available in ivory or navy)  
T-top front, side & wing curtains



## Express 360

36' Express Cabin

**Beam Amidships: 13'2" (4.01 m)**

**Bridge Clearance w/Hardtop: 10'6" (3.20 m)**

**Center Line Length: 36'7" (11.15 m)**

**Cockpit Area: 96 sq. ft. (8.9 m<sup>2</sup>)**

**Cockpit Depth: 28" (0.71 m)**

**Hull Draft: 29" (0.74 m)**

**Length Overall (w/pulpit): 39'3" (11.96 m)**

**Maximum HP: 1050 (783 kW)**

**Outboard Shaft Length:**

**Port & Starboard Engines: 25" (0.64 m)**

**Center Engine: 30" (0.76 m)**

**Standard Fuel Capacity: 370 gal. (1401 l)**

**Transom Width: 11'4" (3.45 m)**

**Weight w/o Engines: 14,919 lb. (6767 kg)**

### STANDARD FEATURES

#### Safety

2 automatic bilge pumps (total 3000 GPH) (11,356 LPH)  
Basic flotation  
Bow rail - 316 grade stainless steel  
Cockpit toe rails  
Companion hand rails  
Fire extinguisher holder  
Nonskid fiberglass surfaces  
Self-bailing cockpit w/cockpit drains (6)  
Stainless steel through-hull fittings

#### Cockpit & Deck

100% hand laid hull & deck  
Accessory outlet - 110V outlet  
Accessory outlet - 12V (2)  
Air conditioning - 16,000 BTU at helm  
Anchor windlass w/chain & rode w/remote switches at helm & windlass  
Batteries (5)  
Battery charger system (2)  
Battery select switches w/extra batteries  
Bow pulpit w/roller  
Bow thruster  
Cleats  
Cockpit bolsters  
Cockpit freshwater shower (recessed) (hot & cold)  
Cockpit lights - LED lighting  
Compass w/light  
Cooler - 55-qt. (52.0 l) port side refrigerator/freezer cooler w/digitally controlled thermostat & ob drain  
Deck hardware - 316 grade stainless steel through-bolted  
Dockside power w/galvanic isolator & 30 amp service outlets w/shore power cords (2)  
Dockside water inlet

Drink holders - stainless steel (10)  
Factory engine pre-rigging  
Fighting chair reinforcement area  
Fish box - 291-qt. (275.4 l) aft refrigerator/freezer fish box w/digitally controlled thermostat & ob drain  
Footrest - helm  
Fuel capacity - 370 gallons (190-gallon tank, 180-gallon tank) (1401 l)  
Generator - 8 kW diesel, 23-gallon (87.1 l) fuel capacity  
Hardtop w/storage net, recessed spreader lights, recessed stereo speakers, rod holders (6 horizontal, 6 vertical), outrigger plates, low profile acrylic hatches (2) & drop, front and side curtains (navy or ivory)  
Hydraulic trim tabs (recessed) w/indicator & retract  
Integrated outboard mounting system w/swim platform & stainless steel telescoping ladder  
International lighting  
Livewell - 48-gallon (181.7 l) starboard insulated raw water livewell w/light, full column distribution inlet & ob drain (1100 GPH pump) (4164 LPH)  
Rigging station w/freshwater sink, pullout faucet, insulated bait box, knife/pliers/bait rigs holder & lockable drawers (4)

#### Rod holders (4)

Rod storage racks - horizontal (6)  
Rubrail - high density PVC w/stainless steel insert  
Seating - Deluxe Platinum vertically & horizontally adjustable helm chair w/flip-up bolster  
Seating - fold away aft bench seat w/cushion  
Seating - port lounge seat w/enclosed storage below  
Seating - starboard lounge seat w/convertible configurations & hideaway folding table  
Steering - hydraulic tilt w/power assist  
Steering wheel - 15-in. (38.1 cm) 316 grade stainless steel  
Stern eyes - heavy-duty 316 stainless steel  
Storage - chart storage at helm  
Storage - drawers under starboard seat (2)  
Storage - electromechanically operated electronics enclosure  
Storage - removable transom storage bin  
Storage - under helm footrest  
Storage net  
Transom door - fiberglass  
Washdown - freshwater  
Washdown - pressurized raw water w/hose (forward & aft)  
Windshield - heavy duty welded aluminum windshield w/tempered glass & electromechanically operated center vent  
Windshield washers - freshwater (3)  
Windshield wipers - self parking w/heavy-duty pantograph arms w/separate controls (3)