



# AZAD.M

**Trisbal 42 - Centerboard aluminium sailboat - 1980 - 96'000 US\$**



*Azad M*

## Trisbal 42

Magnificent, long-haul, weighted aluminum sailing vessel. Two hydraulic daggerboards. Round-the-world equipped and meticulously maintained. Robust construction for long-distance cruising, with teak interiors for a warm atmosphere and modern comfort features. Excellent sea-handling, balance at the tiller and good speed on the water. Full autonomy, thanks to numerous solar panels, a new battery and an almost new watermaker.

Length: 42ft. - length at waterline: 31ft - beam: 13ft - weight: 10.5 tons - depth high daggerboards: 3.2ft - depth low daggerboards: 6.6ft.

## History

The Trisbal 42 was designed by Jean-Pierre Brouns and built in 4 units. This one is the 3rd. The first took part in the 1978 Route du Rhum, skippered by Daniel Gilard (via insurance).

The first owner had this 3rd unit built by Chantiers Fecamp in France in 1980. Legend says that he couldn't swim, so he had a bathtub installed to take seawater baths. His sailing schedule is not known. The boat was then called AZAD-M.

The second owners sailed as a family around the Atlantic for 7 years with their three children. The boat was then stored in a boatyard for 5 years. They renamed the yacht Îles et Ailes.

The third owners bought her in Brittany in 2012 and prepared her for a round-the-world trip with their family, while living aboard, which will finally never happen. We owe them the installation of a new engine and a new non-slip paint finish on the deck (kiwi grip style). They also renamed the boat Kubutani.

Taken in hand by us in 2015 and prepared for a round-the-world trip starting in 2018, we made her our home and sailed across two oceans. Renamed with her baptismal name, AZAD.M will have taken us from Marseille to Papeete via Brittany, the Canaries, Cabo Verde, Dominica and Grenada, Panama, the Galapagos, the Marquesas and the Tuamotu. We had prepared the boat for a return to France via the Patagonian canals this winter, but life's surprises: a baby sailor to be born made us change our plans. So we stop here, even though AZAD.M is ready for many more miles.



# 01 | General maintenance and major work

Between 2012 and 2015, the previous owners carried out the following work:

installation of a new engine and changes of all its peripherals  
repainting of the deck and application of "kiwi grip" anti-slip paint  
repair of plumbing and electricity (12v. and 220v), installation of a leak detector on the hull

After our purchase in 2015, we carefully prepared our round-the-world trip during the winters at the yard and sailed the Mediterranean during the warmer seasons.

Waterproofing and beauty:

all deck panels changed to Plexiglas (12mm). The boat is perfectly waterproof! (2016)  
interior varnish refit (2016)  
interior upholstery in Sunbrella marine (2021)

Hull:

removal, sandblasting and insulation of both daggerboards with epoxy paint (2017)  
overhaul of hydraulic cylinders, replacement of Teflon bushings on shafts and installation of shims in daggerboard wells (2017)  
hull sandblasted and insulated with epoxy paint (2019)  
change of hull anodes and annual refit (last in March 2023)

Interior refurbishment:

overhaul of water tanks: cleaning, sanding, derusting, recharging and epoxy paint insulation with food-quality aluminum structural tanks (2020)  
new 220am service battery (2023)





azad.m

#### Exterior fittings:

construction of two fixed aluminum structures for a new bimini and sprayhood (2020)  
installation of a new park of solar panels (900w) and VictronConnect MPPT (2021)  
replacement of mast track with Teflon sliders (2015)  
new running rigging (2018)  
pre-2012 mixed standing rigging, 2019 (stay and backstays), 2022 (lower stays)

#### Engine:

new propeller shaft (2023)  
replacement of silent blocks and realignment of shaft and engine block by a yard (2023)  
annual filter change

## Hull

Aluminium AG4MC with rounded edges, mixed structure (frames and stringers)

Plate thicknesses: - bottom plate 16mm - keel box cheeks 8mm - daggerboard wells 5mm - daggerboards 25mm - hull bottom, bilge, three-cone bow 6mm - bulkhead and transom 5mm - deck, roof, cockpit 4mm - profiled rudder with positive buoyancy 3mm.







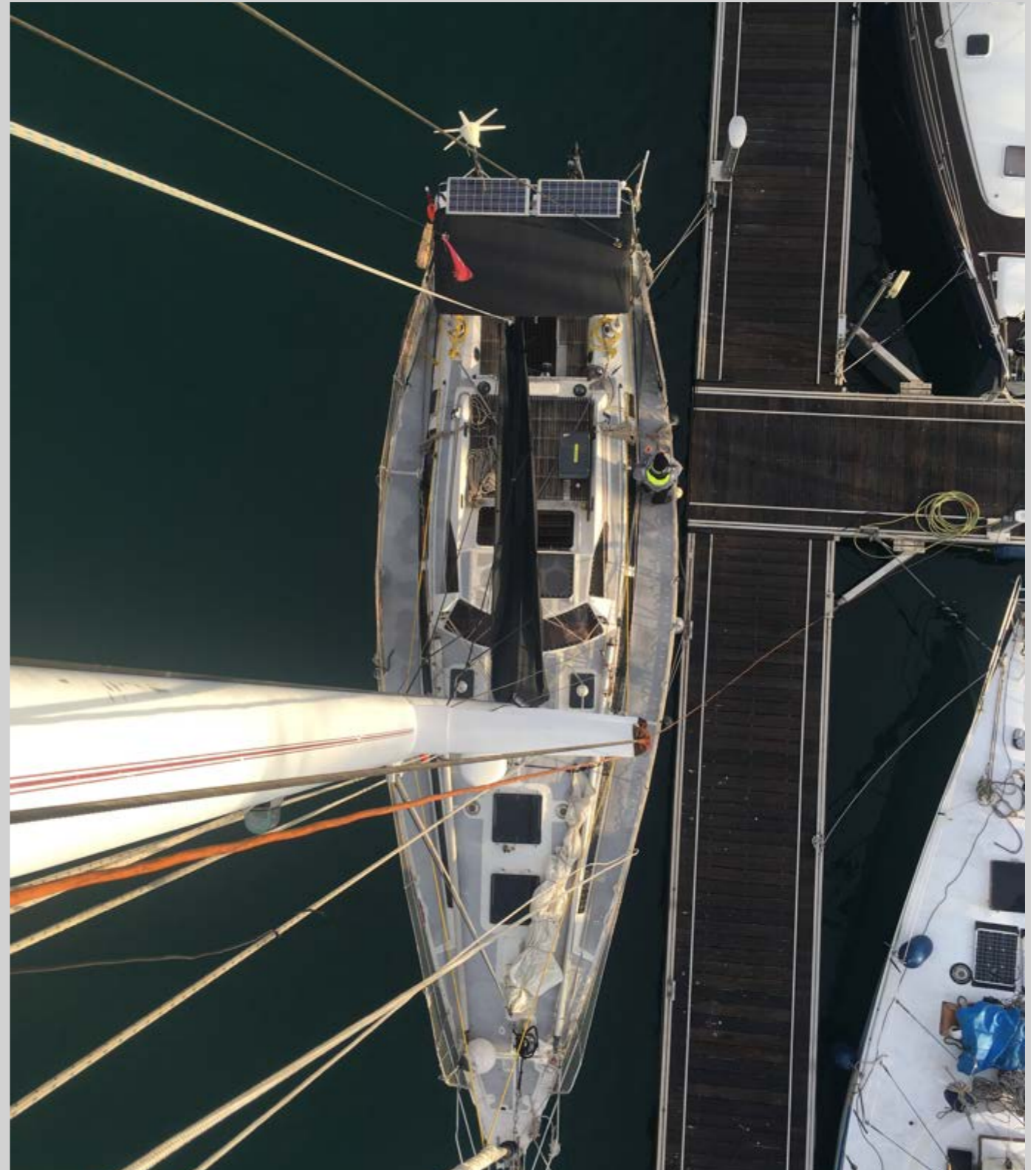
### Double cockpit

Extremely comfortable both at sea and at anchor, the double cockpit is a success of this special architecture.

Deep and protected by the fixed bimini structure, the first cockpit houses the tiller, 6 large Enkes winches for the headsails and mainsail, hydraulic daggerboard controls and the Hydrovane windvane steering system.

Everything you need for single-handed maneuvering is at hand.

The second cockpit is ideal for sitting or lying down, sheltered from the spray. A deck saloon protected by awnings at anchor, it's almost as comfortable as a catamaran to welcome friends and family.









ENKES Safetelling 2-speed winches, regularly serviced, in good condition:

In cockpit: 2 yankee sheet winches type AR36, 2 staysail sheet winches type AR20ST, a small ST 1-speed winch for furling and 1 mainsheet winch type AR22ST.

At the foot of the mast: 2 mainsail and 1 yankee halyard winches type AR22ST, one staysail halyard winch type AR20ST and one reefing winch type AR20ST.



Lecombe & Schmitt hydraulic cylinder caught on rudder, slight leakage

Serves the inner hydraulic steering wheel and both inner and outer auto-pilots.







At the back of the cockpit are two very large lockers. Watertight when closed, they serve as crash boxes as well. A hatch on the transom allows the ejection of a Grab Bag, for example. The small teak skirt allows easy access to the water and easy ascent with a step directly fixed onto the rudder.



Safety equipment is complete and up to date. The Sea Safe 6-person liferaft was revised in 2022. An IOR pole and an EPIRB complete the equipment.



# 3

## Moorings

Main mooring:

1 Spade anchor 20kg  
90m 10mm chain (2022)

Secondary moorings:

2 toggle anchors  
1 ploughshare anchor

Windlass Lofrans Tigre 1000w  
Spare repair kit and coals on board

Dinghy:

Flat-bottomed aluminum and hypalon  
Mini Zar (2021)  
Sunbrella marine cover (2022)

Yamaha Enduro 15hp engine. Starts at  
a quarter turn.



Cutter rigged, the basic wardrobe consists of a half-battened mainsail, a furling yankee and a staysail to hoist on the small stay.

On board, numerous sails ensure fast sailing and a boat that's always balanced, thanks to its double daggerboards and its ballasted half keel.

- large, light genoa
- asymmetric spinnaker (new) in its sock
- symmetrical spinnaker
- two tourmentins
- an old mainsail
- two outriggers



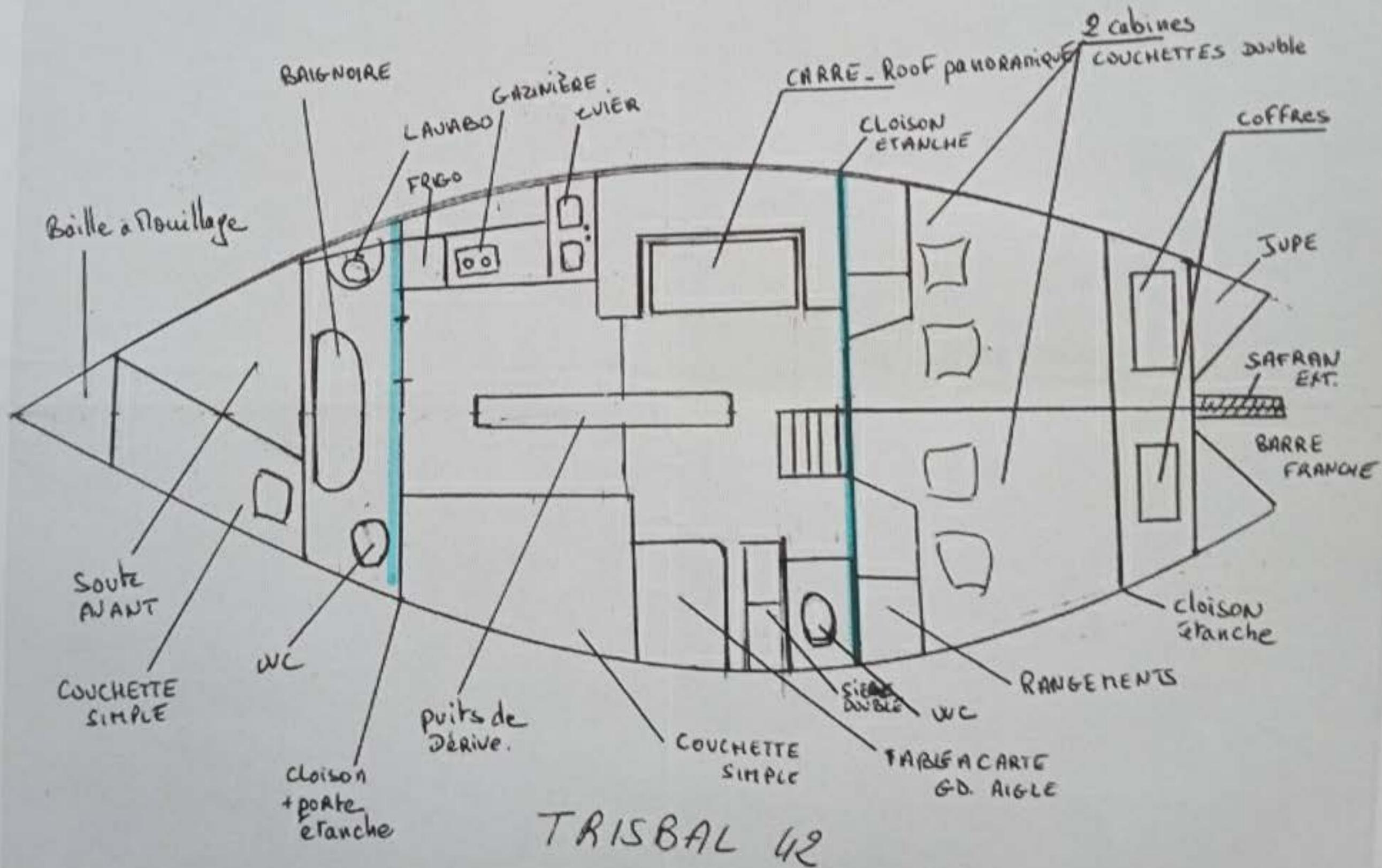


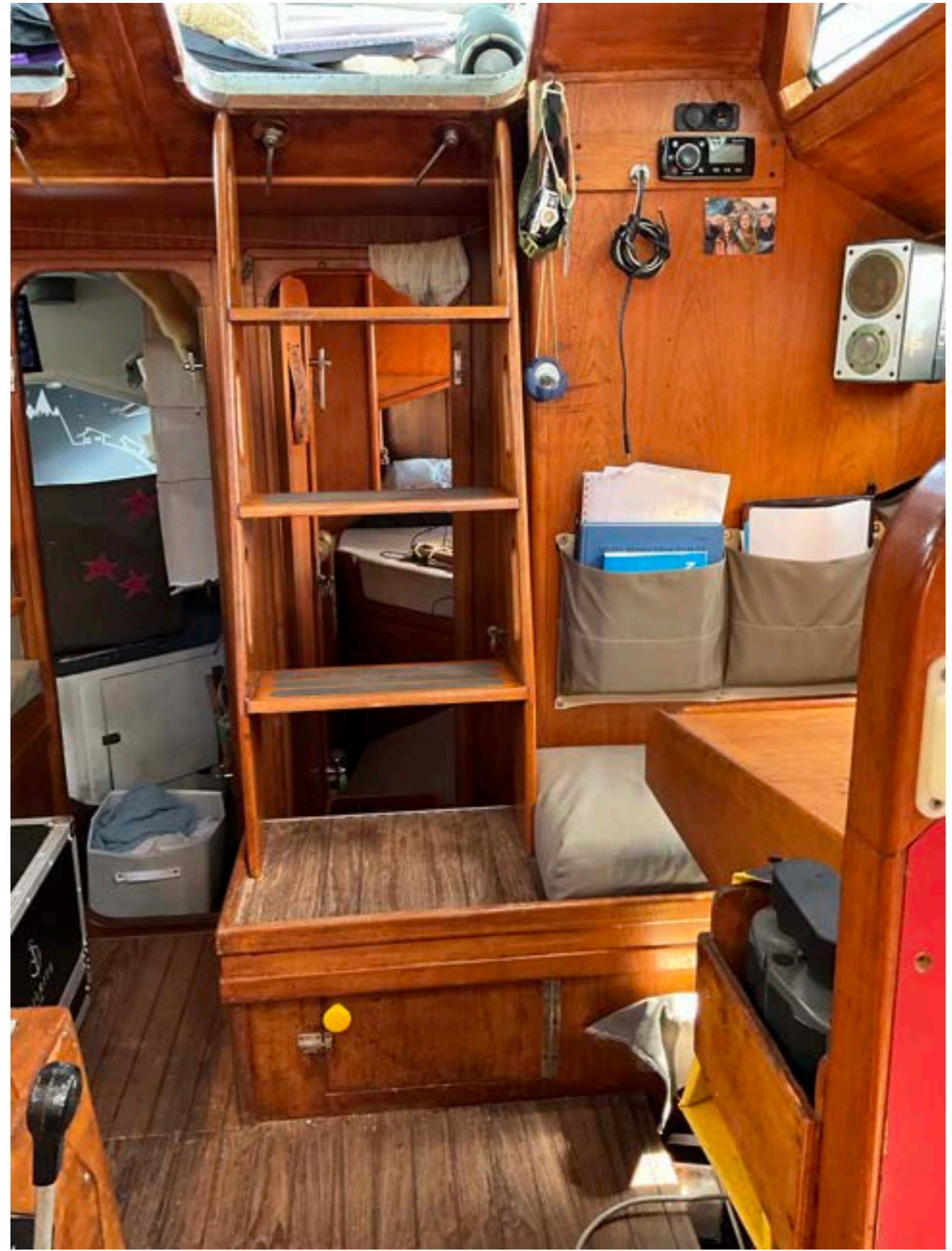






# 5 Interior fittings







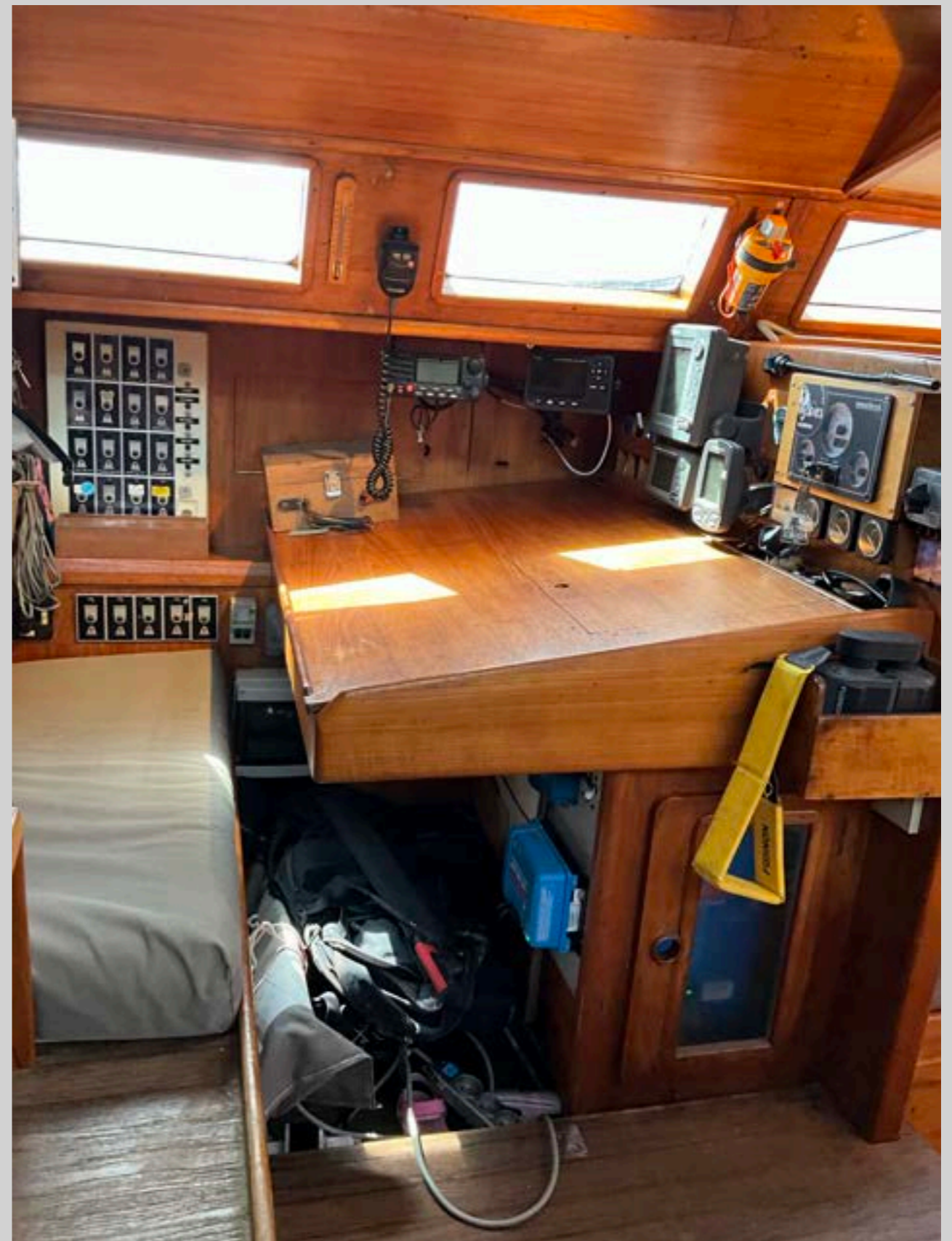
## Navigation

Raymarine ST4000+ autopilot on  
inboard hydraulic wheel helm  
BG autopilot on tiller to be repaired or  
replaced  
Lecombe & Schmitt hydraulic cylinder  
caught on rudder, slight leak

Furuno 1623 radar  
Furuno GP-32 GPS  
Garmin 73 portable GPS  
AIS Class A ICOM MA 510-TR  
Lowrance X50DS depth sounder  
BG H1000 control unit, anemometer  
and windvane, compass, depth  
sounder, logs

1 Standard Horizon GX2200E fixed VHF  
1 ICOM portable VHF

SSB ICOM IC-720F (to be installed)





Kitchen  
3-burner gas stove with Force 10 oven (2022)  
BD35F cooling unit  
Flexible grey water tanks with drain pump



## Bathroom

Washing machine 3kg, cold cycle 300w, 25litres (2020)

Lavac popular toilet (manual pump from 2020)

Bathtub with drain pump

Quick Boiler B3 water heater

Camping toilet in place of black water tank

Fresh water tanks: 800 liters

Watermaker Spectra Ventura 150 25l./hour - 7amh - 2022



3 double cabins  
1 shift bed

Back port cabin



Back Starboard cabin



Forward cabin (Breton bed after bathtub)

## Electricity

Complete bipolar installation

Electrical leak detector

220V electrical circuit (original cables)

Victron isolation transformer 3600w

230v and 115v

860w solar panels

Battery monitor BMW 702 Victron +  
Bluetooth dongle (2018)

2 Victron MPPT solar controllers

- 100/50 Bluetooth (2021)

- 75/15 (2012) + Bluetooth dongle

Watertight stainless steel battery box  
with vent

AGM 220Ah service battery (2021)

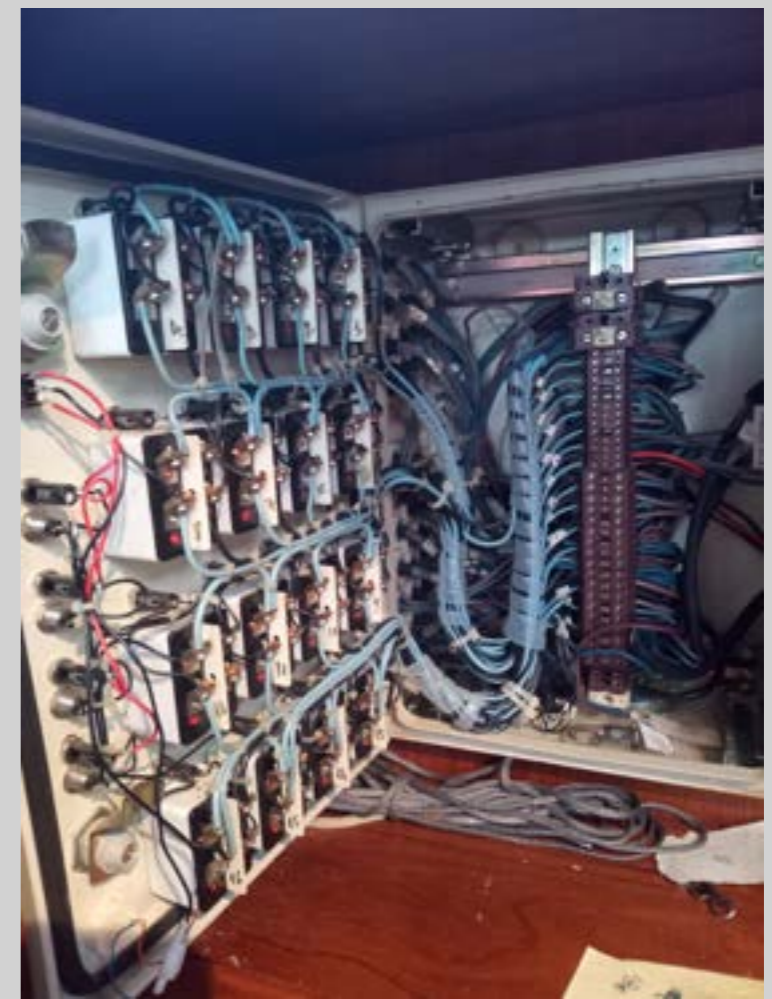
110Ah motor battery (2019)

Cyrix Victron installed but  
disconnected

Sterling power 1240 40A shore  
charger

Converter 220V/12V Victron 2000W  
(2021)

Converter 220V/12V Sterling power  
300w (2021)



# 6

# Engine

Nanni diesel N4.50 from 2012, 1300 hours, serviced every year

Exhaust 2018

Propeller shaft 2023

Filters and spare parts on board

Fuel tank: 500l.



## 7 Flag and administration

SWISS FLAG

VISIBLE IN MOOREA

PRICE, AVAILABILITY AND TAXES  
TO BE DISCUSSED.



SPINNAKER  
-ONE.COM





AG4MC aluminum weighted centerboarder with two manually-operated hydraulic daggerboards  
1980 boatyards Fecamp, Toulon, France

Length: 42ft.  
Length at waterline: 31ft  
Beam: 13ft  
Weight: 10.5 tons  
Depth high daggerboards: 3.2ft  
Depth low daggerboards: 6.6ft.

Interior and furniture are teak  
All lighting are LED  
Two waterproof compartments (crash bulkheads)  
Three double cabins  
Hull is insulated with polyester foam, beautiful brightness thanks to its many ports (2017)  
Many lockers and storage compartments  
Taylor Fuel Stove for heating  
Washing machine 3kg, cold cycle, uses 300watts and 25litres of water (2020)  
3-burner stove with oven Force 10 (2022)  
Fresh water tank 800L  
Spectra 25L per hour desalinator watermaker, uses 7ah (2022, revised 2023)  
Two electric water pump and a foot pump  
A bathtub/shower with drain pump  
Water heater Quick Boiler B3 cold group BD35F  
Soft gray bladder water tanks with drain pump  
Lavac popular (manual pump of 2020)

Sails rigging in the coast (Yankee / staysail) was 2019, lower shrouds of 2022  
1 GV/mainsail Dacron semi-slatted with 3 reefs Good condition (2013)  
1 GV/mainsail Dacron, used  
1 Yankee on furler, Good condition  
1 Sanquette to be frenzied, Good condition  
1 Genoese light, Good condition  
2 Tourmentins, Good condition  
1 new Asymmetrical spinnaker with sock  
1 Symmetrical spinnaker of 160m2

2 TANGONS

ENEKES WINCHES, two-speed stainless steel self tailing winches

BIMINI upholstery in 2022  
The bridge has welded aluminum cover  
Cockpit cushions in Sunbrella Marine 2022  
Sunbrella Marine interior upholstery 2022

2012 NANI DIESEL 4.50 engine, 1300 hours, revised exhaust in 2018  
Propeller shaft 2023  
All spare parts required on board  
Fuel tank: 500L.

RAYMARINE ST4000 + autopilot navigation on internal hydraulic wheel LB autopilot on free bar (back up) to repair or change

LECOMBE & SCHMITT cylinder taken from SAFRAN, light leakage

Hydrovane Allure Regulator (2019)  
FURONO 1623 GPS  
FURONO GP-32 GPS portable  
GARMIN 73 AIS class  
Ais class A ICOM MA 510-TRONE  
LOWRANCE X50DS BG H1000, anemometer and weather vane, compass, depth sounder, Lochs  
1 VHF Fixed Standard Horizon  
1 VHF Portable  
ICOM Blu ICOM IC-720F (to install)

Electricity Complete bipolar mounting  
Electric leak tester Electric circuit 220V (original)  
900W solar panels  
BATTERY MONITOR VICTRON  
regulators VICTRON MPPT

Battery with stainless steel battery AGM 220AM service  
battery vent (2021) 110AM engine battery (2019)

Sterling Power 1240 40A charger 12V / 220V Converter  
Victron 2000W 12V / 220V 300W

Safety Security Sea Safe 6 People life raft (revised in 2022)  
IOR pole  
Epirb (valid until dec. 2028)  
Equipment Mandatory up to date

1 anchor spade 20kg  
2 anchors Rocking  
1 anchor plowshare 90m. Channel 10 (2022)  
TIGRE LOFRANS WANDER 1000W windlass

MINI ZAR dinghy WITH SUNBRELLA + COVER (2021) chaps.  
HB YAMAHA ENDURO 15CV engine

Swiss pavilion, non-Papeetized (to be discussed)  
4th hand, extremely well maintained

available and visible in Tahiti / Moorea