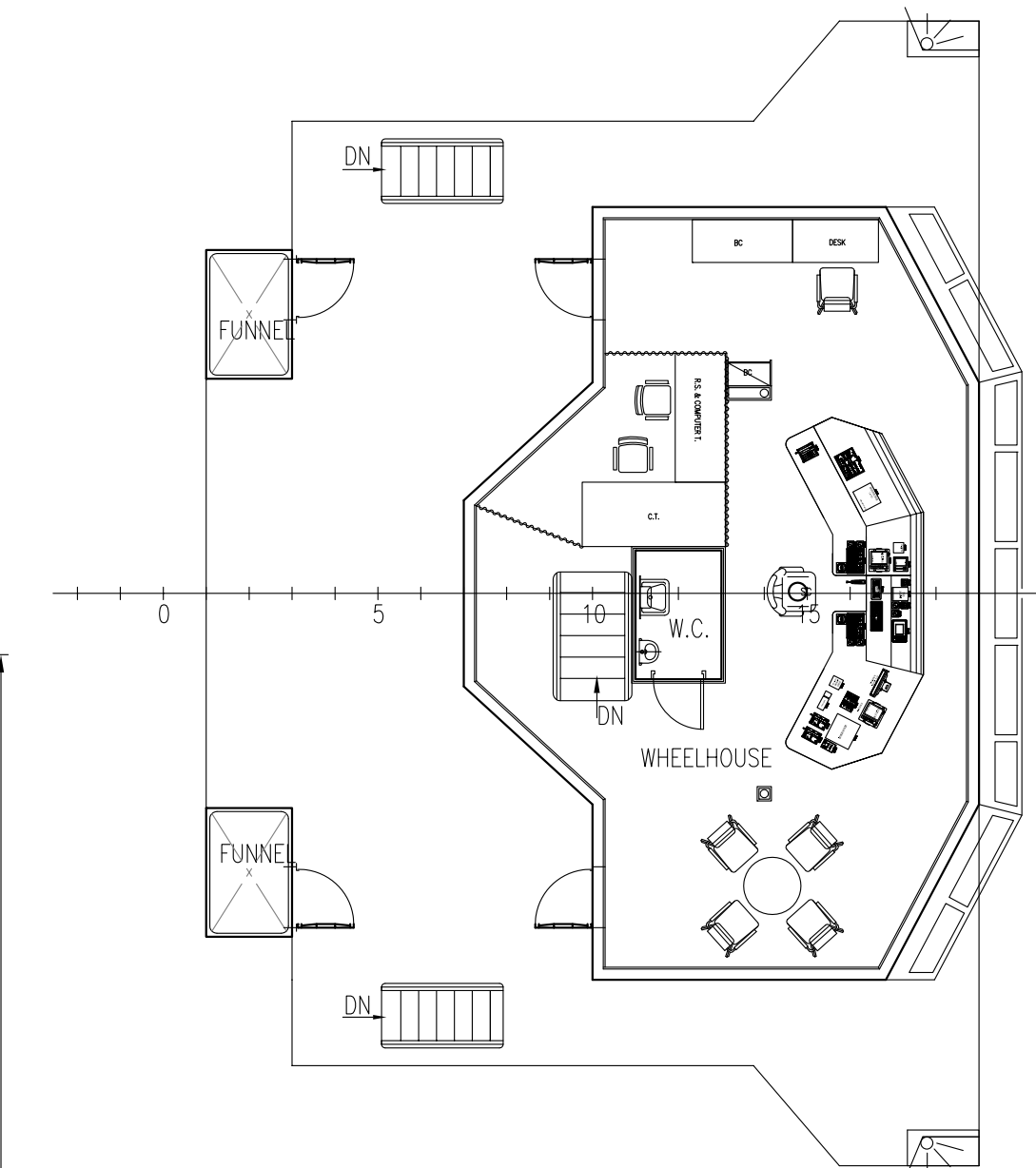
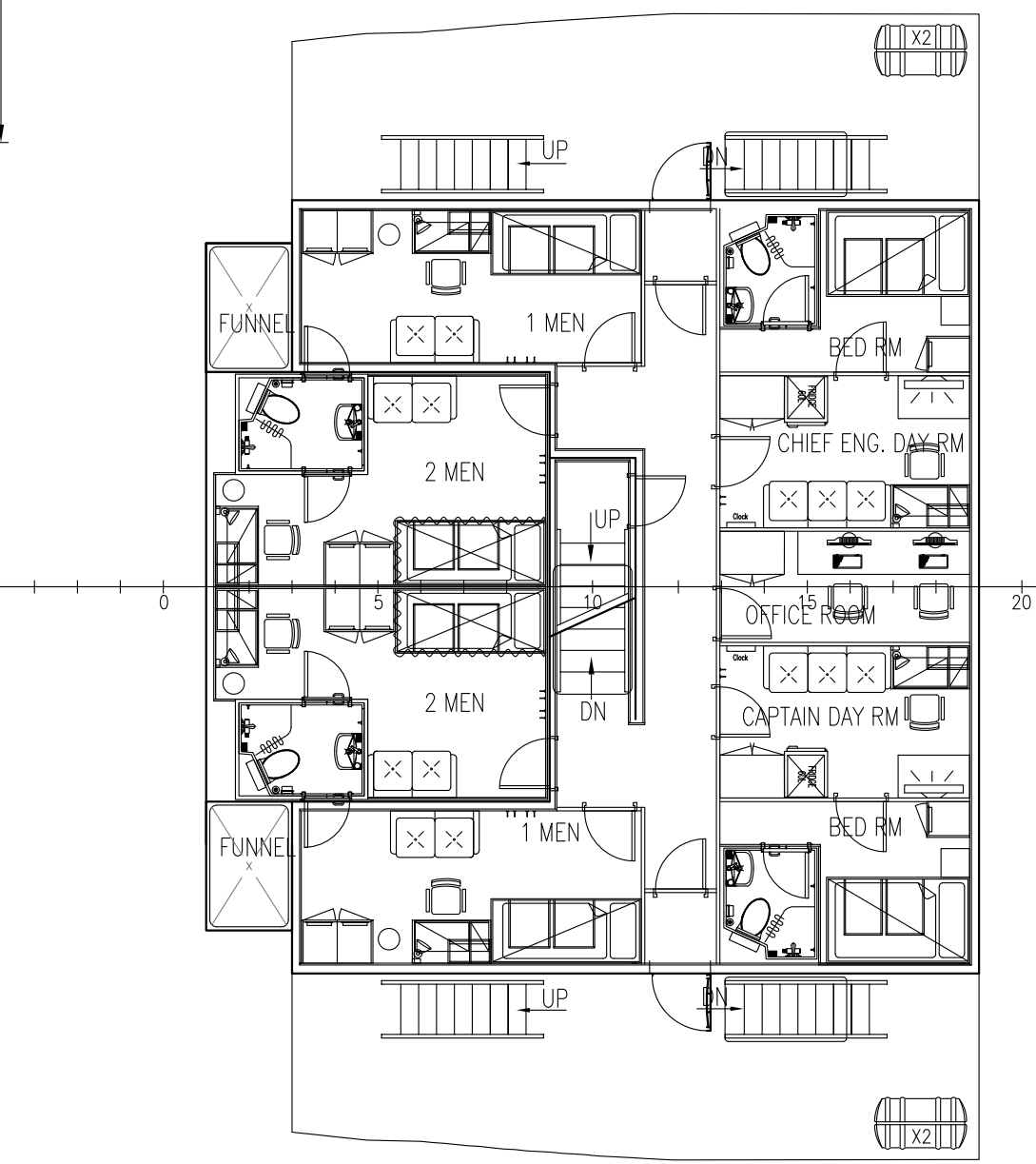


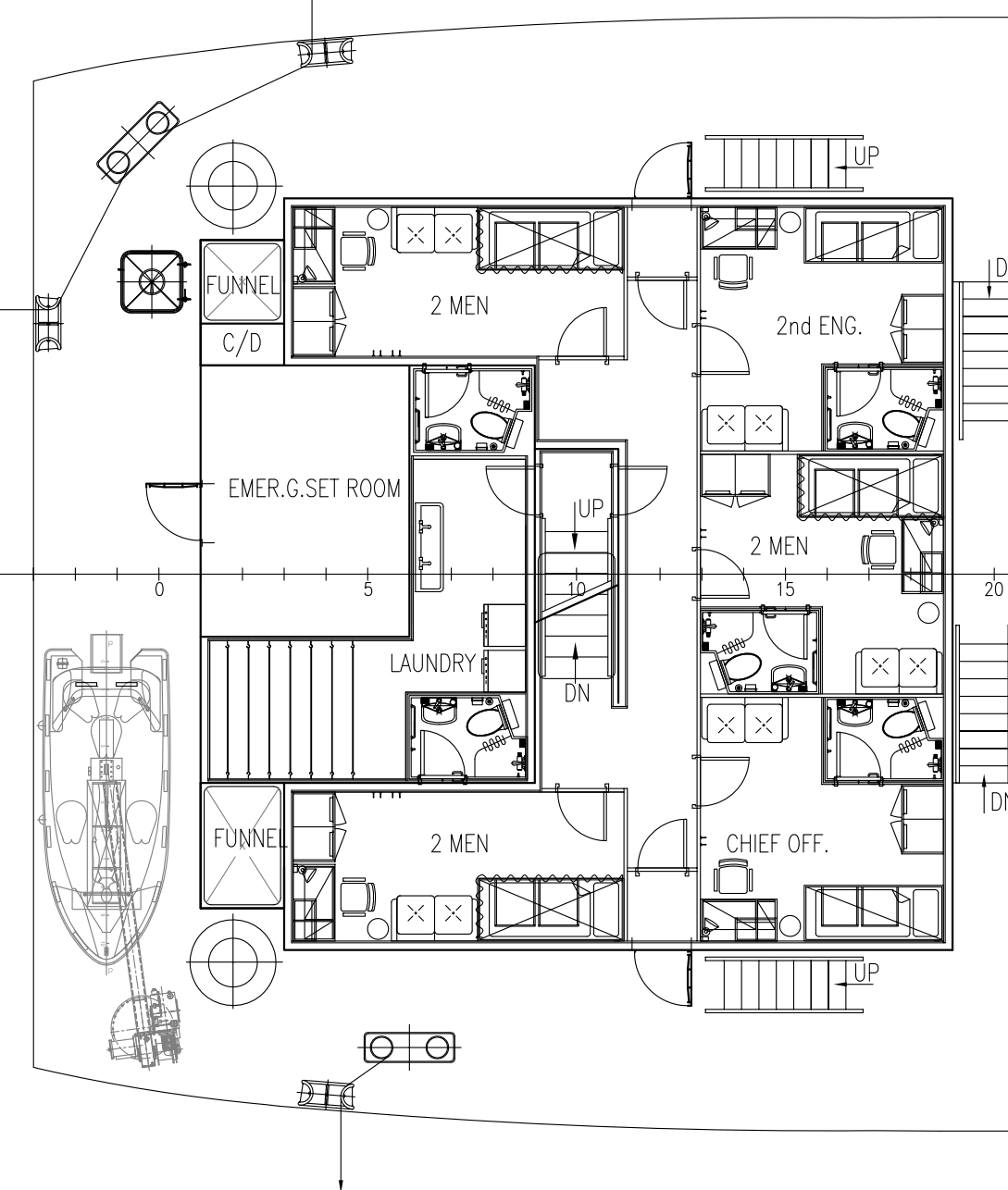
COMPASS DECK



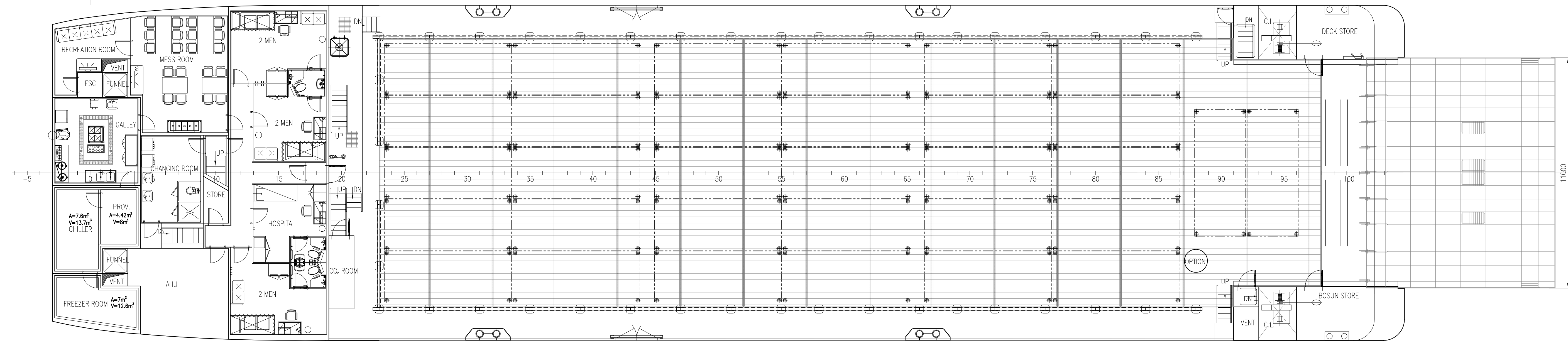
BRIDGE DECK



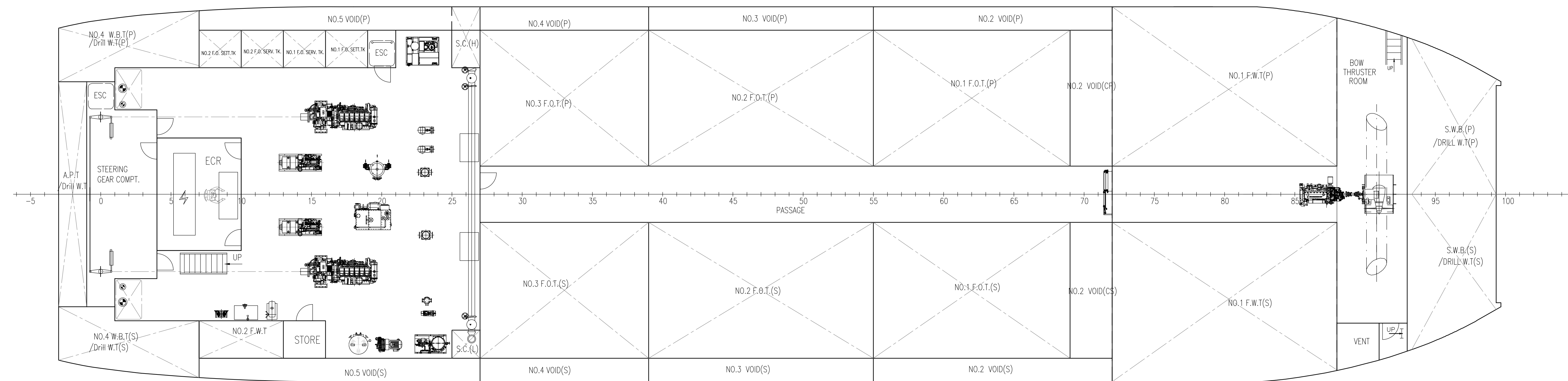
CAPTAIN DECK



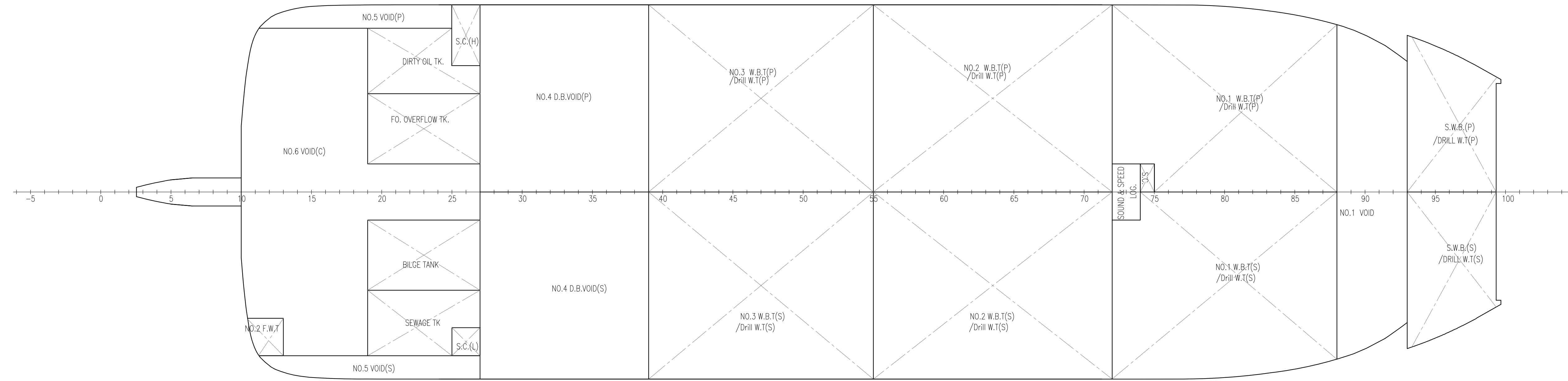
POOP DECK



MAIN DECK



TANK TOP



DOUBLE BOTTOM

PRINCIPAL DIMENSION

LENGTH OVERALL	abt 65m
LENGTH (P.P.)	60.80m
BREADTH (mid).	16.00m
DEPTH (mid).	4.50m
DESIGN DRAFT (mid).	2.80m
SCANTLING DRAFT.	3.50m
COMPLEMENT	22P
CONTAINER	79TEU

DEAD WEIGHT(SCAN.DRAFT) 1900 m.t (APPROX.)

SERVICE SPEED@85%MCR ~10kn

BALLAST WATER	772 m ³
FRESHWATER	456 m ³
FUEL OIL(domestic)	307 m ³
FUEL OIL(cargo)	689 m ³

CLASS:

RINA C*Deck Cargo Ship (equipped for carriage of containers)
Unrestricted Navigation

DATE	REV	MODIFICATION	X	BY
PRELIMINARY	FOR OWNER APPROVAL	FOR CLASS APPROVAL	FOR CONSTRUCTION	AS BUILT
船东 OWNER				
建造厂 BUILDER				
GENERAL ARRANGEMENT	65M LANDING CRAFT	编号	阶段	送审设计
		编号	修改	
		设计	审核	
		制图	校对	
		比例	1:100	面积 1.0 m ²
		版本	A	共 1 页 第 1 页

会 签

审核

制图

底图