



Insurance Risk Survey

Riviera, 3350 Flybridge, 2001



Survey Details

Survey type:	Insurance Risk Survey
Survey No#:	IRS250107
Client:	██████████
Email:	████████████████████
Inspection date:	7th January 2025
In-Water location:	SYC, Sandringham, Victoria
Out-Water location:	SYC, Sandringham, Victoria

Contents

Disclaimers	2
Areas	3
Hull Specifications	3
Hull Structure	4
Seacocks / Thru-hulls	6
Cockpit & Superstructure	6
Interior	7
Deck, Hardware & Fittings	9
Main Engines & Propulsion	10
Driveline	12
Steering & Manoeuvring	13
Fuel Systems	14
Plumbing Systems	14
Electrical Systems	15
Gas System	16
Navigation & Communication	16
Bilge Pumps	17
Safety Equipment	18
Valuation	19
General Summary	20
Actions	20

Disclaimers

SCOPE OF SURVEY

The purpose of the survey is to ascertain the general condition and/or value of the vessel to assist the marine hull insurer in evaluating the insurance risk of the vessel.

This survey should not be used for the purpose of making a purchase decision on the named vessel. This vessel was surveyed without removals of any parts, including fittings, tacked carpet, screwed or nailed boards, anchors and chain, fixed partitions, instruments, spare parts, and miscellaneous material.

Locked compartments or otherwise inaccessible areas would also preclude inspection. If this survey does not mention a specific item, equipment or machinery, it has not been inspected or included as part of the survey scope.

The test methods used are of a non-destructive in nature, which may include Thermal Images, Moisture Meter readings, Ultrasound and Digital Photos throughout the survey where the surveyor has deemed appropriate and will be documented in the report if the findings prove to be notable.

Furthermore, no determination of stability characteristics or inherent structural integrity has been made and no opinion is expressed with respect thereto. Electrical and electronic systems tested by means of powering up only when power is available. If power is not available, visual inspections only are performed.

Engines, drives, mechanical and plumbing systems are inspected visually for signs of defect and deterioration. The use of Thermal Imaging or Infrared Thermometers may be used in some areas if deemed appropriate, any findings of note will be reported.

Minor defects may have been identified that are not specified in this report, in such circumstances these are considered as normal wear and tear to commensurate with the vessel's age.

Rigging and spars, where applicable, are inspected from the deck only. Sails are generally excluded from inspection unless otherwise stated. It is the vessels master's responsibility to ensure all safety equipment is appropriate for the vessels intended usage.

The survey report is subject to the Deaspec Marine terms and conditions and represents the condition of the vessel on the above date(s), and is the unbiased opinion of the undersigned, but is not to be considered an inventory or a warranty either specified or implied.

DEFINITION OF TERMS

Terms used to identify the condition of item or components unless specifically indicated:

Excellent Condition: New or presenting as new.

Good Condition: Near new, with only minor cosmetic discrepancies sighted.

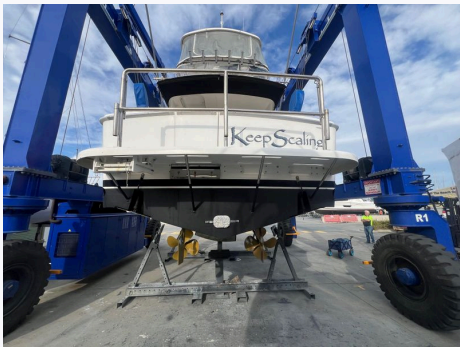
Sound Condition: Useable and appropriately fitted for its intended purpose.

Fair Condition: Functional, however, may require ongoing maintenance or service.

Poor Condition: Requires replacement, repair or reached the end of service life.

1. Hull Specifications

Ref	Item	Description
1.1	Build / Make	Riviera
1.2	Model	3350 Flybridge
1.3	Year Model	2001
1.4	Main Engine (Port)	Cummins: 250hp, 4B-3.9 fresh water-cooled diesel engine. Serial#45658987
1.5	Main Engine (Starboard)	Cummins: 250hp, 4B-3.9 fresh water-cooled diesel engine. Serial#45656901
1.6	Registration	DS5
1.7	Hull Number / HIN	AU-RJH33044C101
1.8	Length (M)	11.44
1.9	Beam (M)	3.82
1.10	Draft (M)	1.05
1.11	Disclaimer:	Specifications stated above are approximate only and provided for informational purposes. The information was received from online data and/or research of similar make and model vessels and are not the measurements taken from the actual vessel.



Ref #1



Ref #1

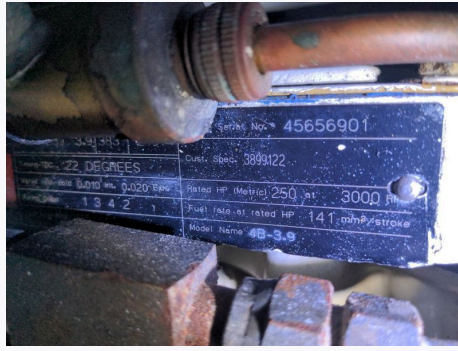


Ref #1

1. Hull Specifications (Cont.)



Ref # 1.4



Ref # 1.5



Ref # 1.6



Ref # 1.7

2. Hull Structure

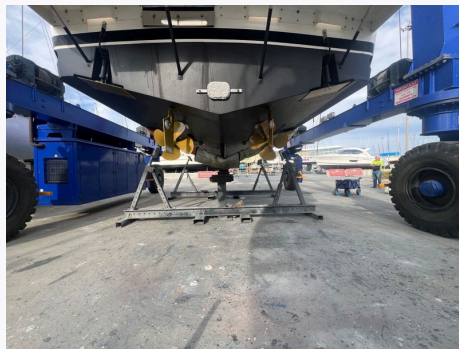
Ref	Item	Material / Construction	Condition	Comments
2.1	Hull Bottom	FRP Composite	Sound	No damage or defect found to the hull bottom, appeared structurally sound throughout.
2.2	Keel	FRP Composite	Sound	
2.3	Bulkheads	FRP Composite	Sound	
2.4	Hull stringers	FRP Composite	Sound	
2.5	Bilge	Flowcoat	Sound	Note: It is important to check all bilges prior and post vessel operation and immediately following vessel launch for water ingress as part of your standard operating procedures.
2.6	Transom	FRP Composite	Sound	

2. Hull Structure (Cont.)

2.7	Hull side / Topsides	Gelcoat / FRP	Sound	
2.8	Gunnel	Aluminium	Sound	
2.9	Bow Stem	Gelcoat / FRP	Sound	
2.10	Skin Fittings	Bronze	Sound	
2.11	Swim platform	FRP Composite	Sound	Some cosmetic wear to edges of platform which is consistent with normal wear tear.
2.12	Antifouling	Black Ablative Application	Good	Being prepared for new antifoul at the time of inspection
2.13	Hull anode	Zinc or Similar	Good	All being replaced with new



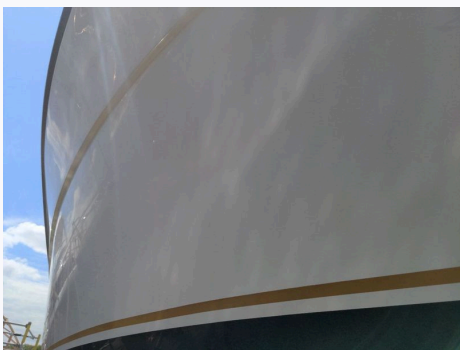
Ref # 2.1



Ref # 2.6



Ref # 2.7



Ref # 2.7



Ref # 2.10



Ref # 2.11

3. Seacocks / Thru-hulls

Ref	Item	Material / Construction	Condition	Comments
3.1	Seacocks	Bronze or similar	Sound	All exercised, appear serviceable. Note: It is recommended that all seacocks and valves be cleaned, inspected and valves exercised at least monthly as part of the vessels maintenance program.; Zeus Drives
3.2	Intake Grills	Bronze or similar	Sound	
3.3	Skin Fittings	Bronze or similar	Sound	
3.4	Transducers / Speed Logs	Thru-Hull Type	Sound	



Ref # 3.1



Ref # 3.1

4. Cockpit & Superstructure

Ref	Item	Material / Construction	Condition	Comments
4.1	Superstructure	FRP Composite	Sound	Flybridge with hardtop and clears, lockable main cabin with open rear cockpit.
4.2	Cockpit Sole	FRP Composite	Sound	Marine carpet overlay
4.3	Combing / Bulwarks	FRP Composite	Sound	
4.4	Seating & Upholstery	Vinyl	Good	Twin Helm seats with flybridge seating. New covers over seating areas.
4.5	Covers & Awnings	Canvas	Good	Rear awning fitted.

4. Cockpit & Superstructure (Cont.)

4.6	Clears	Polyvinyl or similar	Good	Fully enclosed flybridge, near new.
4.7	Bimini Frame / Targa	FRP Composite Hardtop	Sound	Found secure, supported by stainless steel frame.
4.8	Cockpit doors	FRP Composite	Sound	
4.9	Cockpit Drainage	Self Draining	Sound	



Ref # 4.1



Ref # 4.2



Ref # 4.4



Ref # 4.6

5. Interior

Ref	Item	Material / Construction	Condition	Comments
5.1	Interior Frames	Timber Veneer	Sound	Vessel interior appears original and suitably maintained with only minor wear and tear present to commensurate with age.
5.2	Cabinetry & Fitout	Timber Veneer	Sound	
5.3	Headlining	Material Panels	Sound	

5. Interior (Cont.)

5.4	Cabin Sole	Carpet	Sound	Cream carpet with canvas overlay.
5.5	Galley Fitout	FRP Moulding	Sound	FRP moulded galley with solid timber trim.
5.6	Seating & Upholstery	Leather	Sound	



Ref # 5.1



Ref # 5.1



Ref # 5.2



Ref # 5.3



Ref # 5.4



Ref # 5.5



Ref # 5.6

6. Deck, Hardware & Fittings

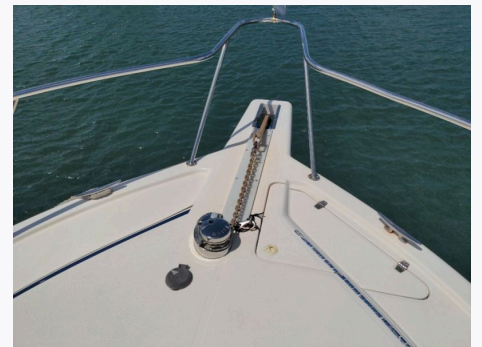
Ref	Item	Material / Construction	Condition	Comments
6.1	Foredeck Structure	FRP Composite	Sound	Deck was found rigid and structurally sound, all hardware appeared to be marine grade quality and secure.
6.2	Deck Finish	Non-skid	Sound	
6.3	Bowrail	Stainless Steel	Sound	
6.4	Stanchions	Stainless Steel	Sound	
6.5	Cleats	Stainless Steel	Sound	
6.6	Hatches	Acrylic or similar	Sound	Appear leak free.
6.7	Windows	Glass or similar	Sound	
6.8	Anchor Winch	12-Volt Electric	Sound	Tested
6.9	Anchor	Plough (Galvanised)	Sound	
6.10	Anchor chain, warp and fittings	Galvanised	Sound	
6.11	Bow roller / Stem head	FRP Composite	Sound	



Ref # 6.1



Ref # 6.6



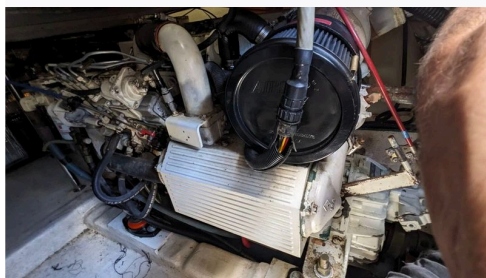
Ref # 6.8

7. Main Engines & Propulsion

Ref	Item	Type / Make	Condition	Comments
7.1	Engine Block	Cummins	Sound	Cummins 4B-3.9 is a 3.9 litre 4-cylinder, 4-stroke, direct-injected, turbocharged marine diesel engine. There are oil leaks in areas around the engine.
7.2	Sump	Pressed Steel	Sound	
7.3	Manifolds	Cast Aluminium	Sound	
7.4	Fuel Delivery System	Fuel Injected	Sound	
7.5	Exhaust System	Reinforced Marine Hose	Sound	Some corrosion present on some hose clamps.
7.6	Exhaust Riser / Elbow	Lagged Pipe	Sound	Note: Exhaust manifolds and risers are a service item and require replacement as recommended by the manufacturer.
7.7	Silencer / Wet lock	FRP Composite	Sound	
7.8	Serpentine Belt	Reinforced Rubber	Sound	
7.9	Pulleys & Wheels	Steel	Sound	
7.10	Engine Bed Frames	FRP Composite	Sound	
7.11	Engine Mounts	Flexible Mounts	Good	
7.12	Cooling System	Closed / Fresh water	Sound	
7.13	Coolant	Blue	Sound	
7.14	Hoses	Reinforced Rubber	Sound	
7.15	Heat Exchanger / Intercooler	Metal	Sound	
7.16	Turbocharger	Cast Metal	Sound	
7.17	Blowers / Ventilation	Non-Mechanical	Fair	Engine space is vented

7. Main Engines & Propulsion (Cont.)

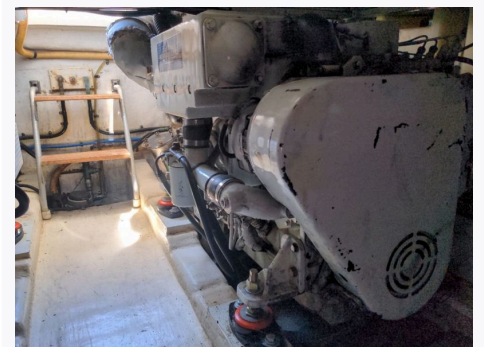
7.18	Engine Oil	Oil	Sound	
7.19	Gear lube / oil	Oil	Sound	
7.20	Raw water pump	Impeller Pump	Sound	
7.21	Thermostat	Cast	Sound	
7.22	Throttle connections	Mechanical Terminals	Sound	
7.23	Gear shift connections	Mechanical Terminals	Sound	
7.24	Throttle levers	Morse Type	Sound	
7.25	Engine bilge	Flow coat	Sound	
7.26	Engine Hours	Helm Gauge Reading	Sound	Port: 1399 Stbd: N/A (Not legible)
7.27	Engine Operation	Engine was not operated		<p>The findings reported are from a visual inspection only, no assessment has been made of the internal condition of the engine(s).;</p> <p>Access to some parts of the engine, driveline and exhaust system were restricted by fixed components and preclude inspection.</p>



Ref # 7.1



Ref # 7.1



Ref # 7.1

7. Main Engines & Propulsion (Cont.)



Ref # 7.5



Ref # 7.11



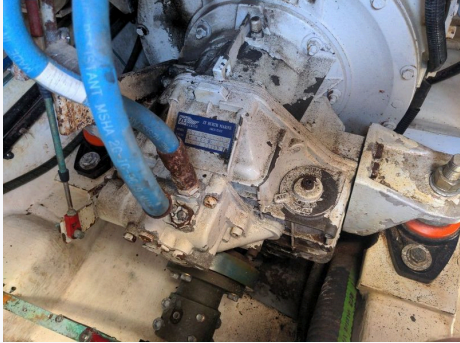
Ref # 7.26

8. Driveline

Ref	Item	Type / Make	Condition	Comments
8.1	Type	Shaft Drive	Sound	Twin shaft drives
8.2	Gear Box	ZF	Sound	
8.3	Propellers	Bronze	Sound	Fixed 3 blade
8.4	Shaft	Stainless Steel	Sound	Appears to run true.
8.5	Shaft Seal	Dripless Seal	Sound	<p>PYI PSS type dripless seals, said to have been replaced in 2023.</p> <p>These seals have a limited services life. Please refer to manufacturers maintenance and service guidelines.</p>
8.6	Coupling	Flexible Type	Sound	
8.7	Skegs	Cast Bronze	Sound	Twin bronze skegs, securely mounted.
8.8	Skeg Mount (Internal)	Bronze Plate.	Sound	No signs of stress or damage
8.9	Bonding	Wire	Sound	<p>Appearing to be connected/ bonded where sighted.</p> <p>Bonding strap, continuity test and appears serviceable.</p>
8.10	Drive Anodes	Zinc or Aluminium	Good	Being replaced with new

8. Driveline (Cont.)

8.11	Drive Coatings	Prop-speed	Good	Driveline has been newly coated in prop-speed which appeared suitably adhered.
------	----------------	------------	------	--



Ref # 8.2



Ref # 8.3



Ref # 8.5

9. Steering & Manoeuvring

Ref	Item	Type / Make	Condition	Comments
9.1	Helm	Single Helm	Sound	Single flybridge helm
9.2	Type	Hynautic Hydraulic	Sound	
9.3	Connections and Lines	Hose	Sound	Hydraulic lines and fittings appeared serviceable.
9.4	Rudder	Bronze	Sound	Solid bronze rudder blade, no damage.
9.5	Rudder Glands	Packing Type	Sound	No notable leak or deterioration sighted, patina present on glands.
9.6	Rudder Head/Shelf	Timber Veneer	Sound	Rudder head secured to FRP composite rudder shelf.
9.7	Trim Tabs Plate	Stainless Steel	Sound	Anodes fitted, no damage.
9.8	Trim Rams	Bennett Type	Sound	Functional. Low oil in reservoir.

9. Steering & Manoeuvring (Cont.)



Ref # 9.1



Ref # 9.2

10. Fuel Systems

Ref	Item	Type / Make	Condition	Comments
10.1	Fuel Lines	Marine Fuel Hose	Sound	
10.2	Fuel Fittings	Compression Fittings	Sound	
10.3	Fuel Filters	Water Separating Type	Sound	
10.4	Fuel Shut-Off	Bronze Valve	Sound	
10.5	Fuel Filler Line	Fuel Hose	Sound	Some corrosion on some hose clamps in steering locker, recommend scheduling for replacement. B: Medium Priority (Service or Maintenance Item)
10.6	Fuel Breather	Fuel Hose	Sound	
10.7	Fuel Tank	FRP Composite	Sound	1 x 950 ltr Capacity

11. Plumbing Systems

Ref	Item	Type / Make	Condition	Comments
11.1	Fresh Water Pump	12-Volt	Sound	
11.2	Water Tank	Polyethylene or similar	Sound	2 tanks with 342 litre capacity
11.3	Plumbing / Hose	HEP Type	Sound	

11. Plumbing Systems (Cont.)

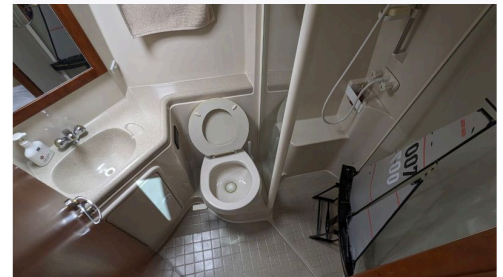
11.4	Sinks	Stainless Steel	Sound	
11.5	Showers	Head Shower	Sound	
11.6	Shower Drainage	12-volt	Sound	
11.7	Toilet / Head	Sealand Electric Flush	Sound	
11.8	Toilet Plumbing	Sanitation Hose	Sound	
11.9	Holding Tank	Polyethylene or similar	Sound	1 tank, approx. 140 litre capacity.



Ref # 11.1



Ref # 11.2



Ref # 11.7

12. Electrical Systems

Ref	Item	Type / Make	Condition	Comments
12.1	Shore Power Lead	15-amp Heavy Duty	Sound	
12.2	Shore Power Breaker	Trip Switch / Breaker	Sound	
12.3	Wiring & Cables	Insulated Wire	Sound	
12.4	Switch Panel	AC/DC switch panel	Sound	Switch panel with Xantrex True Charge monitor.
12.5	Power outlets / GPO	Australian Type	Sound	Tested using DETA-240 plug tester, resulting in a PASS.
12.6	Battery Charger	Xantrex	Sound	
12.7	Batteries	12-volt	Sound	House and Start banks.

12. Electrical Systems (Cont.)



Ref # 12.4



Ref # 12.5



Ref # 12.6

13. Gas System

Ref	Type	Material / Construction	Condition	Comments
13.1	LPG Tanks	LPG Cylinder	Sound	1 x 2kg cylinder in gas locker
13.2	Stove / Oven	SMEV	Sound	Four burner stove and oven in galley.
13.3	Secure	Strap	Sound	
13.4	Vented	Bottom	Sound	
13.5	Regular and lines	LPG fittings	Sound	Fitted.
13.6	Shut-off	Valve	N/A	None sighted
13.7	Compliance Plate	Metal Plate B: Medium Priority (Service or Maintenance Item)	N/A	No certificate of gas compliance sighted. Please note, it is a requirement of Energy Safe Victoria that any fixed gas systems be certified with a Certificate of Gas Compliance.

14. Navigation & Communication

Ref	Appliance	Type	Test	Comments
14.1	VHF Radio	Icom	Powered-up: Yes	Tested
14.2	Chartplotter	Lowrance Elite 9Ti	Powered-up: Yes	Tested

14. Navigation & Communication (Cont.)

14.3	Depth Gauge / Sonar	Lowrance System	Powered-up:	Yes	Tested
14.4	GPS / Speed Log	Lowrance System	Powered-up:	Yes	
14.5	Navigation Lights	12-volt	Powered-up:	Yes	Tested
14.6	Spotlight	12-volt	Powered-up:	Yes	Tested
14.7	Horn	12-volt	Powered-up:	Yes	Tested
14.8	Vessel Gauges	Analogue Gauges	Powered-up:	Yes	Flybridge gauge cluster



Ref # 14.1



Ref # 14.2



Ref # 14.4



Ref # 14.6



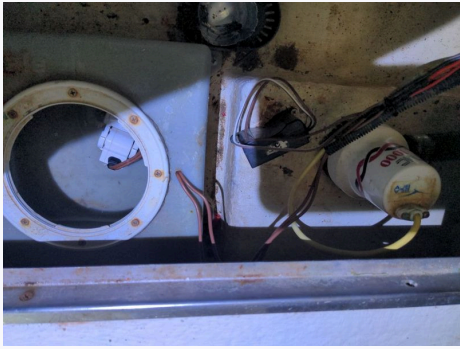
Ref # 14.8

15. Bilge Pumps

Ref	Location	Number / Type	Comments
15.1	Midships Pump/s	2 x 12-Volt	One in engine bay and another under galley, both powered up with automatic float.

15. Bilge Pumps (Cont.)

15.2	Aft Pump/s	1 x 12-Volt	powered up with manual override only. Float switch did not operate bilge pump, consider replacing switch.
15.3	Manual Hand Pump	n/a	None sighted as per factory, bailor bucket aboard.



Ref # 15.1

16. Safety Equipment

Ref	Safety Gear	Type	Comments
16.1	Life Jackets	Foam PFD type	1 x Inflatable & 8 x Foam sighted. Note: Periodic self inspection of all PFD's and cylinders is essential. Inflatable gas cylinders require replacement, check expiry dates stamped on cylinders.
16.2	Extinguishers	Dry Chemical Type	3 x 1kg Dry Chemical.; State laws may require this vessel to carry a 9kg Dry Chemical cylinder. Check regulations to extinguisher size and number for vessel. Note: Dry powder Fire extinguishers should be serviced as per manufacturers guidelines.
16.3	Fire Suppression	n/a	None
16.4	EPIRB	n/a	None
16.5	Flares	Flare Kit	One set in service.
16.6	Fire Blankets	One Blanket	Found in galley

16. Safety Equipment (Cont.)			
16.7	Life rings	Plastic Ring	One in flybridge locker
16.8	Compass	Ritchie	On helm
16.9	Notice:	Safety Gear Inspection	<p>It is the vessels master's responsibility to ensure all safety equipment is appropriate for the vessels intended usage.</p> <p>All safety gear and fire equipment including: fire extinguishers, life jackets, Epirbs, gas and smoke alarms all require regular inspection, service and replacement.</p> <p>All states and regions in Australia have different safety requirements, ensure you are familiar with your local safety requires and ensure the vessel and gear is suitably equipped for the waterway.</p>



Ref # 16.2

17. Valuation		
Ref	Vessel	Summary
17.1	Fair Market Value	<p>From the information we have received, the above vessel in its current condition based on my knowledge and experience consider the below valuation to be fair and reasonable in the current market.</p> <p>Current Vessel Market Value \$225,000.00 (Condition: Sound condition throughout)</p>

18. General Summary

Ref	Vessel	Summary
18.1	Summary	<p>The Riviera 3350 Flybridge presents in sound condition cosmetically and structurally and appears to have been reasonably maintained and suitably serviced.</p> <p>A couple of minor defects have been identified which are mentioned below along with appropriate recommendations which are easily rectified.</p> <p>It is the vessels master's responsibility to ensure all safety equipment is appropriate for the vessels intended usage.</p>

B: Medium Priority (Service or Maintenance Item)

Ref	Responsibility	Comments
10.5 Fuel Systems » Fuel Filler Line	N/A	Some corrosion on some hose clamps in steering locker, recommend scheduling for replacement.
13.7 Gas System » Compliance Plate	N/A	No certificate of gas compliance sighted. Please note, it is a requirement of Energy Safe Victoria that any fixed gas systems be certified with a Certificate of Gas Compliance.;

Terms and Conditions

The material in this report remains the property of Deaspec Marine Surveying and the contracted parties only and is confidential. Deaspec Marine Surveying will not distribute this report without the contracted party's permission and the contracted parties may not reveal or reproduce the contents of this report except for insurance and finance purposes without permission from Deaspec Marine Surveying.

Prepared by

Josh Deacon - Principal Marine Surveyor



Deaspec Marine Surveying
ABN: 92 7565 65791
Email: josh@deaspec.com.au
Ph: 0404 963 494
Web: www.deaspec.com.au