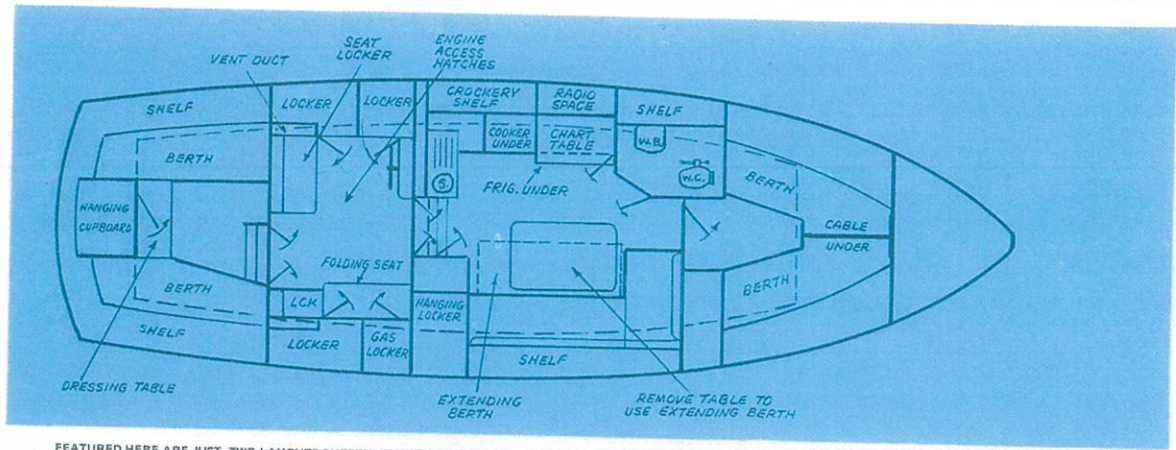
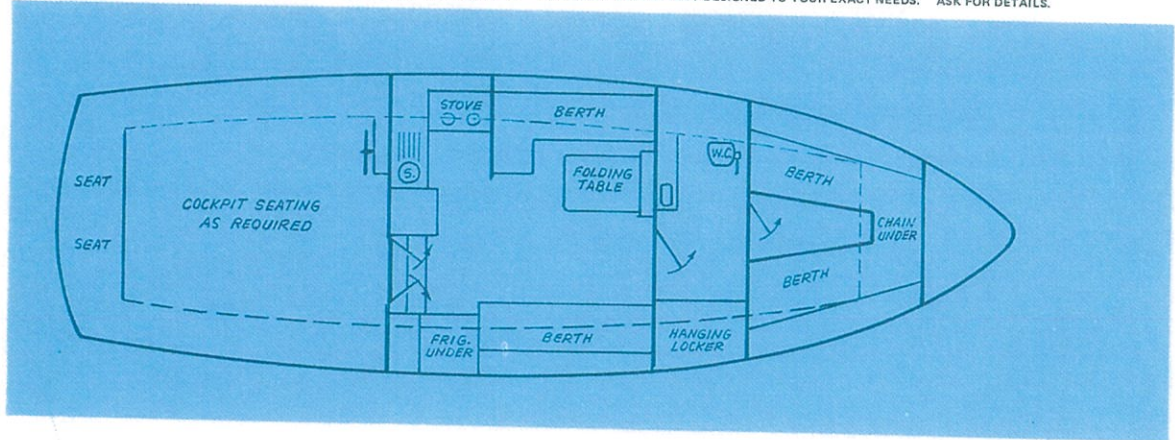


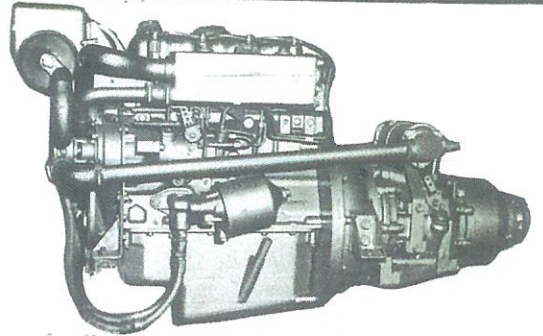
Horizon Motor Sailer

A DIVISION OF BARRY WILSON BOATS PTY. LTD.



FEATURED HERE ARE JUST TWO LAYOUTS CHOSEN BY HORIZON OWNERS. YOU CAN HAVE A LAYOUT DESIGNED TO YOUR EXACT NEEDS. ASK FOR DETAILS.





PERKINS

The heart of the Horizon! Horizon Motor Sailers feature Perkins Marine Diesels, selected for rugged reliability under all conditions. Compact direct injection Perkins engines are installed complete with fresh water cooling, press button starting and fully hydraulic reverse gear box. You can choose from the available range of Perkins Marine Diesels to suit your requirements. Literature is available from Barry Wilson Boats.

* Huon Pine, as described by Charles Whitman in his book "Western Tasmania" . . . Huon Pine . . . is straight-grained, of a pale yellow colour, and full of an essential oil, which causes it to be practically rot proof. It is tough . . . and bends well. It is much in demand for boat-building. It is completely resistant to marine borers!

Huon Pine is one of the world's finest timbers for boat building and is available only in Tasmania. It is used exclusively on Horizon Motor Sailers. Other fine Tasmanian timbers are used for interior finish to provide luxury, elegance and comfort.

PRINCIPAL DIMENSIONS

14 TON

LOA	35' 6"	
LWL	30' 2"	
BEAM	11' 1"	Machinery
DRAUGHT	4' 3"	Perkins 4/236 with heat exchanger Hydraulic gear box with 2:1 reduction
T.M.	14 Tons	Instruments and Single Lever controls.
Displacement	8.1 Tons	
Sail Area	440 Sq.ft.	

10 TON

LOA	32' 0"	
LWL	28' 3"	
BEAM	10' 6"	Machinery
DRAUGHT	4' 3"	Perkins 4/107 with heat exchanger Hydraulic gear box with 2:1 reduction
T.M.	10 Tons.	Instruments and Single Lever controls.
Displacement	7 Tons.	
Sail Area	343 Sq.ft.	

Horizon Motor Sailer are built by dedicated craftsmen in Tasmania — home in Australia for the boat builder who bases his experience on traditional methods of boat building, combined with all that is good in modern technological progress. Here in Hobart, your Horizon Motor Sailer is hand made from Huon Pine, strip planked in the time honoured method.

Barry Wilson Boats build exclusively for the boat owner who wants quality and attention to detail. The future owner decides what he wants — even to the complete design of a custom interior — and he gets it!

Experience in boat building and sailing (Barry Wilson's staff regularly sail in the big events including Sydney—Hobart) ensure you get the best when you choose 'Horizon'.

Set your sights on the 'Horizon' Motor Sailer.

Apart from Horizon Motor Sailer, Barry Wilson Boats build small motor sailers and custom racing yachts. Their success in all fields is your guarantee of satisfaction!

Here are some facts on Horizon Motor Sailer.

- * Guaranteed delivery date, firm price quoted.
- * Choice of superlative Perkins Diesel engines, for proven reliability.
- * Low maintenance factor — because of clean functional design, materials and finish.
- * Seaworthy in the roughest conditions — designed by Port Hamble of England to stand up to all weather conditions.
- * Efficient sail, easy to handle with ample stowage fore and aft.
- * Comfort is paramount, with full headroom throughout, and locker space and luxury items included in quoted price makes this yacht outstanding value.

Construction: (Common to both)

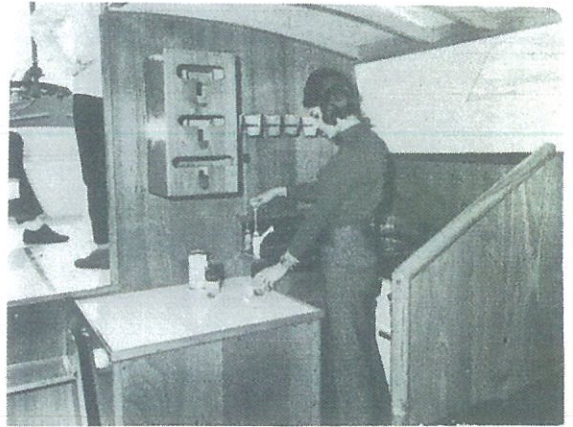
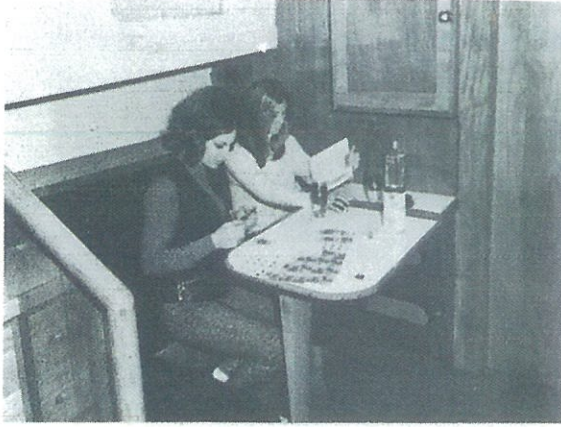
Huon Pine planking and Tasmanian oak timbers, Celery Top Stem, Hog, Keel and Sternpost. Tasmanian Oak Deck Frame and Stringer. Oregon Mast and Boom, Decks of Marine Plywood, Fibre glass covered. Lead keel, fastenings of Stainless Steel, Silicon Bronze and Copper. Accommodation finished in Tasmanian Oak, Huon Pine or Myrtle. Wheelhouse glass: Armoured Plate.



Standard Equipment: (Both Yachts)

Sails, Stainless Steel Rigging, Sheets Mooring Warps and Fenders. Winches and Deck fittings. Stainless Steel Pulpit, Stauchions and Lifelines. Anchor and Ground Gear. Bilge Pump, Electrics and Lights, Clear View Screen. 2 Stainless Steel Sinks, Marine Toilet, Gas Fridge and Stove with oven and grill. Fire Extinguishers. Foam mattresses, with soft nylon covers, Carpets, Compass, Two Way Radio, Stainless Steel Fuel and Fresh Water Tanks, Lifebuoy, Ensign Staff and Socket Boathook, Crockery and Cutlery.

Dinner on launching day



Dimal Launching day

Horizon Motor Sailers are custom built at stock production prices . . . truly the finest value available today in Australia. If you require further information contact . . .

BARRY WILSON BOATS PTY. LTD.
G.P.O. Box 428, Hobart, Tasmania. 7001
Telephone: 485016
Works: Main Road, Cambridge, Tasmania.

lola

Glenchiel
Kemp Design

— Semel pipon

— Dimal



I have a colour photograph of this. I will get you a copy.

