



SYDNEY MARINE BROKERAGE

Royal Prince Alfred Yacht Club Upper Level, Office 8 16 Mitala St Newport NSW 2106

Phone: +61 (02) 9997 7907

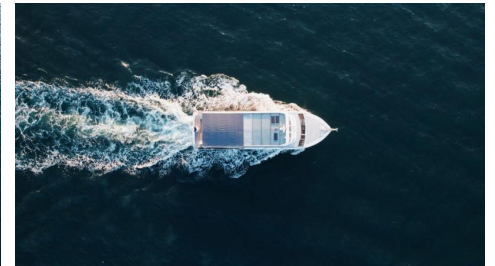
Email: andrew@sydneymarinebrokerage.com

Website: <https://www.sydneymarinebrokerage.com>



Zahara Charter boat - AMSA survey for 127 guests + crew

\$325,000+GST if Applicable



Specifications

Boat Details

Price	\$325,000+GST if Applicable	Boat Brand	Custom
Model	CUSTOM	Length	19.50
Year	1985	Category	Commercial Boats
Hull Style	Single	Hull Type	GRP
Power Type	Power	Stock Number	PBL237
Condition	Used	State	New South Wales
Suburb	GLADESVILLE	Engine Make	Hino

Disclaimer

Our company offers the details of this vessel in good faith but cannot guarantee or warrant the accuracy of this information nor warrant the condition of the vessel. A buyer should instruct his agents and/or surveyors to investigate such details buyer desires validated. This vessel is offered subject to prior sale, price change or withdrawal without notice.



Description

Zahara is an impressive Sydney Harbour charter vessel purpose-built for large events and functions, surveyed to accommodate 127 guests plus crew with expansive entertaining space. Benefiting from a major refit in 2023 and comprehensive maintenance completed in September 2025, she presents as a standout platform for high-capacity harbour cruising and corporate or private events.

Some of her standout features include:

- Full interior refit complete in 2023
- New spare generator onboard (JAN 2026)
- Antifouled and serviced in September 2025
- Great bar area with 2 large commercial fridges
- Air conditioning
- Forward bookings

With her recent refit and upkeep, Zahara offers excellent event potential on Sydney Harbour and is competitively priced to sell !

Don't miss out on this opportunity, reach out to Cooper at Sydney Marine Brokerage to find out more or arrange a viewing today!

Features

Water (Potable) Capacity (l)	2000
Hull Construction Material	GRP
Hull Type	Monohull
Deck Construction Material	GRP
Length (feet)	64
Length (m)	19.50
Beam/Width (feet)	17
Beam/Width (m)	5.12m
Draft (m)	1.9m
Draft (feet)	6
Number of Helms	1
Colour	White
Engine Notes	2 x Hino Inboard shaft drive diesel motors
Number Of Engines	2
Engine Hours	Approximately 3700 per engine
Horse Power (hp)	125 x 2
Drive Type	Shaft drive

Disclaimer

Our company offers the details of this vessel in good faith but cannot guarantee or warrant the accuracy of this information nor warrant the condition of the vessel. A buyer should instruct his agents and/or surveyors to investigate such details buyer desires validated. This vessel is offered subject to prior sale, price change or withdrawal without notice.



Generator	Lister 4 cylinder
Fuel Type	Diesel
Fuel Tank Capacity (L)	1000
Steering System	Hydraulic
Number of Toilets	4
Toilet Type	New Caroma toilets
Air Conditioning	Yes
Galley Notes	U-shape to port
Stove	No
Refrigeration	2 x Large commercial fridges
Number of Sinks	Stainless steel sink
Anchor / Winch	Brand new Maxwell anchor windlass with 90m chain
Bilge Pump	2
Electrics	- 12v LED lighting - Victron energy Blue Solar PWM charger controller
Electronics Navigation	Raymarine Axiom chartplotter
Safety Gear	All as required by AMSA
GPS	Raymarine Axiom
Number of Fish Finders	1
Has Navigation Lights	Yes
Radio	Upgraded VHF radio
Number of Life Jackets	As per AMSA
Maximum speed	5 knots
Cruising speed	4 knots
Vessel Name	Zahara
Ongoings	All bookings go with sale
Maximum Horse Power	250
Passenger capacity	127 + Crew
Anti-foul	September 2025

Engine Details 1

Engine Make	Hino
Engine Hours	3700
Horse Power	125
Fuel Type	diesel
Drive Type	4
Steering	hydraulic

Engine Details 2

Engine Make	Hino
Engine Hours	3700

Disclaimer

Our company offers the details of this vessel in good faith but cannot guarantee or warrant the accuracy of this information nor warrant the condition of the vessel. A buyer should instruct his agents and/or surveyors to investigate such details buyer desires validated. This vessel is offered subject to prior sale, price change or withdrawal without notice.



SYDNEY MARINE BROKERAGE

Royal Prince Alfred Yacht Club Upper Level, Office 8 16 Mitala St Newport NSW 2106

Phone: +61 (02) 9997 7907

Email: andrew@sydneymarinebrokerage.com

Website: <https://www.sydneymarinebrokerage.com>

Horse Power	125
Fuel Type	diesel
Drive Type	4
Steering	hydraulic

Engine Details 3

Fuel Capacity	1000
---------------	------

Disclaimer

Our company offers the details of this vessel in good faith but cannot guarantee or warrant the accuracy of this information nor warrant the condition of the vessel. A buyer should instruct his agents and/or surveyors to investigate such details buyer desires validated. This vessel is offered subject to prior sale, price change or withdrawal without notice.