

48 ft 2019 Lagoon 50, Song Of The Sea

US\$875,000 (A\$1,216,968)

Nadi, Fiji



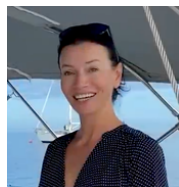
NYM

Cruising Yachts Specialists



Boat Details

Make:	Lagoon	Hull Material:	Fiberglass	Guest Heads:	4
Model:	50	Drive Type:	Sail Drive	Crew Heads:	1
Year:	2019	Beam:	26 ft 7 in	Fuel Type:	Diesel
Length:	48 ft 5 in	Boat Location:	Nadi, Fiji	Max Draft:	4 ft 11 in
Price:	US\$875,000 (A\$1,216,968)	Name:	Song Of The Sea		
Condition:	Used	Guest Cabins:	5		
Class:	Catamaran	Crew Cabins:	1		



Anna Manach | Nautilus Yacht Management

Australia

Tel: **+61(0) 420 882 296**

info@nautilusyachtmanagement.com

www.nautilusyachtmanagement.com

Description

Lagoon 50 Song Of The Sea Highlights

2019 model with 5 cabins, 4 heads and optional crew cabin w. separate head area

Always privately owners. Never chartered.

Current owners purchased when this yacht was only one year old, moving on board in 2020 and sailing from the Caribbean to Fiji over the past 6 years.

Continually upgraded and always maintained in spectacular condition

Full in an out of water survey carried out by renowned international marine surveyor in late 2026 prior to going to market.

Centre frame and compression post reinforced by Lagoon as per manufacturer recall. No problems were found but the reinforcements were carried out as per CE category A (ocean rating) for ocean cruising and extreme ocean environment.

Factory upgrade Yanmar 80Hp instead of the 57HP standard. Always maintained to perfection.

SD 60 saildrives with full seal replacement as part or schedule maintenance October 2025

Upgraded with FlexoFold folding propellers (2022)

3.4M Highfield aluminium RIB (2023) with 20HP Yamaha 4 stroked (2022). Both in excellent condition.

New windlass, 100m anchor chain and 45kg anchor (2024) with remote control from deck and helm station.

Full enclosure for helm / flybridge and cockpit (2024)

4 heads all with fresh water electric toilets and separate shower area.

7 air conditioning units with independent controls for each cabin and salon.

100l / h Dessalator watermaker which runs on both 12V and via alternator or shore power / generator

Set up for world cruising with both 110V and 220V voltage

Electric recess 43" smart TV in salon

Starlink

4kg washing machine

Fusion Bluetooth stereo with Bose inside and outside speakers

Underwater spot lights

Ample refrigeration with double drawers fridge, separate freezer, cockpit fridge and additional Dometic fridge / Freezer

Gourmet galley with 4 burners stove, oven and grill as well as induction plates

Full Cat 1 safety gear plus automatic fire suppression systems for the engine rooms, 8 pax life-raft in commission, multiple EPIRBS and personal EPIRBS, Ocean first aid, etc.

Victron Lithium system (2023-2024) with Victron LiFePO4 330 Ah Smart Batteries totalling 1320 Ah

5000W inverter and additional 3500W and 3000W back up inverters

Victron control and monitoring systems

11Kva Onan generator

3000W solar power on both forward and aft of the boat to preserve charging power under sail.

All B&G electronics and instrumentations (2023-2024)

Scuba Dive compressor amd 8 X scuba tanks

Comes turnkey and with everything you need to just move aboard and begin your voyage today.

Full video walk-through and technical tour available on our YouTube Channel.

Owners continue to maintain this vessel to perfection and will be with you for a detailed handover.

Nautilus Yacht Management is proud to present to you this outstanding Lagoon 50 2019 model.

As Cruising Yachts specialists who have devoted more than 16 years to the Bluewater cruising community and the many families from all around the world who either prepared to set out, or completed their sailing journeys, we carefully inspect and vet all our listings for quality and for suitability as live-aboard, autonomous vessels to explore the world's most remote locations. Many are not suitable for one reason or another, but the ones who make it through our strict benchmarks all have in common that no matter your budget, you can trust that this yacht will keep you safe and comfortable. It is with this philosophy that we introduce to you this 2019 **Lagoon 50**, which we believe may well be the very best example of her kind anywhere in the world available on the market.

Song of the Sea is one of a kind, both because of how she was continually upgraded and fine combed for improvements over her 29,000 nm journey, but also because of the genuine warmth and charm of her family, who for the past 6 years have sailed from the Caribbean all the way to Fiji, mostly keeping to remote and exotic locations, away from noise and marinas and who as such have equipped their travelling home with everything you need to remain self-sustainable for extended periods of time. It is now time for them to return home due to college and family events, but until **Song of the Sea** has found her new home they will continue to care for her, as well as be available to the buyers for a detailed handover to help them settle in without the stress of having to figure out everything by themselves.

Because pictures are worth a thousand words we have put together a **very detailed video tour**, with the help of the whole family. If you are interested in **Song of the Sea** or even just look for some ideas to improve your own yacht it is well worth watching.

Please read on and **click on the Additional Descriptions** for the detailed inventory and list of recent upgrades.

Nautilus Yacht Management has carefully curated all their listings to suit Bluewater cruising for the past 16 years. We have assisted hundreds of cruisers, new or experienced, to discover this magical lifestyle. Please reach out with any questions about purchasing overseas, title transfer, insurance, delivery, skipper help, etc.

But more about the design:

The Lagoon 50 is celebrated for offering Superyacht-level space and comfort in a 50-foot catamaran. What makes it amazing is its innovative use of space, expansive flybridge, huge, well protected cockpit, well appointed cabins, abundant storage for live-aboard—all paired with a high-aspect sailing rig for stable, easy handling.

Key Features that Stand Out:

Unmatched Living Space & Layouts

The Lagoon 50 is known for having some of the smartest interior and exterior layouts in its class.

- **Perfect for a family:** With 5 cabins, including 4 queen size cabins with ensuite heads and separate showers and a double cabin mid-ship (which most cruisers use for storage or the extra guest), the Lagoon 50 gives everyone their own private space, with plenty of dedicated storage for live-aboard families sailing around the world.
- **The "Patio" Cockpit:** The aft cockpit features a modular dining table that can comfortably seat up to 10–12 guests, deep and comfortable transom seats, lounge for relaxing in the shade and storage for all your equipment or water toys. A clever sliding bench provides additional storage allows the space to adapt seamlessly whether you are dining or relaxing.

The Flybridge & Helm:

Instead of a crowded lower helm, the Lagoon 50 features a signature flybridge that offers a fantastic 360-degree view.

- All sail control lines lead directly to the centerline helm, making single-handed or short-handed sailing incredibly straightforward.
- Behind the helm station, there is a comfortable articulating sunbed that allows you to face forward or aft while shielded from the sun.
- As with the downstairs cockpit, the flybridge is protected by all-around screens for weather and sun shade.

Entertainment and the Aft Platform:

This catamaran was designed with entertaining in mind.

- It features an outdoor galley module with a fridge and countertop, along with barbecue over the side to keep smoke and heat out of the cockpit.
- The electric davits system at the stern effortlessly lifts and launches the dinghy.

- The salon and cockpit are all on one level with direct access through the wide sliding doors. The dining room is elevated to provide a more private space with an electric retractable smart TV which disappears in its cabinet when not in use.

Smart Sailing Performance:

Designed by VPLP Design, the Lagoon 50 incorporates the latest in cruising technology.

- The mast step is positioned further aft, which creates numerous sailing advantages and a larger foretriangle for downwind sails.
- It comes standard with an 87-percent self-tacking jib, which along with the primary and secondary electric winches makes coming about and sail handling an absolute breeze.
- Song of the Sea's owners have improved the sail wardrobe to sail around the world with beautiful downwind sails including a Oxley Levante Parasail and Gennaker, both in very good condition.

Information & Features

2019 Yanmar 4JH80 (Engine 1)

Engine Type:	Inboard	Drive Type:	Sail Drive	Propeller Material:	Bronze
Fuel Type:	Diesel	Power:	80 hp		
Engine Hours:	2430	Propeller Type:	3 Blade		

2019 Yanmar 4JH80 (Engine 2)

Engine Type:	Inboard	Drive Type:	Sail Drive	Propeller Material:	Bronze
Fuel Type:	Diesel	Power:	80 hp		
Engine Hours:	2430	Propeller Type:	3 Blade		

Dimensions

LOA:	48 ft 5 in
Beam:	26 ft 7 in
Max Draft:	4 ft 11 in

Weights

Displacement:	28,346 kg
---------------	------------------

Seating

Liferaft Capacity:	8
--------------------	----------

Tanks

Fuel:	1,040 l
Fresh Water:	830 l
Holding:	240 l

Accommodations

Guest Cabins:	5	Crew Heads:	1
Crew Cabins:	1		
Guest Heads:	4		

Other

Hull Shape: **Catamaran** Builder: **Lagoon Catamarans. France.**
Flag Of Registry: **United States**
Designer: **VPLP (Van Peteghem Lauriot Prevost)**

A Word From The Owners

Our catamaran, Song of the Sea, has changed our family in more ways than we can describe. From exploring remote islands to connecting with local peoples to watching dolphins jump at our bow, millions of memories formed through living on our yacht for the last six years. When we purchased her in 2020, this grand Lagoon 50 was just one year old. At the time, the Covid pandemic was causing confusion and barriers with traveling, but we still had an incredible experience touring the Caribbean. It was a dream come true! My father, Captain Grant, had dreamed of sailing since he was five years old. Not only was it happening now, but he could also bring my mom, my sister, and me on the adventure. Aliona and I were 14 and 12 years old back then, and Song of the Sea allowed us to spend so much quality time together as a family. We were home-schooled, which worked in our favor as we accelerated our education, and we still managed to socialize with other sailing kids and island locals.

It was going great, but then a sad moment arrived. We had originally planned to sail for two years, and those two years were finished. Did we need to move back to land? The four of us sat down to discuss, and we agreed that we loved the sailing life too much to stop. So, the journey continued!

We proceeded next through the Panama Canal and then to the South Pacific. French Polynesia showed a whole new world to us. For example, we visited Maupihā'a — an island with only three people living there! As we caught coconut crabs with them or watched the dazzling sunsets, we often thought gratefully, "Wow, you can never get these experiences as a regular tourist. While most tourists have to rush to see all the sights and then catch an airplane home at the end of the week, we can take our time and spend weeks on an island." Over six years, we sailed more than 22,000 nautical miles — surpassing a full circumnavigation — and visited 26 countries and over 120 islands. It was a life unlike any other.

Life aboard also taught us far more than seamanship. The challenges of the sea became our greatest classroom. Over the years, we developed skills in electrical systems, plumbing, mechanical repairs, and countless other disciplines that bluewater cruising demands. Not only did we become master sailors, but we also learned to think fast, problem-solve under pressure, and tackle whatever the ocean threw our way. That self-reliance gave us enormous confidence — and it meant that Song of the Sea was always kept in top shape. We maintained her meticulously throughout our ownership, and we invested heavily in upgrades to ensure she was both safe and capable for offshore passages.

Among the many enhancements we made, we converted the electrical system to lithium batteries, added eight solar panels, mounted a Performance Starlink for fast-speed internet, and installed an induction stove for cooking by electricity or gas. We upgraded the dinghy and added a scuba compressor — allowing us the incredible luxury of diving straight off our own boat whenever and wherever we wished. We installed automatic fire extinguishers, structurally reinforced the aft of the vessel, and purchased a Jordan Series Drogue for heavy-weather safety. We also added an Oxley Levante sail, which allows Song of the Sea to sail straight downwind with ease — a remarkable capability for a catamaran of her size. For provisioning and comfort, we have two refrigerators, a freezer, and a Dometic appliance that can serve as either, depending on the settings. Storage compartments throughout the boat — under the beds, cushions, and floors — ensure there is space for everything a long passage requires.

Even among sailing vessels, Song of the Sea stands out. Her spacious layout with five cabins and four bathrooms provides true comfort, allowing room not only for the four of us but also for guests. That was an important detail when we purchased her, as we love having family members join us for extended stays in tropical locations. But most importantly, I think Song of the Sea simply looks gorgeous. With a mast towering 90 feet over the water and a deck shining white in the sun, she is a stunner!

We will be very sad to leave our home-on-the-water behind, but our lives are calling us to do so. After six years, our family back in the United States misses us and deserves our attention. My grandparents are getting older and need more help. Aliona and I also have two older sisters living on land with their husbands — one is expecting, and with the excitement of a new child coming, we want to be there. My parents are going to become grandparents, after all! In addition, Aliona had successfully completed two years of university online, but now she wants to attend classes in person. After much consideration, we have realized that the best way for us to transition and focus on our family is to sell the boat and move permanently to land. It is bittersweet, but I know this: Song of the Sea has more adventures waiting for her, and there will be a perfect family to continue her voyages on the open ocean. I am hopeful that the new owners will love her as deeply as we do, and that their lives will be changed as greatly as ours. New horizons await!

— Written by Anastasia Gyulnazaryan on behalf of Grant, Irina, Aliona, and herself

General Information

- Boat Name: Song of the Sea
- HIN : CNBZU019F819
- Registration No: 1307122
- Place of Registration : Newport, RI, USA
- Boat Length: 49 feet or 14.75 m
- Beam: 26.7 feet or 8.1 m
- Draft: 4 feet 11 inches or 1.5 m
- Full Displacement : 28346 kg (62503 lbs)
- Material: GRP
- Keel : Twin Fixed Fin Keels
- Designer: Van Peteghem/Lauriot-Prevost
- Builder: Lagoon
- Year Built: 2019
- Launched Year: 2019

Tankage

- Water: 2x240 L and 2x 175 L. Made of Plastic
- Fuel Capacity: 2x520 L. Made of Stainless Steel
- Grey Tanks: None
- Black Tanks: 2x120 L. Made of Plastic

Ground Tackle

- Ground Tackle: 330 feet – 100 m of 12 mm galvanised chain. New 2024
- Anchor: Spade Anchor, 45 KG. New 2024
- Second Anchor: Collapsible
- Windlass: Lewmar V5 New 2024
- Helm Windlass Controller with chain counter. New 2025
- Windlass Remote Control (deck locker)

Engines / Machinery

- Engine Details: 2 Yanmar 4JH80. 2430 Hours each. Services are done per Yanmar Maintenance Schedule.
- Added a Low Pressure Fuel Pumps (New 2024).
- SailDrives: SD60. Seals replaced Oct 2025
- Fuel Capacity : 1040 Liters total
- Consumption: 3 Liters per hour.
- Cruising Speed: 6 Knots
- Max Speed: 9 Knots
- Genset: Cummins Onan 11 Kva 230 v
- Thrusters: none
- Propellers : FlexoFold Foldable Propellers. – New 2022

Dinghy

- 2023 Highfield Hypalon CL340 Dinghy with custom made protection chaps
- 2022 Yamaha 4 Stroke 20 HP Engine with Electric Start and a battery (2025). Great condition. All services are up to date.
- Foldable Anchor with a chain
- Oars and foldable Ladder

Covers

- Cockpit Enclosures for the entire area (2024)
- Helm Station Enclosures for the entire area (2023)
- Helm Station Front Enclosure with a zip-able section to open / close easily (2025)
- Cabins curtains and blinds / insect screens
- Mainsail cover / bag with lazy jacks
- Custom dinghy chaps

Accommodations

- Layout: 3 double cabins on Port and 2 Cabins on Starboard. Plus optional crew cabin in bow with separate head area.
- 4 Queen Size Beds and 1 double bed
- 4 Fresh Water Heds with separate Showers.
- USB charging points in each cabin
- Each cabin has a fan and reading lights x 2.
- Abundant storage under the bed (drawers), hanging wardrobe and large lockers.
- AC controls in each cabin as well as 2 AC units in the Saloon
- Overhead hatch and a side windows for cross ventilation.

Heads

- 4 Heads with a Fresh Water Electric Quiet Flush toilet.
- Holding tank for each head.
- Each bathroom has a sink and a closet shelf with a mirror
- Each bathroom has an enclosed stand up shower w. hot and cold water
- Abundant storage, light and ventilation

Comfort

- 7 Dometic AC units. 2 in the Saloon and 1 in each Cabin
- Watermaker: Dessalator Duo 100 L. Runs on both 12 volts and 230 volts. New High Pressure Pump 2025, Added a Carbon Filter on the Fresh Water Return as well as a testing tube with a Y to test the water prior to putting it into the tanks (New 2024)
- Samsung TV in the Saloon 43 Inches. New 2024
- Washing Machine, Candy 4 KG. New 2021
- Fusion Surround Sound System in the Helm, Cockpit and Saloon with Bose Speakers.
- L&W 100-E Scuba Air Compressor (New 2020)
- 4 underwater spotlights
- Rigit Dry/Wet Vacuum
- GreenWorks 1500 PSI Pressure Washer
- Scuba dive compressor and 8 X scuba tanks

Galley

- Refrigeration. Isotherm Fridge 2 drawers
- Freezer: Frigonautica Freezer
- Cockpit Refrigerator
- Dometic CFX 395 freezer / fridge Combo New 2022

- Stove: 4 x Gas DeDeitrich / ELEM Gas
- Microwave: Whirlpool 220v
- Water Maker: Dessalator Duo Watermaker 100L
- Water Heater: Boiler Enox 60 L
- We will leave extra equipment for the kitchen such as:
- Keureg Coffee Maker (2020)
- Philips Capuccino Machine (2024)
- Double Induction Stove (2025)
- Instapot / Airfrier Combo (2025)
- Cutlery and kitchenware

Safety

- 8 Person SeaSafe Liferaft PLF-8 Ocean Safety ISO 9650 (In commission. Inspection 2024)
- 2 Automatic Fire Suppression Systems in Engine Compartments (2022)
- Jordan Series Drogue with Reinforcement on the aft of the boat (2023)
- ACR GlobalFix iPro EPIRB
- ACR PLB-400 2x Personal ePIRB Beacons
- ACR PLB-375 2x Personal ePIRB Beacons
- ACR AIS Link GPS MOB x 4 (2022)
- Plastimo Pilot 165 inflatable Life Jackets x 4
- Lifesling
- 6 Fire Extinguishers
- Fireblanket
- 2 – 2000 GPH Bilge Pumps (2023)
- 1 – 3500 GPH Portable Bilge Pump (2023)
- Large Portable Bilge Pump with 230 V (2021)
- Extensive med kit
- Philips Heart Start Defibrillator
- Oxygen Cylinder

Electrics

The owners upgraded the electrical system in 2023 to Lithium Batteries and dramatically increased the size of the battery bank and overall power on the boat. In addition to the 220V original system, the owners have installed a 110 Volt Infrastructure with a 110 Volt Inverter, so they have not only redundancy, but also can use multiple different kitchen appliances at the same time.

Equipped with dual 110V and 220V systems, this yacht is suitable for cruising anywhere in the world.

- Victron LiFePO4 330 Ah Smart Batteries x4 (New 2023). Total 1320 Ah
- Victron Quattro 5000 W inverter / charger (New 2024)
- Spare Victron MultiPlus 3000 (New 2024)
- Spare MasterVolt 3500 (New 2023)
- Giandel Puresine 3000W/110 V
- Solar Panels (Total 3000 W)
- 2x300 Watt Hard Solar Panels on Bimini (2019)
- 4x330 Watt Q-Cell Q-Peak Duo Solar Panels on the Frame Installation (2021)
- 4x270 Solbian Flexible Walkable Panels (2023)
- 2 Victron MPPT 250-100 TR VE.Can (2021)
- 1 Victron MPPT 150-100 TR VE.Can (2023)
- 4 Victron MPPT 100-30 Smart Solar (2023)
- 2 Victron Cyrix (2023)
- 1 Victron Cerbo (2025)
- 1 Victron Digital Multi-Control 200 A (2026)
- 4 Victron Smart Shunts (2023)
- 2 Victron Smart Battery Protect (2025)
- 6 Victron Direct to USB-C Interface (2024)
- 1 Victron MK3 (2023)
- 1 Victron VE.Bus BMS (2023)
- 2 Victron Orion DC to DC 30 A (2023)
- 2 Balmar Alternator Regulators to control Lithium Charging from Engine Alternators (2024)
- 1 Balmar CenterFielder (2024)
- 1 Balmar Gateway (2024)
- 2 Balmar MaxCharge MC-618 (2024)
- 1 Balmar SG200 Battery Monitor (2024)
- 2 Balmar Shunts (2024)
- 1 Cristec YPower Charger
- 11Kva Onan generator

Electronics / Communication

- B&G Zeus 3s 16 inch NavStation (2023)
- B&G NAC-3 AutoPilot (2024)
- B&G NAIS 500 (2023)
- B&G Halo 20+ Radar (2020)
- B&G Triton x3
- B&G V100 VHF Wired Headset (2025)
- B&G H60 VHF Handheld Wireless Headset (2025)
- B&G 608 Wind Instrument (2026)
- B&G Precision 9 Compass (2026)
- B&G BT-1 BluTooth Receiver
- B&G WR10 – Remote Controller
- B&G DTS-810 Boat Speed Indicator (2025)
- Spares:
 - B&G NAC-3 AutoPilot
 - B&G Rudder Response
 - B&G DTS-810 Boat Speed Indicator
- Navionics Charts for Central America & Caribbean - Inland and Coastal Marine Charts
- Navionics Pacific Islands - Marine Charts
- Navionics Platinum+™, Australia, East & Central to New Zealand - Inland and Coastal Marine Charts
- 1 Starlink Performance Gen 3 Antenna and Router (2026)
- 1 Archer TP-Link Wifi Router (2025)
- 1 NetGear Router (2021)
- 1 PepWave Max (2021)
- 1 PepWave Antenna (2021)
- 1 PepWave Wifi (2021)
- 1 PredictWind DataHub (2025)
- 1 Garmin InReach (2024)
- 1 Iridium Go with External Antenna (2024)
- 2 Handheld VHF Radios to take to shore and ditch bag (2020)

Sails

- Fully Battened Square Top Main Sail (2019) . Fully Re-stitched in 2025.
- Self-Tacking Jib (2019) . Fully Re-stitched in 2025 and UV Cover Replaced.
- Main Sail Bag – New 2024
- Gennaker (2019)
- Oxley Levante Parasail– New 2022

Rigging

- Mast, Standing Rigging and Running Rigging all in excellent condition. Last Inspected in 2025
- Forestay Replaced 2025
- 3 Harken electric 12V primary and secondary winches for halyards and sheets
- 1 Harken electric 12V flat winch for traveller
- All lines are constantly updated to maintain great working order.
- Several Spare Lines

Deck Gear

- Automatic Davits system for dinghy
- Quick Motor for Davits (New 2025)
- Deck Shower on the Starboard Sugar Scoop
- Salt and Fresh Water Deck Wash with New Remote Control (2025)
- Sunrise Yachts Trampoline (New 2022)

Miscellaneous

Ton of tools, fishing gear, spare parts. Too many to list

Recent Upgrades

Besides the extensive 2023 - 2026 upgrades:

- Bottom strip and new anti-fouling in 2025
- Owners constantly update / replace / maintain parts so the boat is religiously maintained in excellent working order
- Lagoon recall performed on compression post in 2020 and reinforced by Lagoon specialists.
- Lagoon also reinforced the centre of the boat frame in 2025
- Inspected in May 2026 and found 100% sound
- Full in and out of water survey carried out May 2026 by internationally recognised marine surveyor and multihull specialist.