



**SEAWORTHY
INSPECTIONS**






Boat Condition Overview



Boat Condition Overview

6117

Complete

Location	Wollongong
Date of PACR	03.07.2026 09:18 AEST
SWI Reference Number	6117
Lot No:	PD121273
Vessel Type	Power Vessel
Vessel Year	1995
Vessel Make and Model	Wellcraft 210SC Eclipse
Vessel Hull Identification Number (HIN)	WELEEC94A595
	
Photo 1	
Vessel Registration Number	LZ799N
	
Photo 2	
Engine Make and Model	MerCruiser 5.7 Thunderbolt
	
Photo 3	
Port/Main Engine Serial Number	OF289915

HULL OBSERVATIONS

Construction Material

Fibreglass (GRP)

Main Floor/Deck

Inspected

Satisfactory

No flex, rot or other structural faults identified.

Minor colour fade to carpet, otherwise fault free.



Photo 6



Photo 7



Photo 8



Photo 9



Photo 10



Photo 11

Side and Bow Decks

Inspected

Satisfactory

No faults identified.

Good level of shine to gelcoat.



Photo 12



Photo 13



Photo 14



Photo 15

Seating and Trimming

Inspected

Satisfactory

Given the age of the vessel the upholstery is in excellent condition.



Photo 16



Photo 17



Photo 18



Photo 19



Photo 20



Photo 21

Fuel Tanks, Fillers, Filters and Hoses

Inspected

Satisfactory

Lines and filters fault free and appear recently replaced.
Minimal access to tank available.

Windscreen and Wipers

Inspected

Satisfactory

No faults identified.



Photo 22



Photo 23

Bimini and Clears

Inspected

Satisfactory

Fore and Aft Bimini and Clears Included with vessel.



Photo 24



Photo 25

Sea Cocks, Skin Fittings and Hull Penetrations

Inspected

Fair

Please note, raw water pickup, recommend fitting seacock to below waterline skin fitting.



Photo 26



Photo 27



Photo 28

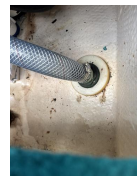


Photo 29

Doors, Windows, Lockers and Hatches

Inspected

Satisfactory

No faults identified.



Photo 30

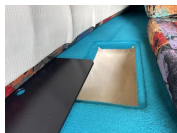


Photo 31

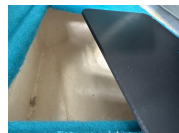


Photo 32



Photo 33



Photo 34



Photo 35



Photo 36



Photo 37



Photo 38



Photo 39

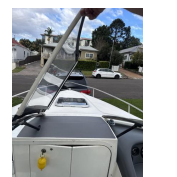


Photo 40



Photo 41

Hull Condition Above Waterline

Inspected

Satisfactory

No structural faults or signs of heavy impact identified.

Gelcoat has good level of shine.

Minor blemishes present.



Photo 42



Photo 43



Photo 44



Photo 45



Photo 46



Photo 47



Photo 48



Photo 49



Photo 50



Photo 51

Hull Condition Below Waterline

Inspected

Satisfactory

No faults identified



Photo 52



Photo 53



Photo 54



Photo 55



Photo 56



Photo 57



Photo 58



Photo 59



Photo 60

Swim Platform & Ladder

Inspected

Satisfactory

No faults identified



Photo 61

Transom Condition

Inspected

Satisfactory

No faults identified.

Percussion test no anomalies detected.



Photo 62



Photo 63



Photo 64

Images and Video

Outside walkaround video.

[8D56C56E-BF7C-4BE8-9F52-83AD19D624A2-video.mov](#)

ENGINE OBSERVATIONS

Port/Main Engine Hours

238Hrs



Photo 65

Compression Testing Conducted

N/A

Engine Controls

Tested

Satisfactory



Photo 66

Engine Indication

Tested

Satisfactory

Voltage gauge not functional, alternator function tested and operational.

All others operating fault free.



Photo 67



Photo 68



Photo 69



Photo 70



Photo 71

Engine Oil Visual Inspection

Inspected

Satisfactory



Photo 72

Engine Cooling System / Tell Tails

Inspected

Satisfactory

Tested

Vessel is fresh water cooled.

Vessel has marine toeq SS Manifolds.

All hoses appear recently replaced and system appears recently serviced.



Photo 73



Photo 74



Photo 75



Photo 76



Photo 77



Photo 78



Photo 79

Engine Bay Ventilation (Inboards)



Photo 80

Gearcase Condition



No faults identified.

Bellows appear in good condition.

Minor abbrasions to skegg.



Photo 81



Photo 82



Photo 83

Gearbox Operation



[C811D606-E1B7-41DC-B9AC-BB5B69EBE694-video.mov](https://www.youtube.com/watch?v=C811D606-E1B7-41DC-B9AC-BB5B69EBE694)

Trim and Tilt Operation and Indication





Photo 84



Photo 85



Photo 86

Steering Type

Hydraulic

Steering and Rudder System

Inspected

Satisfactory

System appears recently replaced and in excellent functional condition.



Photo 87



Photo 88

Propeller

Inspected

Fair

Minor chips and deformations to 3/5 prop blades.



Photo 89



Photo 90

Engine Mounts

Inspected

Satisfactory



Photo 91



Photo 92

Functional Test Observations

Engine Running Information

Engine Running Information.

Engine was run for approx 45min.

Cooling system fully operational with no faults.

Gearbox shifted smoothly.

All gauges functional.

Engine started well both hot and cold.

No misfires, untoward vibrations or audible faults identified.

Overall satisfactory results.

[3B1F7043-ACFB-42A0-B3D2-477A706ABE96-video.mov](#)

Leaks and Salt Residue



None Identified, very clean engine bay.

Engine Images and Video



Photo 93

ELECTRICAL SYSTEMS OBSERVATIONS

Batteries Fitted

1 x 750CCA, 1 x 760CCA



Photo 94



Photo 95

Batteries Tested

Yes

Port 91% Health
Starboard 46% Health



Photo 96



Photo 97

Batteries Adequately Secured

Yes

Battery Isolaters and Breakers

Tested

Satisfactory



Photo 98

Boat System Instruments

Tested

Satisfactory

Depth gauge powers on.

Compass Functional.



Photo 99



Photo 100

Navigation Lights

Tested

Satisfactory



Photo 101

Electrical Wiring Looms and Distribution

Inspected

Satisfactory

Loom appears factory specification with quality terminations, fusing and wire.

All switches functional and labeled.



Photo 102

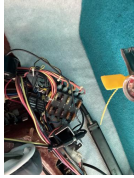


Photo 103



Photo 104



Photo 105

Bilge Pumps and Float Switches

Tested

Satisfactory



Photo 106



Photo 107

Navigational Equipment

Not Applicable

Additional Comfort Items Present

Cabin and Deck Lighting



Tested and functional.



Photo 108

Entertainment Systems



12v TV
Stereo System tested and functional.



Photo 109



Photo 110

ONBOARD EQUIPMENT

Anchor / Chain / Rope

Inspected

Satisfactory



Photo 111

VHF Radio

Inspected

Fair

27MHZ not VHF

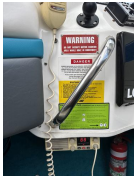


Photo 112

Horn

Not Sighted Onboard

INSPECTION COMMENTS

ADDITIONAL COMMENTS

The inspected 1995 Wellcraft 210 Eclipse presents in excellent condition for its age, with minimal deficiencies identified throughout the inspection.

The hull was found to be structurally sound with no significant faults identified. The gelcoat presents very well with only minor age-related blemishes and scratches observed. The interior and upholstery are also in excellent condition for a vessel of this age, with no significant damage identified.

Mechanically, the vessel shows evidence of significant care, maintenance and investment over its lifetime. The engine presents with indications of recent servicing and upgrades, including a cooling system that appears to have been recently replaced or maintained. Minimal corrosion was observed, with the engine starting, running and operating correctly during testing. The sterndrive assembly also presented in good functional condition with no significant faults identified.

All onboard electrical systems tested during the inspection were operational. The trailer presented in functional condition, although a full detailed trailer inspection was not conducted.

Overall, this Wellcraft 210 Eclipse is a well above average example for its age. During the out-of-water inspection and testing completed, the vessel presented exceptionally well with no significant faults identified.
