

NEW 2022 FACHERIS STYLING AVAILABLE



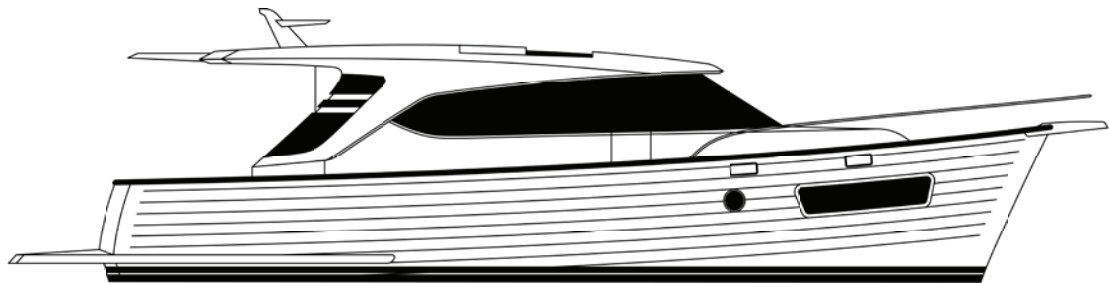
HUDSON BAY 450



clippermotoryachts.com

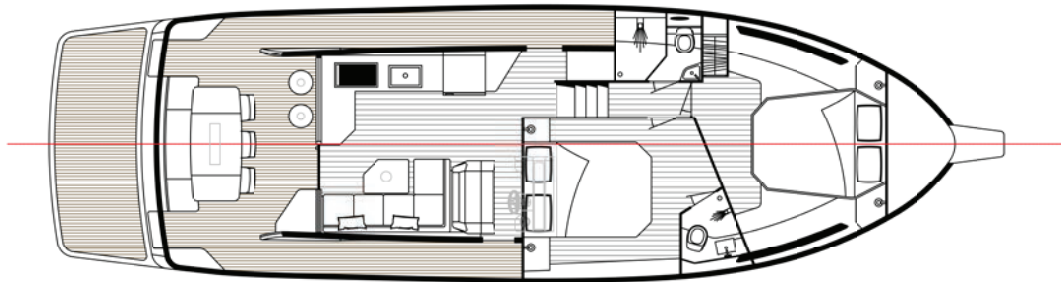
HUDSON BAY 450

PROFILE

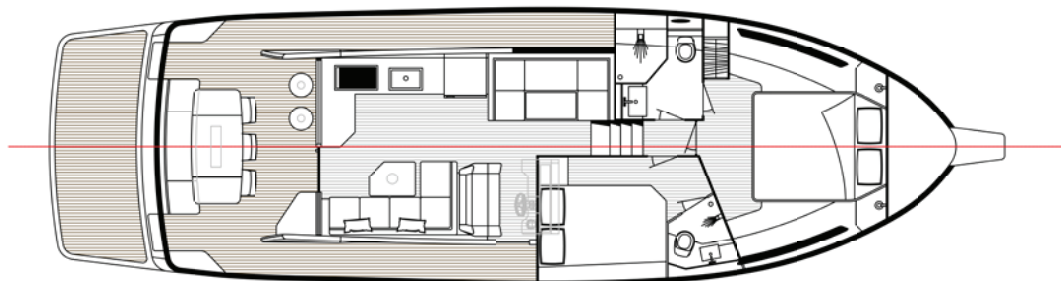


HUDSON BAY 450

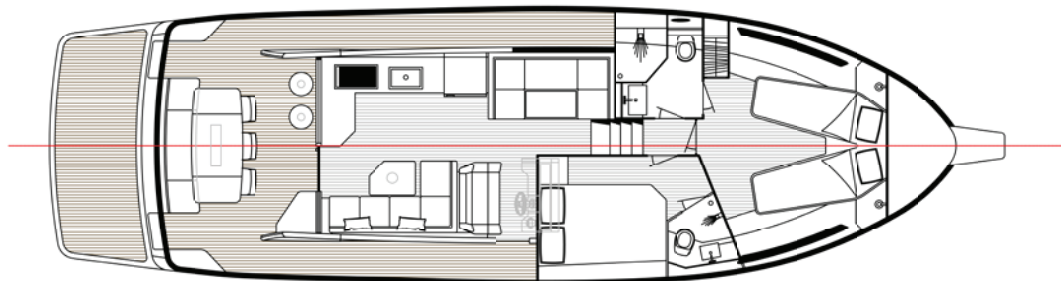
FLOOR PLANS



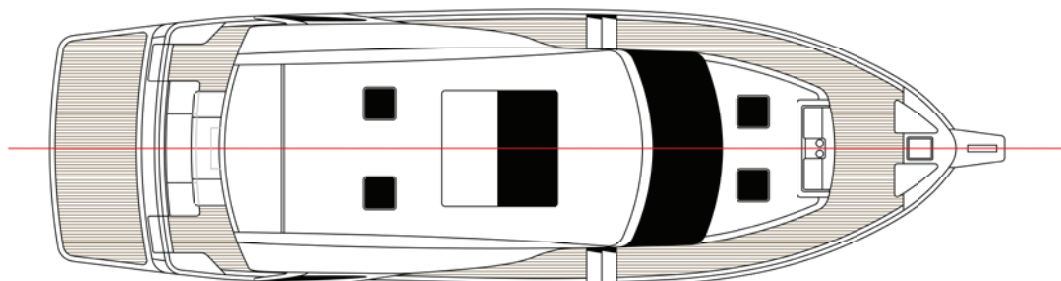
GENERALE ARRANGEMENT REV D



GENERALE ARRANGEMENT REV C



GENERALE ARRANGEMENT REV B



DECK PLAN



HUDSON BAY 450



HUDSON BAY 450

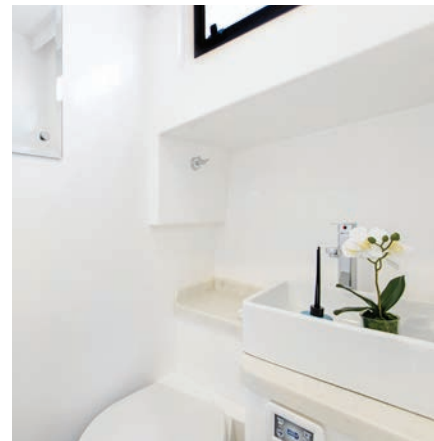


SPECIFICATIONS

Length overall (inc. swim platform & bow roller)	13.8m	44ft 10in
Beam OA	4.23m	13ft 8in
Fuel Capacity	2,000 litres	
Water Capacity	700 litres	
Standard Engines	Volvo D6 440 HP	
Generator	Onan 6Kva	
Bow Thruster	150kgf	



HUDSON BAY 450



OVERVIEW

Clipper's latest Hudson bay is designed to be a comfortable combination of a large motor yachts with two full cabins and bathroom yet still presents excellent value.

Available in a single or twin engine combination the new 450 has a very large entertaining cockpit and outdoor breakfast bar outside the aft galley. Boasting one level entertaining from the cockpit dining table through to the lower helm she boasts a clever twin dinette arrangement on the upper deck or if you prefer an island bed in the starboard stateroom we have an alternate saloon layout option. Both bathrooms are equipped with showers for weekends away with kids or guests.

Standard power is a Volvo D6 440 diesel shaft drive engine with 6 kva Onan generator and air conditioning standard in the specifications.

The new Hudson bay 450 is packed with features of a larger motor yacht and spacious enough to entertain in style.



HUDSON BAY 450

STANDARD SPECIFICATIONS

CONSTRUCTION

- Hand laid molded fibreglass hull, decks and superstructure
- Gelcoat exterior – white
- Hull – Solid FRP keel, chines and bottom
- Watertight collision bulkhead forward

GENERAL SPECIFICATIONS

- All stainless steel exterior fastenings – 316 marine grade
- International Paints Inter Protect primer system for underwater
- Antifouling – black x 2 coats
- Teak, aniegre or walnut interior – gloss or satin
- Cabin headlining panels finished in quality cream vinyl
- Deck hatch on main deck for master cabin (insect screened)

MECHANICAL

- Main Engine – Volvo D6 440 HP
- Single lever electronic engine and gear controls
- Generator – Onan 6kw with remote start/stop panel
- Bow thruster – 150kgf
- Electric/hydraulic Trim Tabs with guage
- Superior engine room sound proofing material – foam and lead with aluminum cladding
- Engine exhausts to exit transom
- Internal sea water strainers for engines, generator and air conditioning
- Engine room air vents and blower fan – 12v DC
- Engine room blower fan outlet
- All through hull fittings on or below the water line fitted with stainless steel or bronze ball valves.
- Bilge pumps – automatic with manual override x 3 high water alarms and manual bilge pump x 1
- Fibreglass water/gas separator for generator
- FRP fuel tanks with baffles and cleaning manholes
- FRP water tanks with baffles (FDA approved gelcoat)
- Sight gauges on fuel tanks
- Sight gauge on water tanks with single engine option
- Fuel tank gauge at helm
- Air vents fitted to fuel and water tanks
- Hot water tank (68lts) – AC 240v and heat exchange from main engine
- Fresh water system – pressure pump activated
- Holding tank – with macerator pump for overboard discharge

- Hydraulic steering
- Propellers – four blade (S Class)
- Rudders – stainless steel stocks and stainless steel blades
- fitted with anodes
- High quality stainless steel propeller shafts
- Dripless stern gland propeller shaft seal
- Heavy duty stainless steel/bronze underwater brackets with cutlass bearings
- Electric toilet – with macerator pump for discharge overboard or to holding tank via “Y” valve

Tank capacities are total volume, usable capacity will vary due to boat trim and sea state. Do not rely on more than 90% of tank volume being usable.

HELM

- Complete engine instrumentation with alarms
- Engine hour meters
- Electric horn with single trumpet
- Three electric windshield wipers and washers (12v DC)
- Electronic engine/gear controls
- Electric Trim Tab controls with guage
- Auto Anchor up/down winch control and chain counter
- Compass – 4.75” with light
- Hydraulic steering
- Fuel and water gauges
- Isotta Italian steering wheel
- Electric bilge pump switches and high water alarms
- Helm seat with footrests

COCKPIT

- Self draining cockpit to both port and starboard sides
- Kenyon electric BBQ and sink in transom
- Hand held hot/cold fresh water shower
- Hatch – access to lazarette with gas struts and stainless steel latch
- Shore power inlet (AC)
- Lighting – 12v DC overhead
- Transom boarding door
- Wash down tap – seawater
- Transom seat and table



HUDSON BAY 450

AUDIO/VISUAL

- 32" Flat screen LED TV on electric lift

Television size and brand may vary due to model availability and technology changes at the time of installation.

ELECTRICAL

- LED lighting throughout
- Batteries – 2 x 200amp 12v for house, 1 x 200amp 12v for engine start, 1 x 95amp 12v for generator start, 1 x 200amp 12v for bow thruster
- Battery charger – automatic 50 AMP/12VDC
- Battery disconnect switches
- Battery paralleling system for emergency engine starting
- Anchor winch – 12v DC with circuit breaker at lower helm
- Full copper bonding system attached to all metallic hull fittings under the water line with zinc anodes
- Engine monitoring including instrumentation, alarms and hour meters
- AC circuit breaker panel near helm
- DC circuit breaker panel near helm
- AC power outlets (doubles) to staterooms, head, galley, engine room and lazarette with (RCD) protection
- Saloon and cabin lighting – 12v DC
- Lazarette lighting – 12v DC
- Engine room lighting – 12v DC
- Engine room blower fan – 12v DC
- Exhaust fan in head – 12v DC
- Search light – 12v DC
- Generator – Onan 6kw with remote stop/start electronic panel
- Navigation lights (international standard)
- BEP main switch panel
- AC 240v 15amp shore power inlet in cockpit
- Shore power lead – 15amp
- Air conditioning – 2 x 8,000 BTU reverse cycle for cabins – 16,000 BTU for saloon
- Auto Anchor Chain Counter

MAIN DECK

- FRP bow pulpit with twin stainless steel rollers
- Anchor – 55lb stainless steel anchor with 100m of 10mm galvanized anchor chain
- Anchor locker with access from hatches on deck
- Anchor winch – controlled from station with overload

protection circuit breaker, lift foot switch on foredeck and auto anchor chain counter to helm

- 2 round stainless steel port holes in cabin trunk with insect screens
- FRP coaming rail
- Bow rail welded stainless steel (highly polished) including flag staff and bow flag
- Non skid fibreglass fore deck
- Teak on cockpit aft deck and side decks forward to steps
- One boarding door in transom and one boarding door on starboard side bulwark
- Stainless steel fuel, fresh water and waste caps recessed into superstructure
- Cleats – stainless steel x 6
- Oversized swimming platform with teak decking
- Stainless steel swim ladder

GENERAL – ACCOMMODATION and INTERIOR

- Hand rubbed panelling and carpentry in all spaces
- Amtico interior flooring soles throughout except engine room and shower/head
- Soft vinyl removable panel headliners (cream colour)
- Interior finish varnish – gloss or semi gloss
- High quality door locks to saloon and cabin

SALOON/GALLEY

- Companionway steps with engine room access under
- Engine room access hatch in saloon floor with ladder
- Microwave/convection oven in galley
- Isotherm fridge/freezer
- Galley benchtop in Staron with double stainless steel sink and good quality faucet
- 2 element ceramic cooktop (AC) in galley bench top
- Galley storage – overhead cabinets with fittings for cups/plates/crockery and various drawers
- Saloon lounge – U shaped settee with Ultra Leather trim and teak hi-lo table
- L shaped sofa with small table
- Starboard side teak cabinet with 32" LED TV on electric lift
- AC outlets
- Galley exhaust fan – 12v DC
- Amtico sole
- Lighting – overhead down lights 12v DC
- Access sliding doors x 2 – aluminum side door and stainless steel back door
- Stainless hopper window



HUDSON BAY 450

MASTER STATEROOM - MIDSHIPS

- Amtico sole
- Island bed with 4 drawers fitted under
- Mattress – 6" thick
- Insect screens on all opening portholes
- Large portholes in hull sides
- Wardrobe – cedar lined with auto lighting (DC)
- Deck hatch – with screen
- AC outlets
- Reading lights – 2 x lights (one either side of bed)
- Main lighting – 12v DC overhead down lights
- Storage under berth

MASTER ENSUITE / HEAD

- All white FRP with acrylic mirrored ceiling
- Shower stall with hot/cold water to shower sump
- FRP floor with teak grating in shower
- Glass shower door
- Lighting – overhead down lights (12v DC)
- Insect screen on porthole
- Staron counter top with sink and faucet
- Mirror with light
- Toilet roll holder, towel holder/s and accessories
- Electric toilet with macerator pump – fresh and salt
- Three way "Y" valve for toilet discharge overboard or to holding tank
- Exhaust fan – 12v DC

FORWARD GUEST CABIN

- Amtico sole
- Hanging locker – cedar lined with automatic light (DC)
- AC outlets
- Porthole insect screens
- Double or two single beds (can convert to double)
- Reading lights – for each bed (12v DC)
- Main lighting – overhead down lights (12v DC)

FIRE FIGHTING EQUIPMENT

- Automatic/manual engine room fire fighting system by Sea Fire or Fireboy
- Three portable hand held extinguishers
- Fire blanket in Galley

MISCELLANEOUS

- Zinc anodes on rudders, propeller shafts, transom and trim tabs
- Propellers and shafts applied with 'Prop Speed' system
- Spliced mooring lines x 4
- Fenders with spliced lines x 3
- Safety equipment including EPIRB, life jackets, flares and V sheet
- Black boot stripe approx. 130mm with 25mm gap to black antifouling
- Antifouling – Jotun or International brand
- Owners manual

Clipper Motor Yachts Australia Pty Ltd reserves the right to alter prices and specifications subject to currency exchange rates. Please check with Clipper Motor Yachts Australia Pty Ltd to confirm current validity. Clipper Motor Yachts Australia Pty Ltd will not be liable "in contract or otherwise" for any loss resulting from the inaccuracy of any information contained in this document. Safety equipment – each state or Territory has different safety equipment standards it is important to ensure the requirements in your jurisdiction are met prior to the vessel being used. Appropriate deposits paid to Clipper Motor Yachts Australia Pty Ltd at time of order will establish firm pricing. [4819 5/2021]

** All prices quoted etc are ex Clipper Motor Yachts Australia office at Unit B1, Boat Works Dr. Coomera, Queensland, Australia.

**** Denotes tank capacity. For useable capacity do not rely on more than 90% of tank capacity. Actual useable capacity will vary according to boat trim and sea state.





SHOWROOM : Unit B1, Boat Works Dr. Coomera Qld 4209 // Pete Foster : 0452 262 877
CLIPPER MOTOR YACHTS : Brett Thurley : 0419 788 000 : brett@clippermotoryachts.com

CLIPPERMOTORYACHTS.COM